

MAP OFFICE COPY

N.E. 1/4 SEC. 27

N.W. CORNER OF N.W. 1/4 OF SEC. 26

WAYNE COUNTY 147086

TH 653

H 357

400.0 E. NISLEY

COUNTY LINE 755'-S. 90°W

1.474 AC. 209-813

8-618 RAT

LIZZIE HELMUTH 9.4189 ACRES.

S. 51°-15'-10" E 512.88'

S. 0°40' W. 321.00'

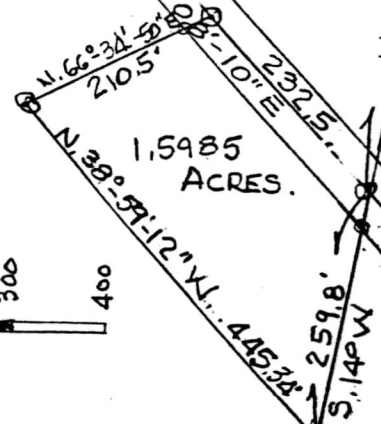
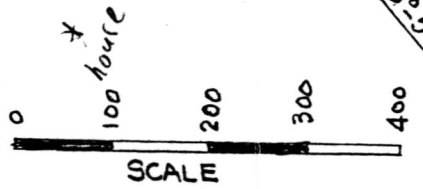
ALVIN R. & ANNA BEACHY

37.5086 ACRES REMAIN AFTER 3 EXCEPTIONS ON THIS PLAT.

LEGEND • IRON PINS FOUND ○ IRON PINS SET

LIZZIE HELMUTH Vol. 201, Pg. 614

PLAT OF A SURVEY OF A PART OF THE N.W. 1/4 OF SEC. 26, TWP. 15, RANGE 11, PAINT TOWNSHIP, HOLMES COUNTY, OHIO.

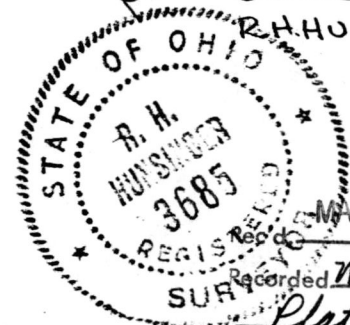


SCALE 1"=200'

SEPT. 20, 1984

R. H. HUNSINGER #3685, REGISTERED SURVEYOR REVISED APRIL 6, 1982

147086



MAY 22 1985

AT 2:54 O'CLOCK P.M.

Recorded May 23, 1985 Holmes Co. Ohio Fee: 5.00

Plat Vol. 10 Pg. 415 Recorder Richard Draven

Deed vol. 227-Pg. 362