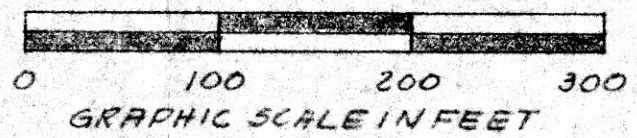
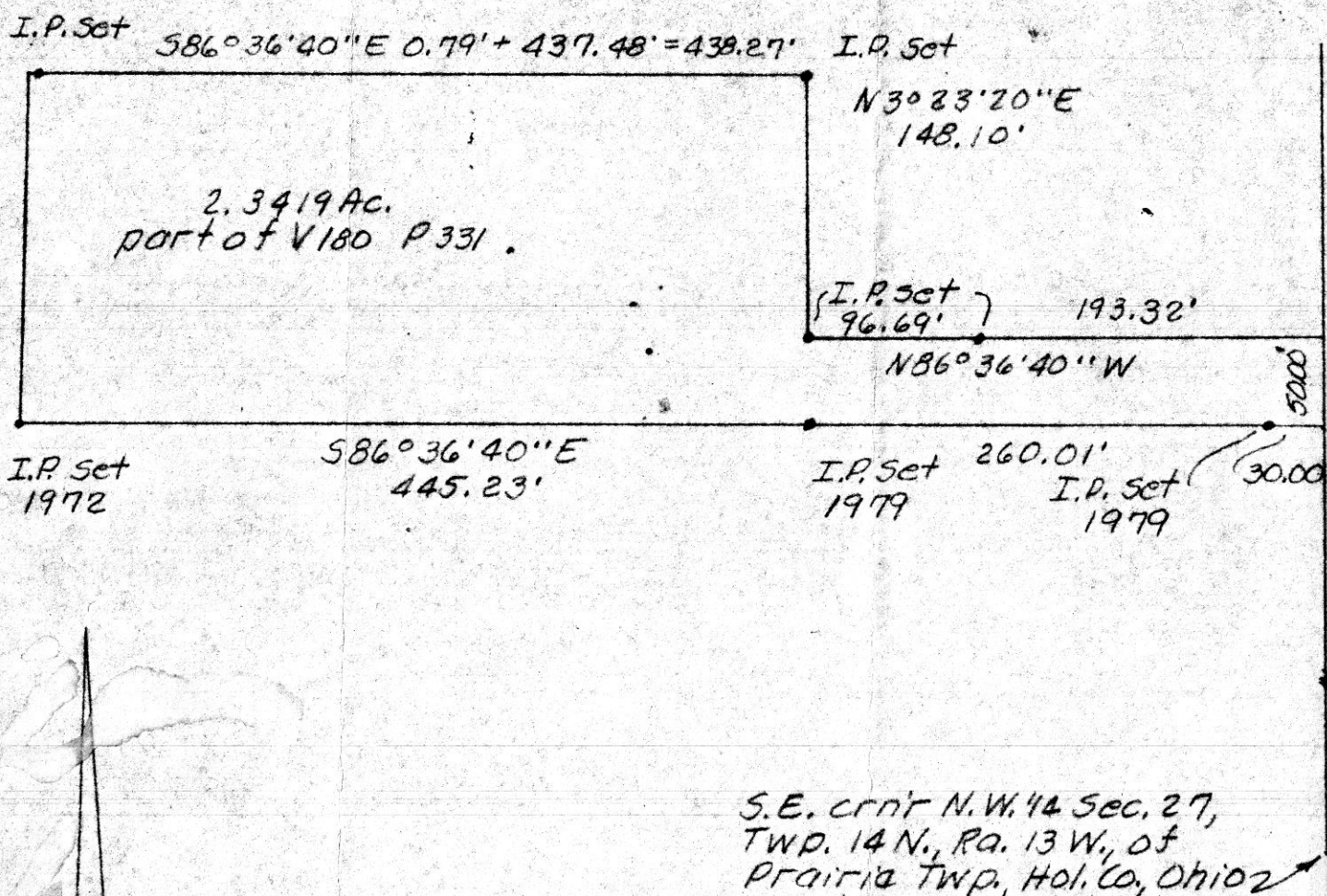


MAP OFFICE COPY

N 5° 24' 00" E 198.22'



S.E. crnr N.W. 14 Sec. 27,
Twp. 14 N., Ra. 13 W., of
Prairie Twp., Hol. Co., Ohio

Known as part of the N.W. 14
Sec. 27, Twp. 14 N., Ra. 13 W., of
Prairie Twp., Hol. Co., Ohio.

145307

Known as part of the N.W. 14 of Sec. 27, Twp. 14 N., Ra. 13 W.,
of Prairie Twp., Hol. Co., Ohio, and as part of V180 P331.

Beginning at a point in C.R. 245 on the East line of the
N.W. 14 of Sec. 27 North 3° 23' 20" East 452.11' from the S.E. crnr
thereof;

thence leaving said line and C.R. 245 North 86° 36' 40"
West 735.24' to an iron pin set in 1972 and passing iron pins
set in 1979 at 30.00' and 290.01';

thence North 5° 24' 00" E 198.22' to a point;
thence south 86° 36' 40" East 438.27' to set iron pin, and
passing a set iron pin at 0.79';

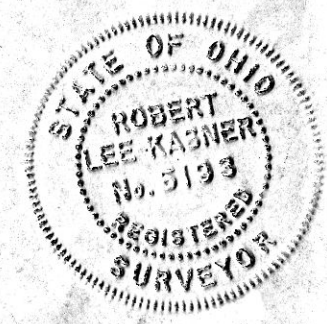
thence South 3° 23' 20" West 148.10' to a set iron pin;
thence South 86° 36' 40" East 290.01' to a point in C.R. 245
on the East line N.W. 14 and passing a set iron pin at 96.69';

thence with C.R. 245 and East line of N.W. 14 South
3° 23' 20" East 50.00' to the point of beginning and con-
taining 2.3419 acres, but subject to all legal highways.

Survey and description by Robert L. Kasner P.S. 5193

P.E. 28820
10/12/84

145307



Rec'd. DEC 10 1984 AT 3:11 O'CLOCK PM
Recorded Dec. 11, 1984 Holmes Co. Ohio Fee: 16.40
Plot Vol. 10 Pg. 348 Recorder Richard Dransfield
16 x 8 x 5 = Deed Vol. 225 - Pg. 692