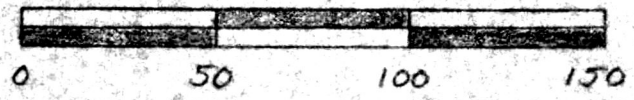
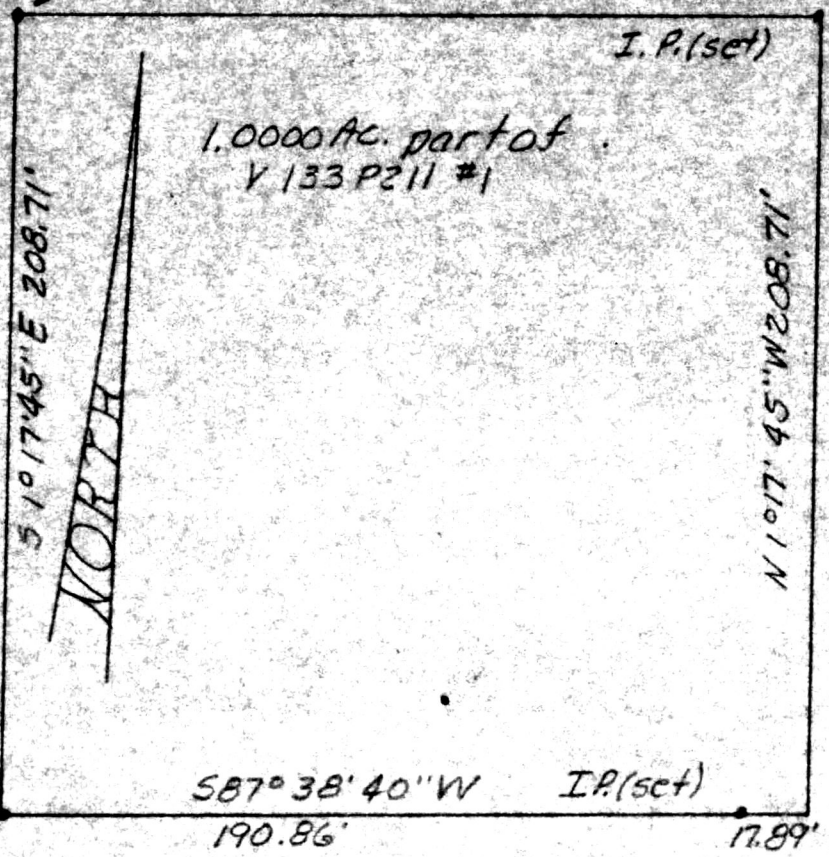


I. Pipe (Found) of N.W. crnr N.E. 1/4 Sec. 13, TWP. 17N, R. 14W
 Top bank, N87°38'40"E 208.75'

Known as part of the N.E. 1/4 of Sec. 13, Twp. 17N., R. 14 W., of Ripley Twp., Hol. Co., Ohio, and as part of V133 P211 #1.

Beginning at a found iron pipe at the N.W. crnr of the N.E. 1/4 of Sec. 13;
 thence with the North line of the N.E. 1/4 North 87°38'40" East 208.75' to a set iron pin;
 thence leaving said North line South 1°17'45" East 208.71' to a point;
 thence South 87°38'40" West 208.75' to a set iron pin in the East berm of T.R. 524 and passing a set iron pin on line at 17.89';
 thence with the West line of the N.E. 1/4 North 1°17'45" West 208.71' to the point of beginning and containing 1.000 acres, but subject to all legal highways.

Survey and description by Robert L. Kasner
 P.S. 5193
 P.E. 28820
 9/25/84



GRAPHIC SCALE IN FEET
 PLAT OF A SURVEY
 Known as part of the
 N.E. 1/4 of Sec. 13, Twp.
 17N., R. 14W., of
 Ripley Twp., Hol. Co., Ohio.

115108
 Recd NOV 20 1984
 AT 3:22 O'CLOCK P.M.
 RECORD November 26 1984
 Plot VOL 10 PG. 334
 Holmes Co. Ohio Fee: 5.00
 Richard Brown Recorder
 Deed Vol. 225-Pg. 528



MAP OFFICE COPY