

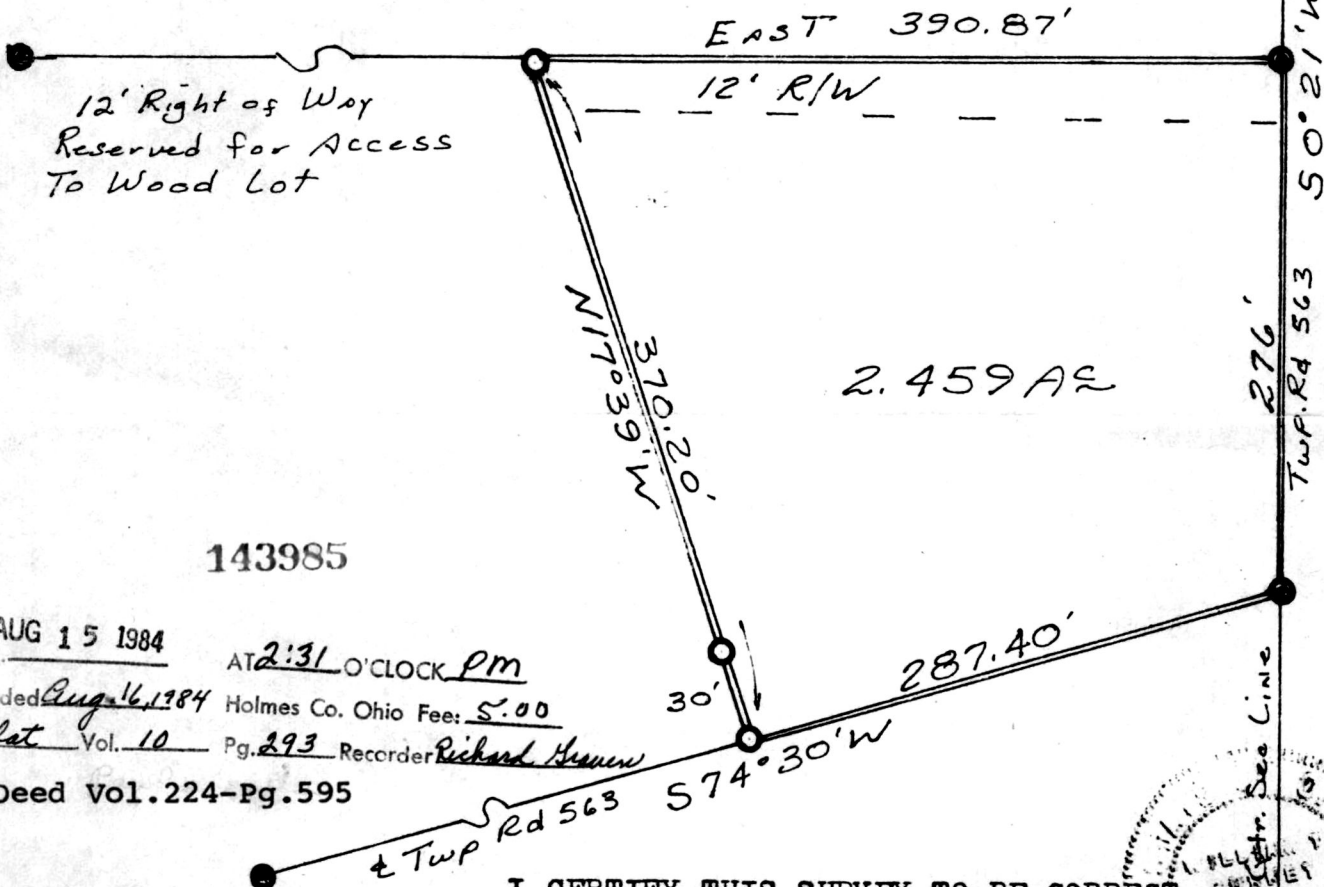
WM. TERRY BURKEY SURVEYING



WILLIAM C. YODER SURVEY
N. W. QUARTER SEC. 26
TOWNSHIP 14 RANGE 13
PRAIRIE TOWNSHIP
HOLMES COUNTY, OHIO
COMPLETED JULY 21, 1984

MAP OFFICE COPY

Wayne
Holmes 26 26
N.E. Cor.
N.W. Qtr.
Sec. 26
T-14 R-13
Prairie Twp
Holmes Co, Ohio
Spike in S.W. 27.10
30" Cherry Stump NE. 55.20'



143985

AUG 15 1984

AT 2:31 O'CLOCK PM

Recorded Aug 16, 1984 Holmes Co. Ohio Fee: 5.00

Plot Vol. 10 Pg. 293 Recorder Richard Hansen

Deed Vol. 224-Pg. 595

I CERTIFY THIS SURVEY TO BE CORRECT
TO THE BEST OF MY KNOWLEDGE

SIGNED

William T. Burkey

WILLIAM T. BURKEY, REG. SURVEYOR #5107
STATE OF OHIO

