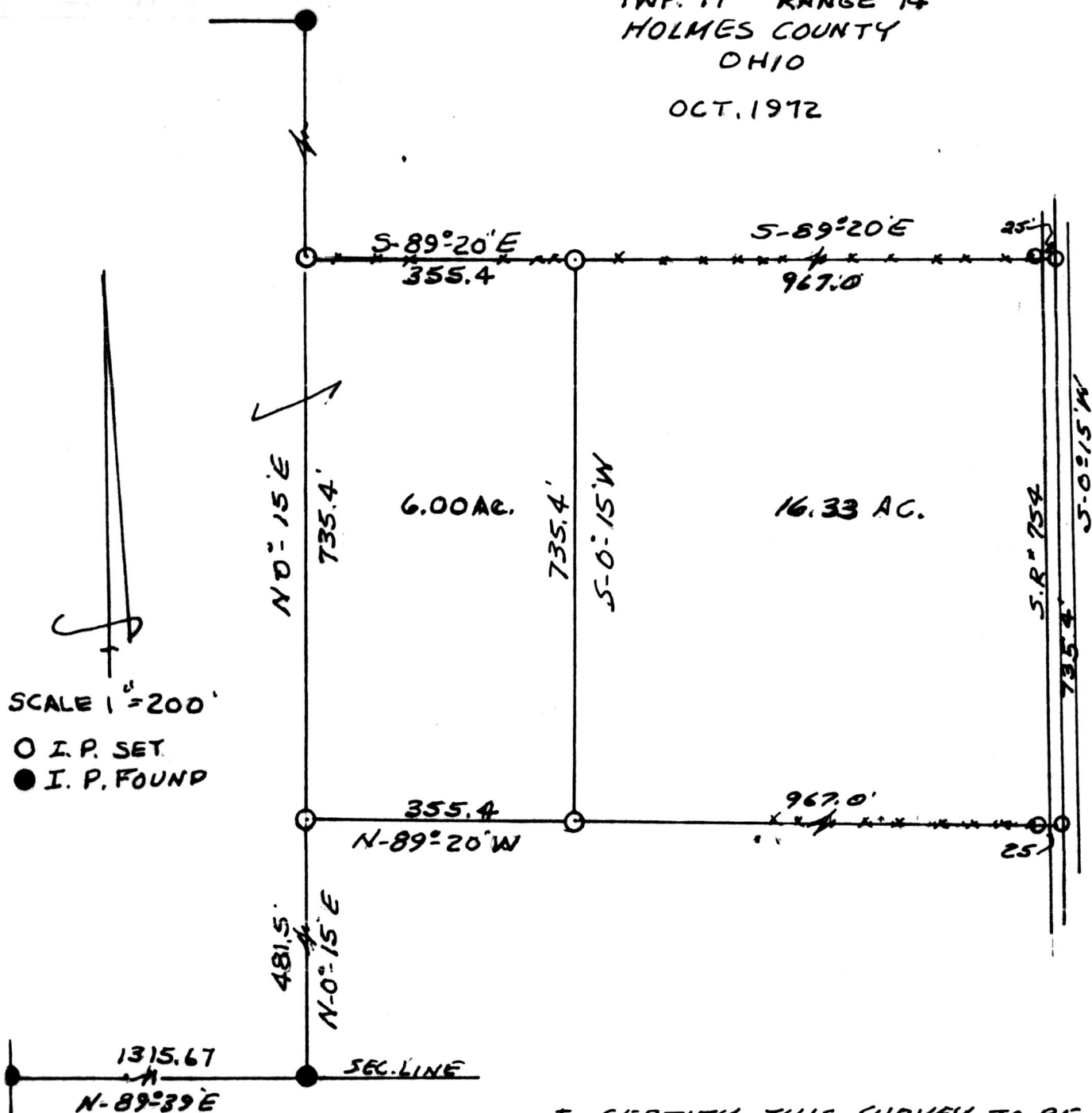


SURVEY FOR
HARRY FLEMING

VOL 10 PAGE 292

RIPLEY TOWNSHIP
S.W. QTR. SEC. 14
TWP. 17 RANGE 14
HOLMES COUNTY
OHIO

OCT. 1972



SCALE 1" = 200'

O I. P. SET
● I. P. FOUND

S.W. COR. 143973

S.W. QTR.

SEC. 14 REC'D. AUG 14 1984

AT 4:14 O'CLOCK P.M. CLYDE E. PURDY

RECORDED August 15, 1984

112T VOL 10 PG. 292

Holmes Co. Ohio Fees \$5.00

Richard Green Recorder

Deed Vol. 224 Page 580

I CERTIFY THIS SURVEY TO BE
CORRECT TO THE BEST OF MY KNOWLEDGE



MAP OFFICE COPY