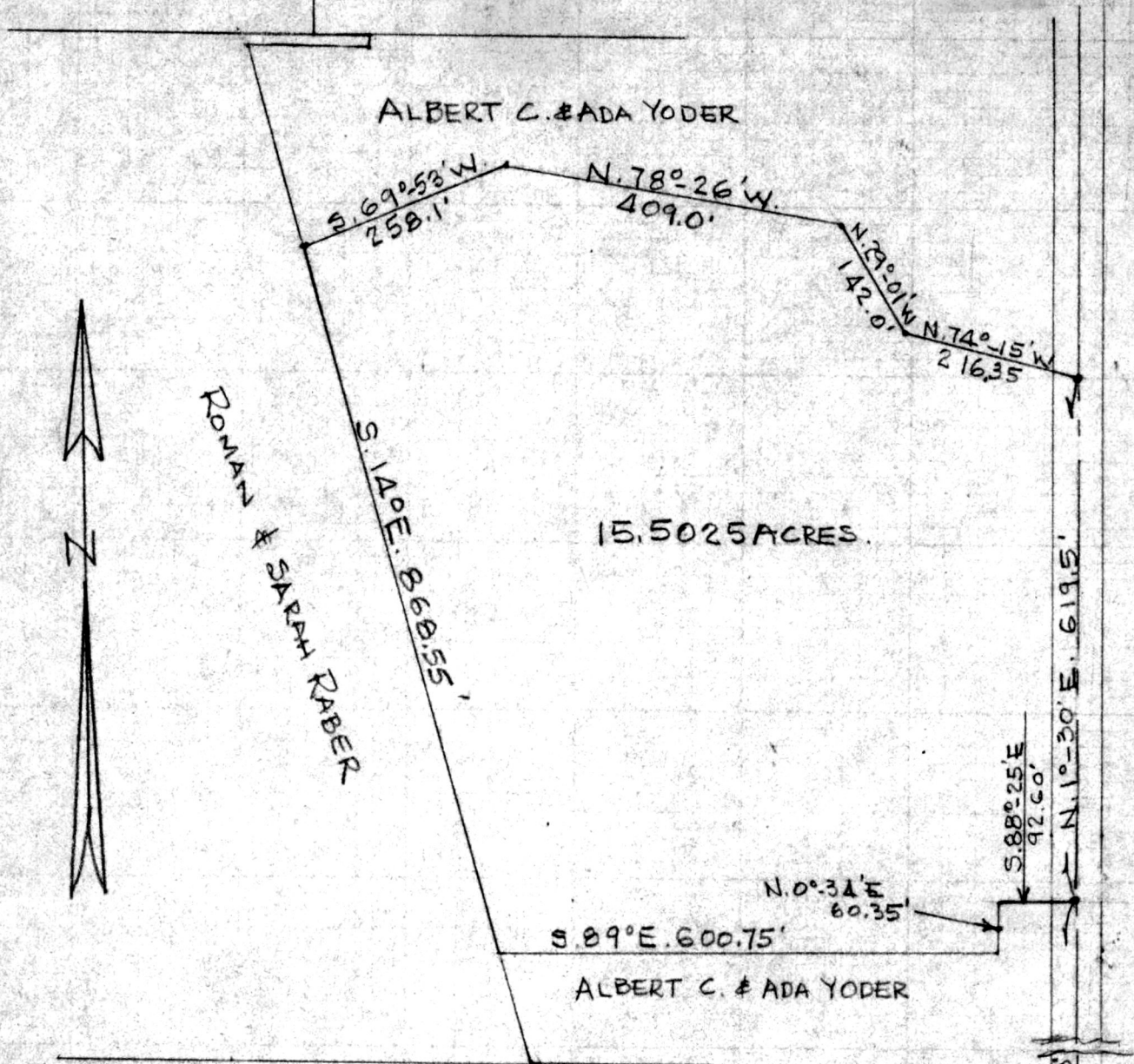


143778

SCHLABACH

RABER



143778

Rec'd. JUL 26 1984 AT 4:21 O'CLOCK PM
 Recorded July 27 1984 Holmes Co. Ohio Fee: 5.00
 Plat Vol. 10 Pg. 283 Recorder Richard Brown
 Deed Vol. 224 Pg. 401

PLAT SHOWING LANDS OF ROMAN SCHROCK
 EAST HALF OF NW 1/4 OF SEC. 13, TWP. 9, RANGE 5,
 WALNUT CREEK TOWNSHIP, HOLMES COUNTY, OHIO
 PLAT DRAWN FROM DATA TAKEN FROM SURVEYS
 MADE OF ADJACENT PROPERTY
 SCALE - 1" = 200'
 R.H. HUNSINGER, #3685, REGISTERED SURVEYOR

N.W. 1/4 SEC. 13



MAP OFFICE COPY