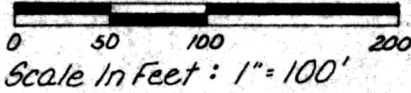


RIPLEY TOWNSHIP  
 HOLMES COUNTY, OHIO  
 SOUTHWEST QUARTER, SECTION 33, T-18N, R-14W

137687

Murray  
 Parker

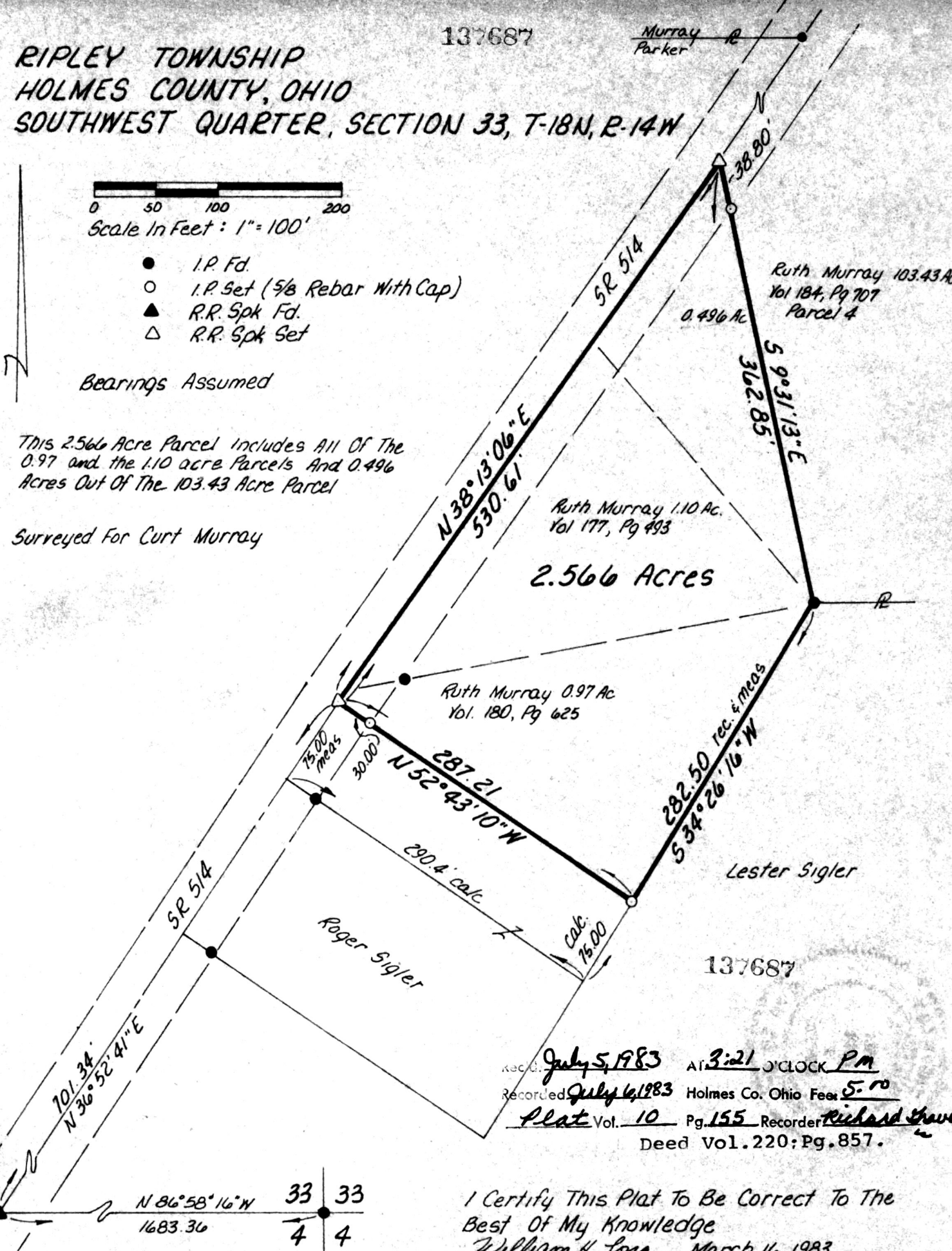


- I.P. Fd.
- I.P. Set (5/8 Rebar With Cap)
- ▲ R.R. Spk Fd.
- △ R.R. Spk Set

Bearings Assumed

This 2.566 Acre Parcel Includes All Of The  
 0.97 and the 1.10 acre Parcels And 0.496  
 Acres Out Of The 103.43 Acre Parcel

Surveyed For Curt Murray



2.566 Acres

REC'D. July 5, 1983 AT 3:21 O'CLOCK PM  
 Recorded July 6, 1983 Holmes Co. Ohio Fees 5.<sup>00</sup>  
Plat Vol. 10 Pg. 155 Recorder Richard Thayer  
 Deed Vol. 220: Pg. 857.

I Certify This Plat To Be Correct To The  
 Best Of My Knowledge  
William H. Long March 16, 1983  
 William H. Long R.S 6505  
 RD 1 Box 69A  
 Big Prairie, Ohio. 44611

**MAP OFFICE COPY**