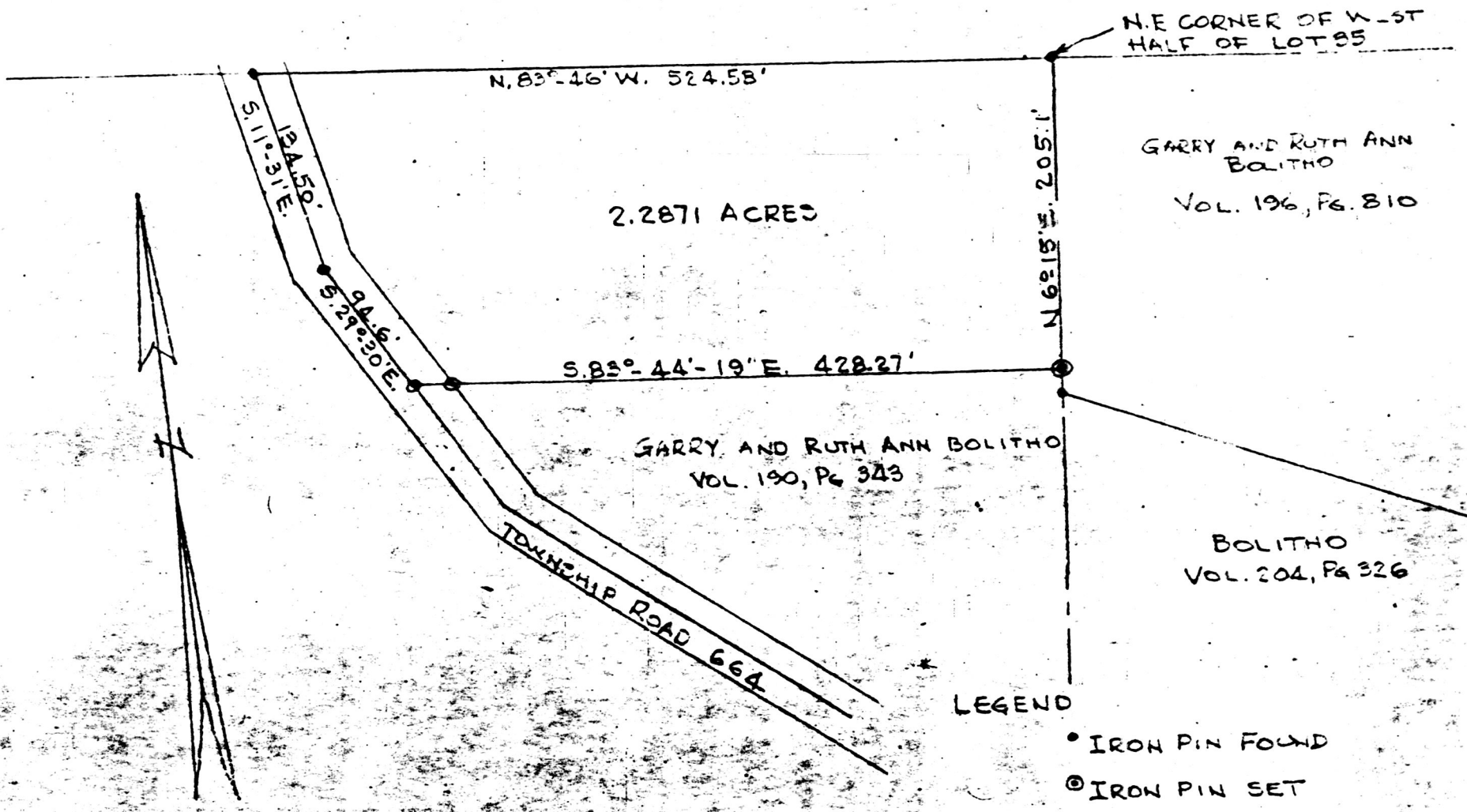


137597

L - 20



N.E CORNER OF W-1ST HALF OF LOT 35

2.2871 ACRES

GARRY AND RUTH ANN BOLITHO  
VOL. 196, Pg. 810

S. 83°-44'-19" E. 428.27'

GARRY AND RUTH ANN BOLITHO  
VOL. 190, Pg. 343

BOLITHO  
VOL. 204, Pg. 326

TOWNSHIP ROAD 664

LEGEND

- IRON PIN FOUND
- ⊙ IRON PIN SET

137597

PLAT OF A SURVEY OF A PART OF THE WEST  
 HALF OF LOT 35, THIRD QUARTER, TOWNSHIP 10,  
 RANGE 4, PAINT TOWNSHIP, HOLMES COUNTY, OHIO  
 FOR GARRY AND RUTH ANN BOLITHO - 2.2871 AC. PARCEL  
 SCALE 1"=100'  
 MAY 28, 1983



Rec'd. June 27, 1983 AT 4:08 O'CLOCK PM  
 Recorded June 28, 1983 Holmes Co. Ohio Fees 5.00  
 Plat Vol. 10 Pg. 153 Recorder Richard  
Graven

R. H. HUNSINGER, #3685, REGISTERED SURVEYOR

MAP OFFICE COPY

Deed Vol. 220; Pg. 812  
Mtg. Vol. 137; Pg. 763.