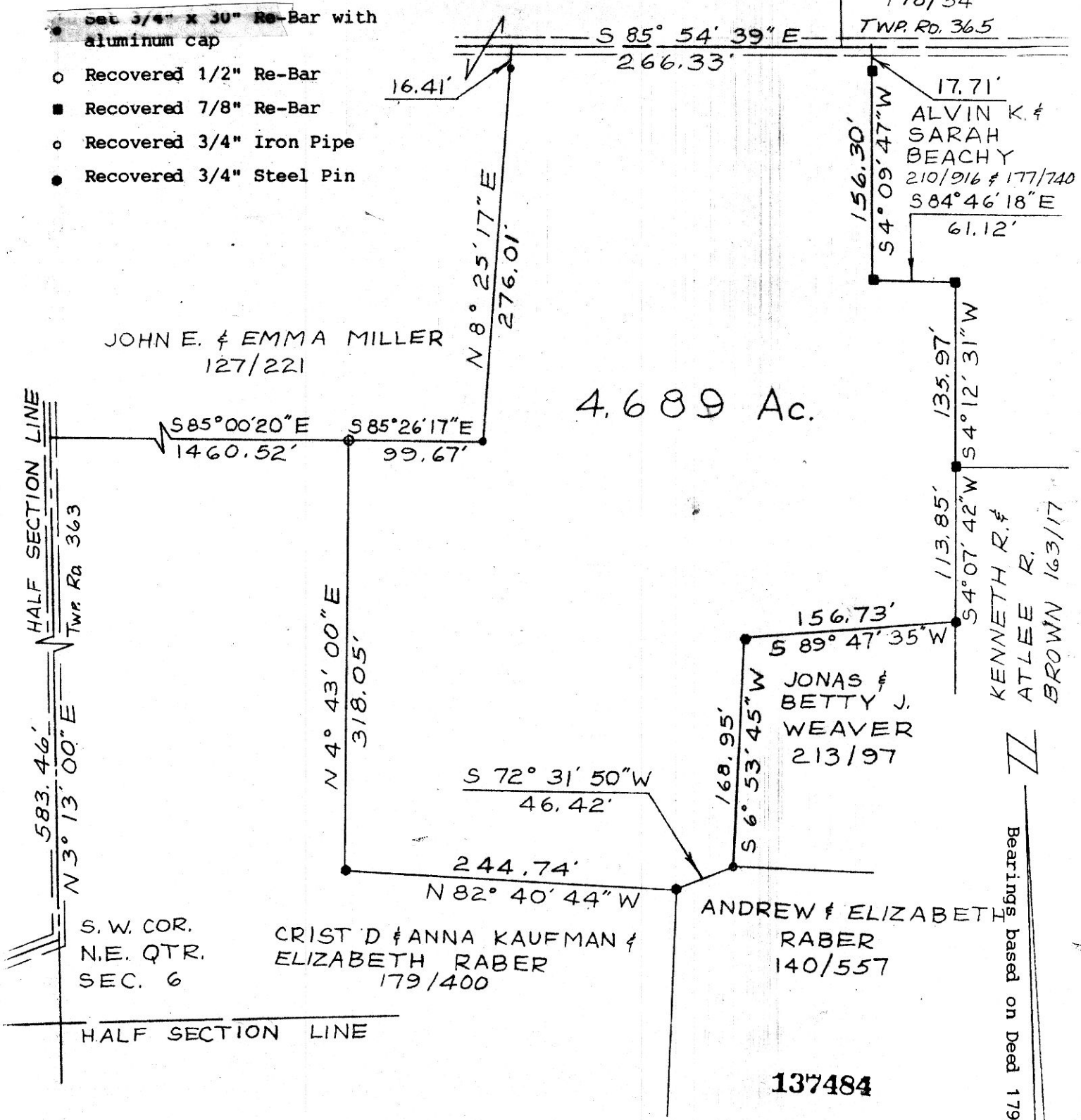


NANCY & PETER
DAUWALDER
178/54
TWP. RD. 365

- Set 3/4" x 30" Re-Bar with aluminum cap
- Recovered 1/2" Re-Bar
- Recovered 7/8" Re-Bar
- Recovered 3/4" Iron Pipe
- Recovered 3/4" Steel Pin



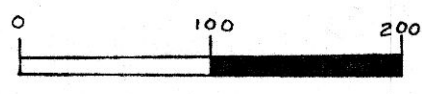
Note: The following documents were used as sources of data for this survey:

Deeds:	178/54	213/97
	210/916	140/557
	177/740	179/400
	163/17	127/221

Plat of a Tract of Land
For
John E. Miller
In
Section 6
Range 5W, Township 9N
Berlin Township
Holmes County
Ohio

REC'D. June 15, 1983
AT 8:57 o'clock a.m.
RECORDED June 15, 1983
Plat VOL 10 PG 150
Holmes Co. Ohio Fee: 5.00
Richard Owen Recorder

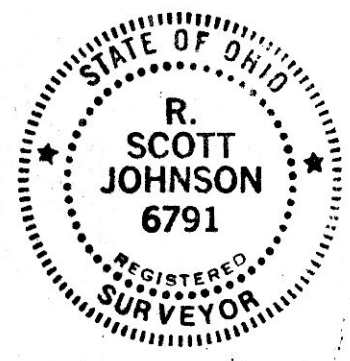
Scale 1" = 100' August 27, 1982



APPROVED BY
TAX MAP OFFICE

Date June 15, 1983

R. Scott Johnson
R. Scott Johnson, Reg. Surveyor #6791



MAP OFFICE COPY