

137177

S-87°02'07"E

1481.32'

N-1°44'14"E

367.17

557.37
N-71°36'00"W

N-41°50'43"E

111.31

S-47°38'09"E

451.77

22.186 AC.

793.96
S-0°49'24"W

PRAIRIE TOWNSHIP
N.W. & NE. QTR. SEC. 9
TWP. 13N RANGE 13 W
HOLMES COUNTY

OHIO
SEPT. 1978

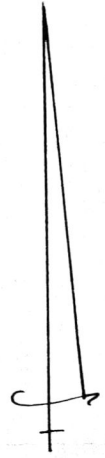
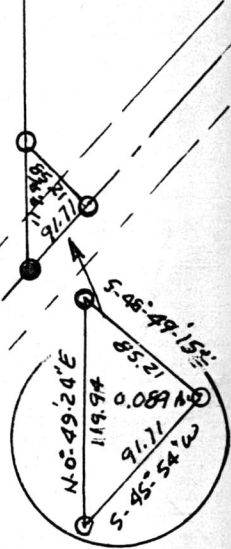
2.802 AC.

832.60
N-40°06'00"W

S-31°34'49"E

464.49

236.60
S-45°54"W



N-87°28'44"W

N-87°28'44"W

36.02

87.94

34.40

337.24'

9 | 9

9 | 9

C.R. #320

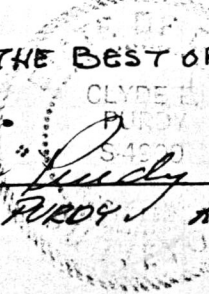
137177

I CERTIFY THIS SURVEY TO BE
CORRECT TO THE BEST OF MY
KNOWLEDGE.

SCALE 1"=200'

- I.P. SET
- I.P. FOUND

Clyde E. Fordy
CLYDE E. FORDY AS 4900



Rec'd. May 24, 1983 AT 3:46 O'CLOCK PM
Recorded May 25, 1983 Holmes Co. Ohio Fee: 5.00
Plat Vol. 10 Pg. 137 Recorder Richard Traven