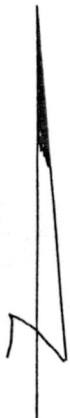


WASHINGTON TOWNSHIP  
HOLMES COUNTY OHIO  
SE QTR., SEC. 26, T-20-N, R-15-W

26 | 25  
26 | 25

Lakeville Development, Inc.



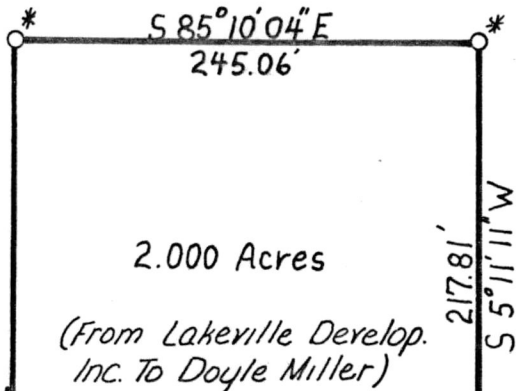
Scale 1"=100'

- I.P. fd.
- I.P. Set

Note: I.P.'s Marked With Asterisk Will Be Set This Fall After Corn Is Picked.

W.H.J.

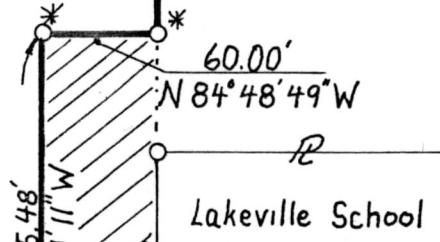
Hatched Area Denotes A 60 Foot Easement From Lakeville Development Inc. To Doyle Miller For Ingress & Egress



2.000 Acres

(From Lakeville Develop. Inc. To Doyle Miller)

1254.30'  
S 5°11'11"E



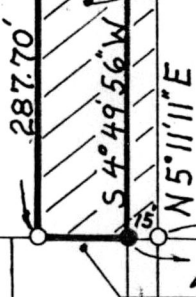
Lakeville School

Hilltop Rubber Inc.

Doyle Miller

.291 Acres

From Doyle Miller To Lakeville Development Inc.



137082

48

47

46

Village Of Lakeville

I Certify This Plat To Be Correct To The Best Of My Knowledge

William H Long Aug 4, 1981

William H Long R.S. 6505 Date

Rec'd. May 18, 1983 AT 2:30 O'CLOCK PM

Recorded May 19, 1983 Holmes Co. Ohio Fee: 5.00

Plat Vol. 10 Pg. 135 Recorder Richard Haven

Deed Vol. 220; Pg. 404, & 406.

MAP OFFICE COPY