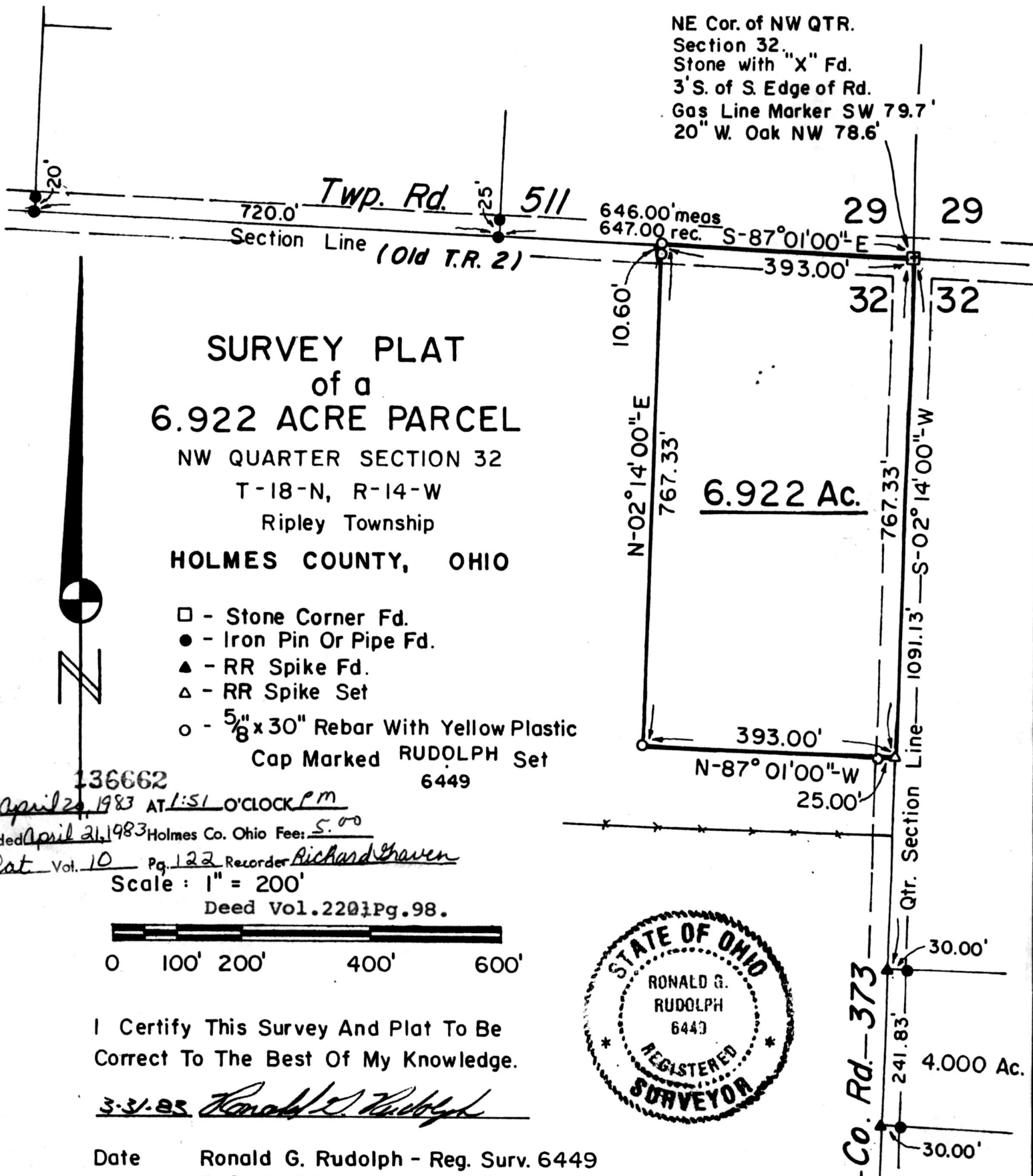


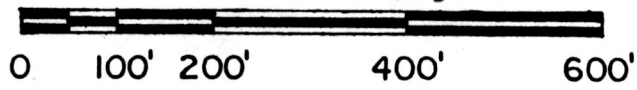
NE Cor. of NW QTR.
Section 32.
Stone with "X" Fd.
3' S. of S. Edge of Rd.
Gas Line Marker SW 79.7'
20" W. Oak NW 78.6'



SURVEY PLAT
of a
6.922 ACRE PARCEL
NW QUARTER SECTION 32
T-18-N, R-14-W
Ripley Township
HOLMES COUNTY, OHIO

- - Stone Corner Fd.
- - Iron Pin Or Pipe Fd.
- ▲ - RR Spike Fd.
- △ - RR Spike Set
- - 5/8" x 30" Rebar With Yellow Plastic Cap Marked RUDOLPH Set 6449

136662
Rec'd. April 29, 1983 AT 1:51 O'CLOCK P.M.
Recorded April 21, 1983 Holmes Co. Ohio Fee: 5.00
Plat Vol. 10 Pg. 122 Recorder Richard Chaven
Scale: 1" = 200'
Deed Vol. 220 Pg. 98.



I Certify This Survey And Plat To Be Correct To The Best Of My Knowledge.

3-31-83 *Ronald G. Rudolph*

Date Ronald G. Rudolph - Reg. Surv. 6449
R. G. RUDOLPH SURVEYING Inc
405 W. Liberty St.
Wooster, Ohio 44691



MAP OFFICE COPY