

136650

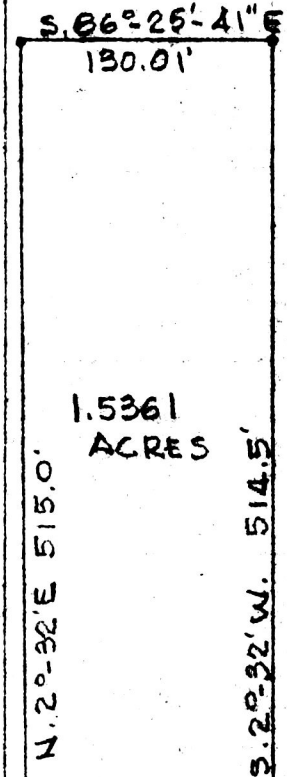
ENOS L. AND
CLARA MILLER
VOL. 219, PG. 398

ENOS L. AND
CLARA MILLER
VOL. 154, PG. 414

136650

Rec'd. April 20, 1983 AT 9:37 O'CLOCK AM
Recorded April 20, 1983 Holmes Co. Ohio Fee: 5.00
Plat Vol. 10 Pg. 121 Recorder Richard
Craven

Deed Vol. 220; Pg. 87.



1.5361
ACRES

COUNTY HIGHWAY 186

S. 86°-39'E. 861.0'

N. 86°-59'W. 130'

COUNTY HIGHWAY 200

MAP OFFICE COPY



PLAT OF A SURVEY OF A PART OF THE S.E. 1/4
 OF SEC. 27, TWP. 15, RANGE 11, PAINT TOWNSHIP,
 HOLMES COUNTY OHIO FOR ENOS L AND CLARA
 MILLER (1.5361 ACRE PARCEL)
 SCALE- 1"=100' MARCH 25, 1983
 R.H. HUNSINGER, #3685, REGISTERED SURVEYOR