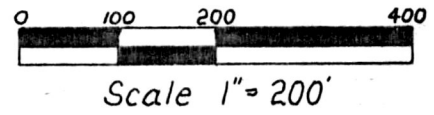
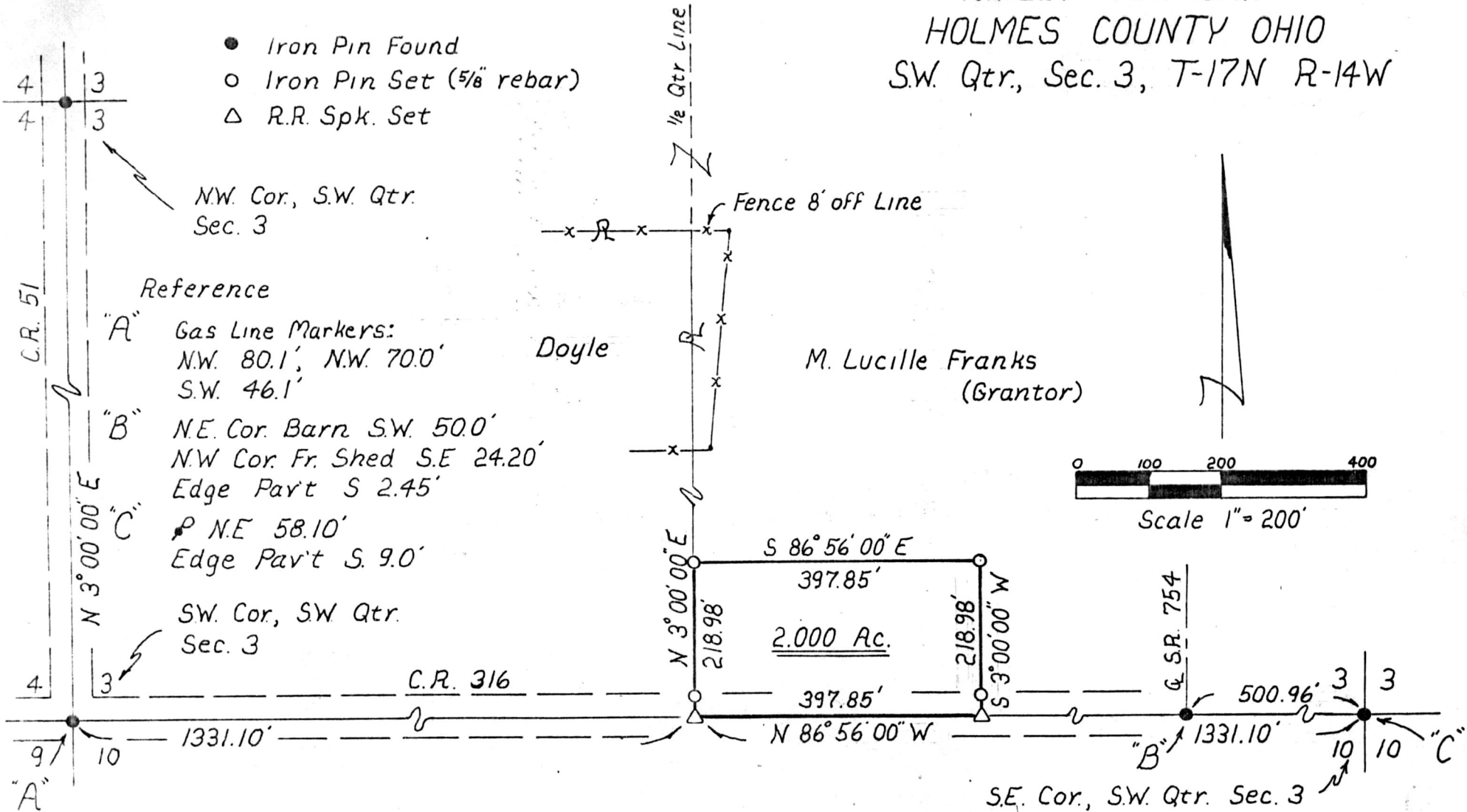


135930

RIPLEY TOWNSHIP
HOLMES COUNTY OHIO
SW. Qtr., Sec. 3, T-17N R-14W

- Iron Pin Found
- Iron Pin Set (5/8" rebar)
- △ R.R. Spk. Set



135930

I Certify This Plat To be Correct
To The Best of my Knowledge.

William H Long May 20, 1982
William H. Long R.S. 6505

Reference:
Plat Vol. 8 Pg. 220

Recorded Feb. 22, 1983 AT 11:31 O'CLOCK AM Bearings Assumed
 Holmes Co. Ohio Fee: 2.00
 Plat Vol. 10 Pg. 99 Recorder Richard Thaven
 Deed Vol. 219; Pg. 592.

MAP OFFICE COPY

VOL 10 PAGE 99