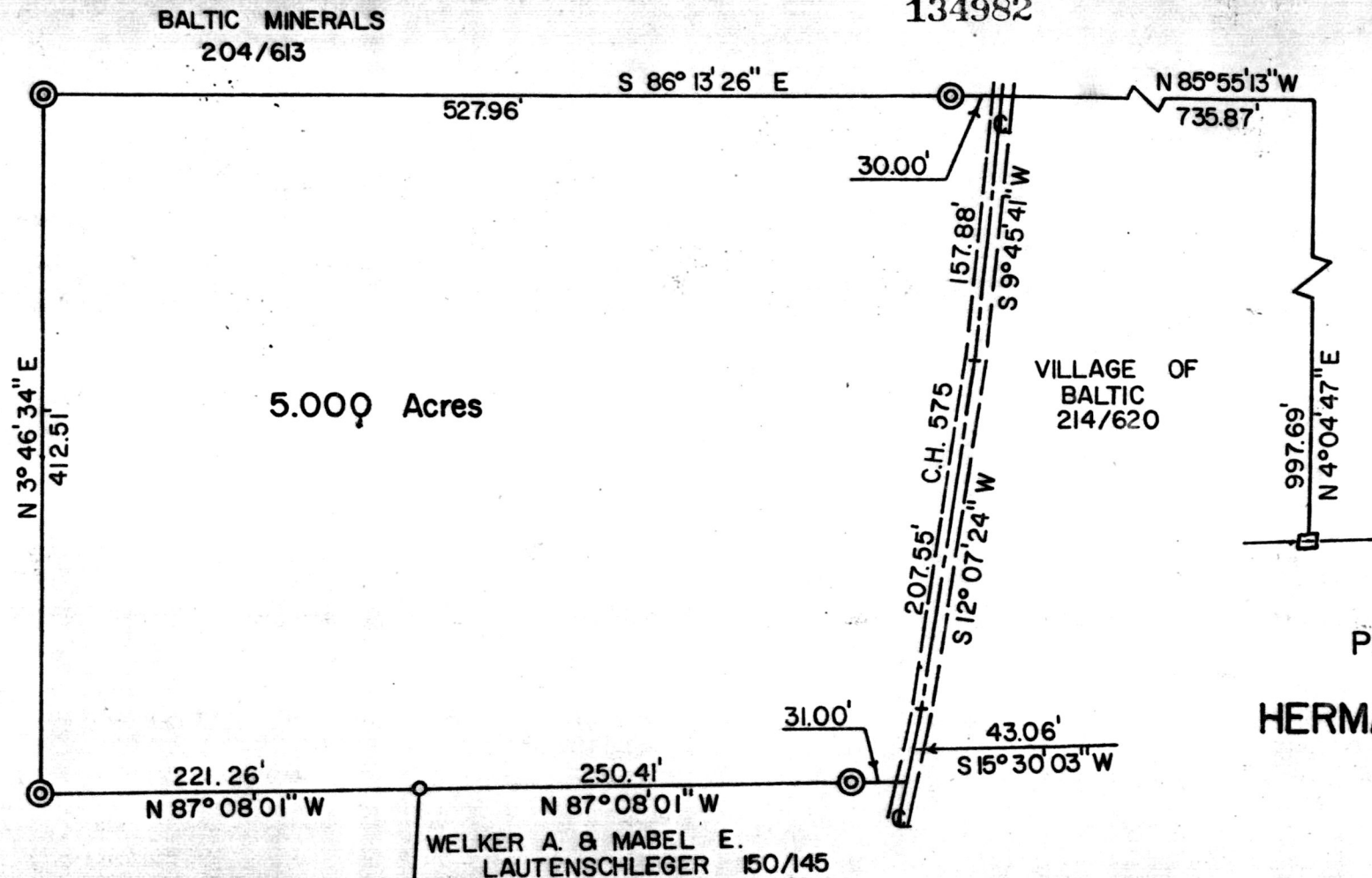


MAP OFFICE COPY

BEARINGS BASED ON DEED 214/620



SOURCES OF DATA:
DEEDS: 204/613
214/620
150/145

PLAT OF A TRACT OF LAND
FOR
HERMANSON CONSTRUCTION CO.
IN
SECTION 25
RANGE 4W
TOWNSHIP 8N
VILLAGE OF BALTIC
CLARK TOWNSHIP
HOLMES COUNTY
OHIO

SCALE ÷ 1" = 100' NOV. 18, 1982

134982

- LEGEND**
- ⊙ SET 4" x 30" CONCRETE MONUMENT WITH ALUMINUM CAP
 - RECOVERED 1/2" STEEL PIN
 - STONE RECOVERED AT SE. CORNER OF S.W. QTR. OF SEC. 25



Rec'd. Dec. 9, 1982 AT 11:10 O'CLOCK AM
Recorded Dec. 9, 1982 Holmes Co. Ohio Fee: 2.00
Plat Vol. 10 Pg. 79 Recorder Richard Orman
Deed Vol. 218 Pg. 973

GEORGE W. STEWART, REG. SURVEYOR No. 6357