

26 25

26 25

Granite stone with "X" on Top Fd.

S-88°-53'-48"-E
1704.25'

25 25

25 25

Stone with "X" Fd.
40" R. Oak NW. 6'
16" Maple N. 12'
Fence Cor. Post SW 3'

SURVEY PLAT

SW QUARTER SECTION 25

T-14-N , R-13-W

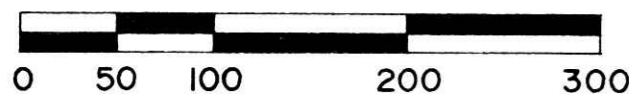
PRAIRIE TOWNSHIP

HOLMES COUNTY

OHIO



Scale: 1" = 100'



- - Stone Corner Found
- - Iron Pipe Found
- △ - 5/8 Rebar with Yellow Plastic Cap Found Marked Rudolph Fd. 6449
- - 5/8 Rebar with Yellow Plastic Cap Marked Rudolph Set 6449

REFERENCES

- Plat Vol. 6 pg. 87
- Deed Vol. 171 pg. 431
- Deed Vol. 187 pg. 240
- Deed Vol. 192 pg. 681
- Deed Vol. 218 pg. 561



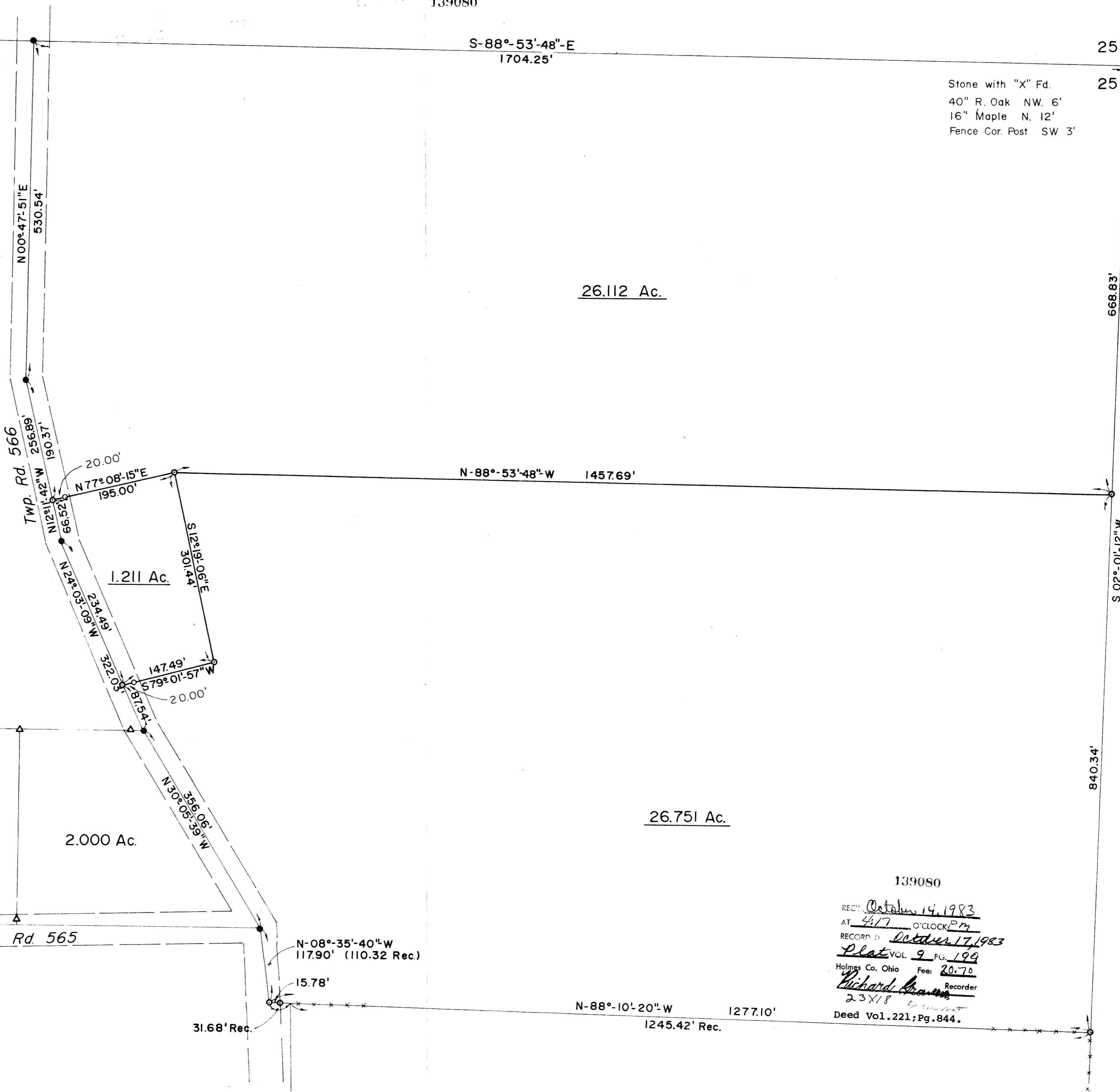
I Certify This Survey And Plat To Be Correct To The Best Of My Knowledge.

9-27-83 *Ronald G. Rudolph*

Date Ronald G. Rudolph Reg Surv 6449
R. G. RUDOLPH SURVEYING, Inc.
405 W. Liberty St.
Wooster, Ohio 44691

Job No. 1208

G.C.M.



139080

REC'D October 14, 1983

AT 4:17 O'CLOCK PM

RECORD IN October 17, 1983

Plat VOL. 9 PG. 199

Holmes Co. Ohio Fee: 20.70

Richard Brown Recorder

23X18

Deed Vol. 221, Pg. 844.