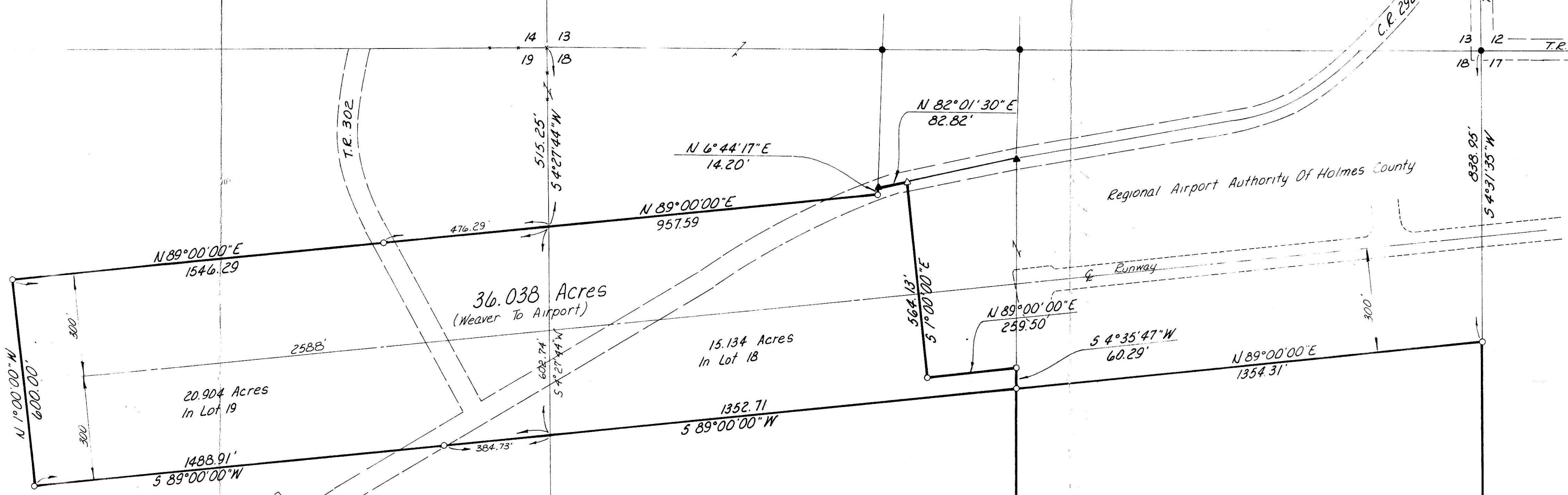


HARDY TOWNSHIP
HOLMES COUNTY, OHIO
LOTS 18 & 19, THIRD QTR., T-9N, R-7W

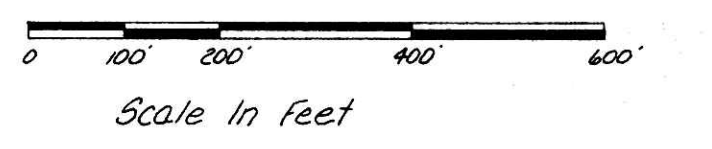
15 14
20 19

14 13
19 18

13 12
18 17



Ralph E. & Phyllis I. Weaver



- I.P. Fd.
- I.P. Set (3/8" Rebar w/ Cap)
- ▲ R.R. Sph. Fd.
- △ R.R. Sph. Set

20 19
25 24

19 18
24 23

18 17
23 22

138626

REC'D September 15, 1983
AT 10:41 O'CLOCK a.m.
RECORDED September 15, 1983
PLAT VOL 9 PG. 196
Holmes Co. Ohio Fee: 72 Fee - County
Richard Orin Recorder Office

Deed Vol. 221; Pgs. 537, 541, 545.

I Certify This Survey To Be Correct To The Best Of My Knowledge.
William H. Long
William H. Long R.S. 6505 October 19, 1982
20*1 Box 69A
Big Prairie, Ohio 44111



MAP OFFICE COPY