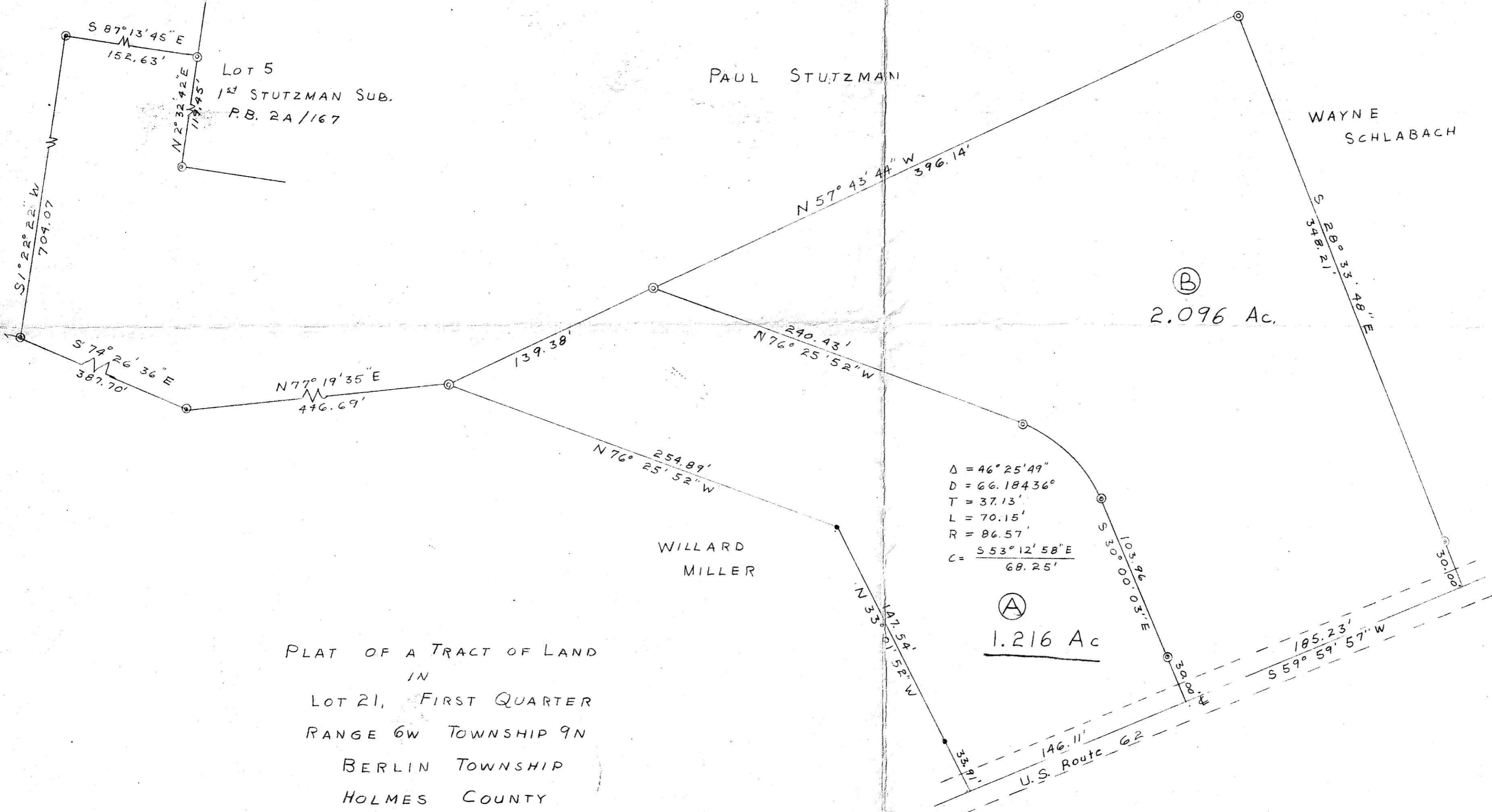


138141

REC'D August 11<sup>th</sup>, 1983  
AT 3:56 O'CLOCK P.M.  
RECORDED August 12, 1983  
Plat VOL 9 PG. 189  
Holmes Co. Ohio Fee: 16.50  
Richard Brown Recorder  
15X 22X5  
Deed Vol 221 Pg. 225



PLAT OF A TRACT OF LAND  
IN  
LOT 21, FIRST QUARTER  
RANGE 6W TOWNSHIP 9N  
BERLIN TOWNSHIP  
HOLMES COUNTY  
OHIO

SCALE: 1" = 50' JUNE 13, 1978

$\Delta = 46^{\circ} 25' 49''$   
 $D = 66.18436'$   
 $T = 37.13'$   
 $L = 70.15'$   
 $R = 86.57'$   
 $C = \frac{553^{\circ} 12' 58'' E}{68.25'}$

(A)  
1.216 Ac

(B)  
2.096 Ac.

⊙ = Concrete Monument  
• = Steel Pin



MAP OFFICE COPY

*George W. Stewart*

Reg. Surveyor # 6357