

136511

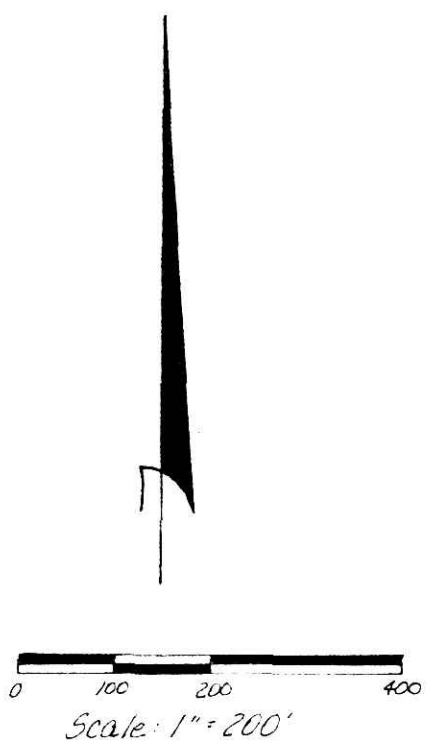
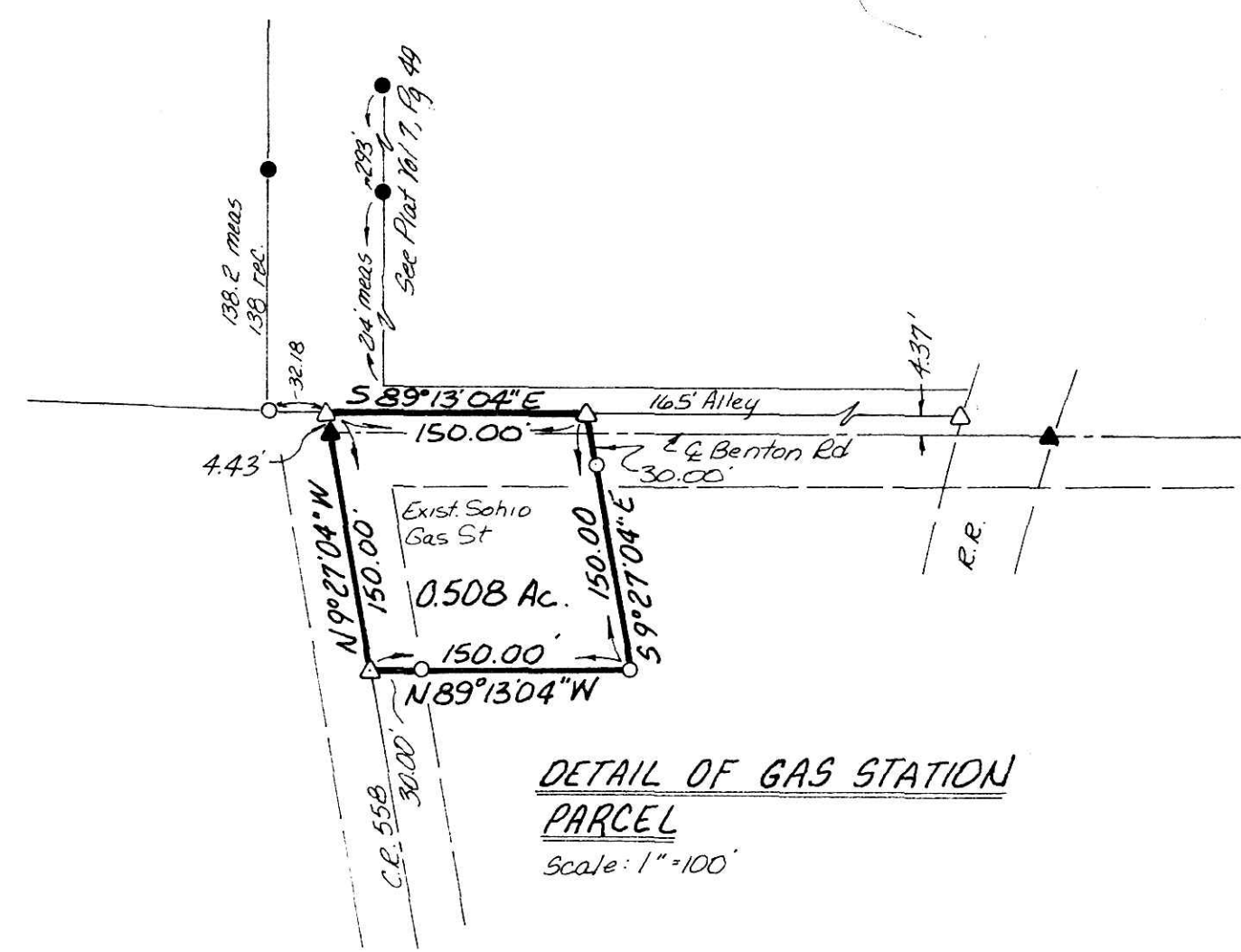
PRAIRIE TOWNSHIP
HOLMES COUNTY, OHIO
SECTION 3, T-13N, R-13W

Notes: Bearings Derived From State Hwy. Plans

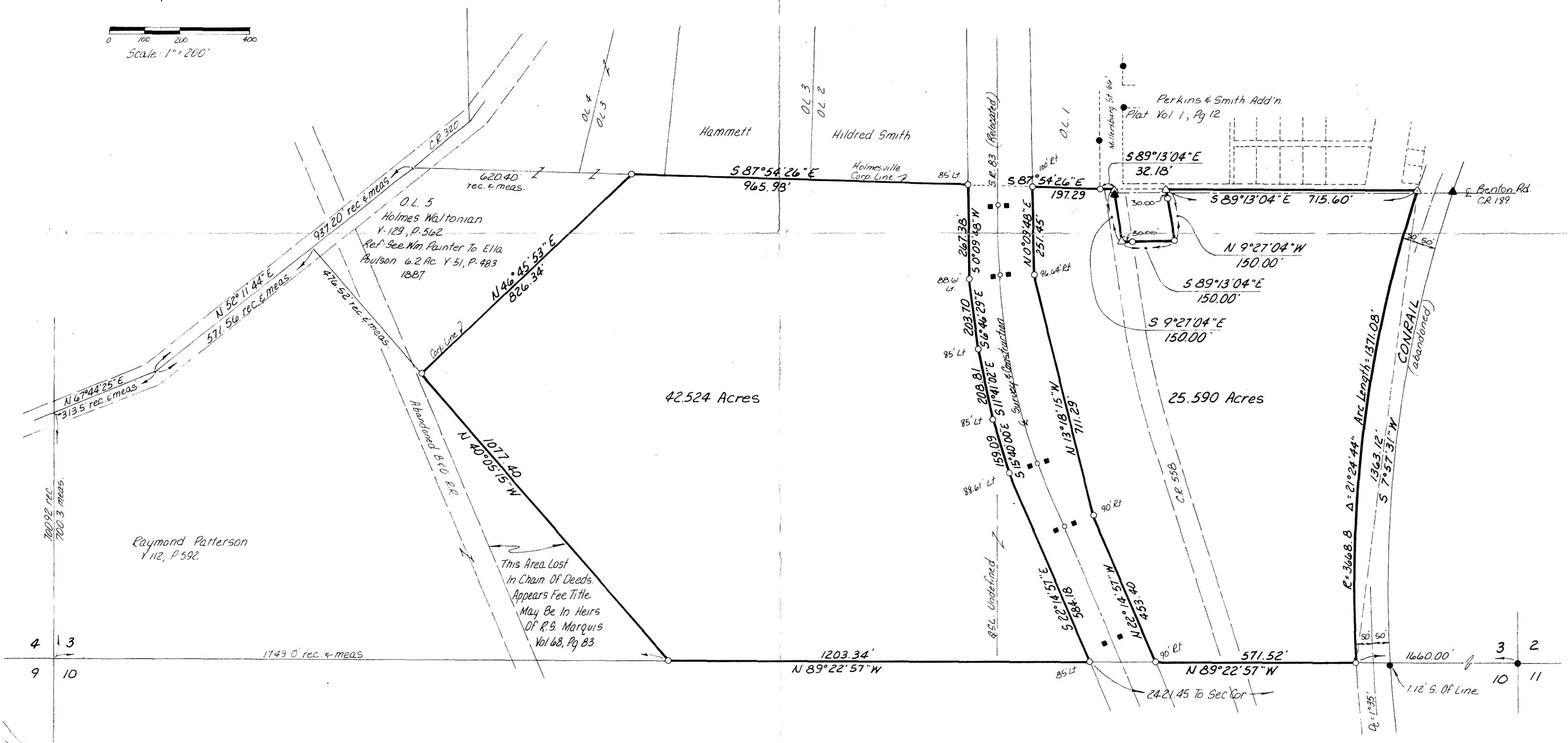
State Hwy. Monuments & R/W Locations As Per Plans Except Pins On N. R. & Section Line Since My Definition Of Those Lines Is Different. Also Hwy Mon @ 45+00 Rt. is 0.5' Off Plan Location.

South Line Of Sec. 3 Was Determined By The I.P. Fd. On East End, State Hwy Station @ Sec. Line And Rec. Dist To C.R. 320 On West End. These Lined Up Well

- References: Plat Vol 1, Pg 12 (Holmesville)
7, Pg 4
Lease Vol 1, Pg 130 (Grantor)
Pg 399
Lease Vol 50, Pg 71 (Schoio)
Plat Vol 6, Pg 44 (S.R. 83)
S. R. Plans
Deed Vol 212, Pg 378
215, Pg 538 (Conrail & Prop. East)
78, Pg 62 (Conrail)
153, Pg 561 (Hammett)



- I.P. Fd.
- P Set 5/8" Rebar w/ Cap
- ▲ RL Set Fd
- △ E.A. Fd
- State Hwy Monument Fd.



I Certify This Survey To Be Correct To The Best Of My Knowledge
William H. Long Date Feb. 17, 1993
William H. Long RS 6505
RD 1 Box 674
Big Prairie, Ohio 44611

136511

Rec'd April 11, 1993 AT 3:22 O'CLOCK P.M.
Recorded April 12, 1993 Holmes Co. Ohio Fee: 22.80
Plat Vol. 9 Pg. 173 Recorder Richard Craven
24 x 19 Deed Vol. 220; Pgs. 7, 11, & 13.

MAP OFFICE COPY