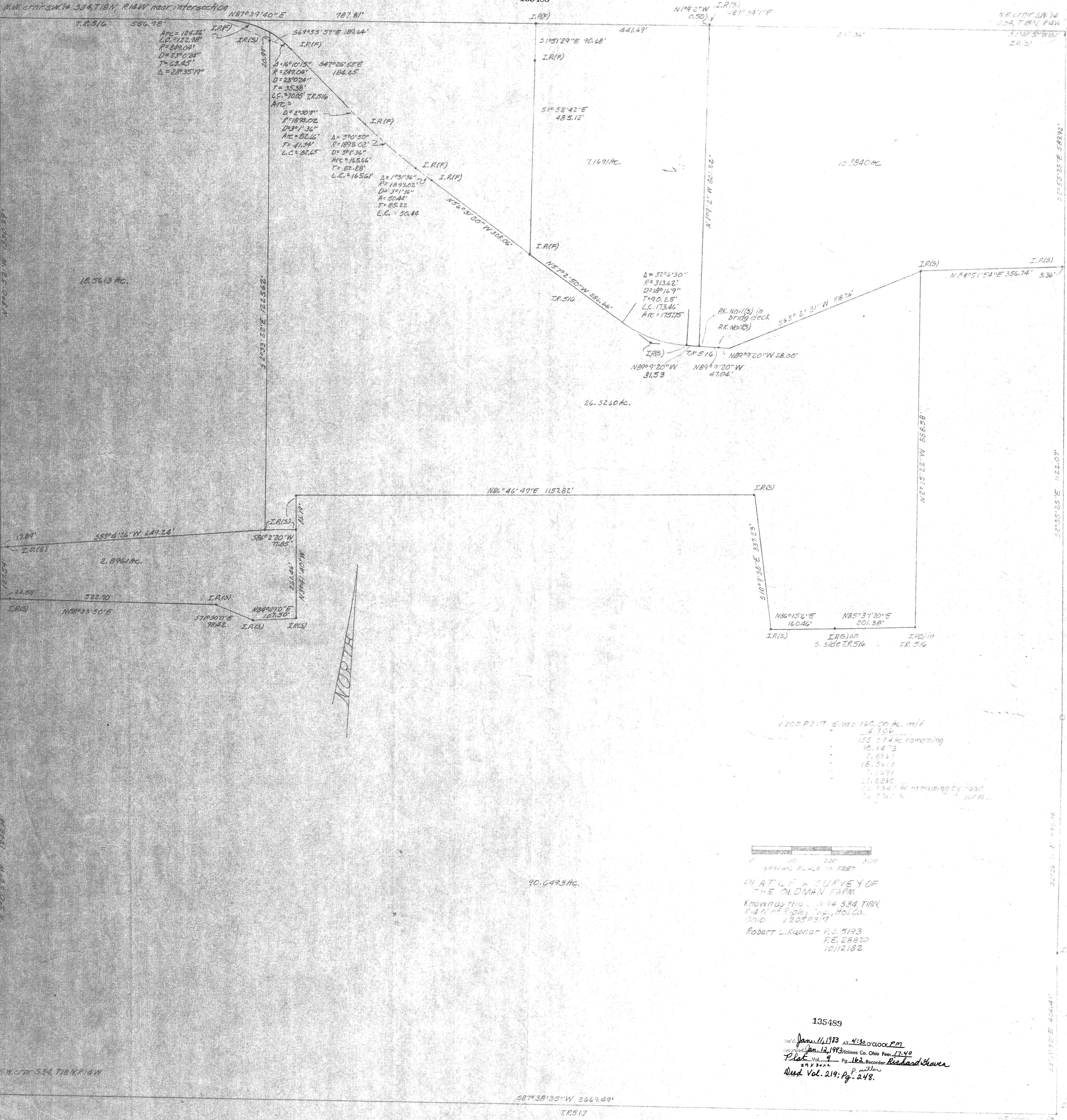


135489



1205 P 317 5745 160.00 AC. m/f  
 - 4.706  
 - 155.294 AC remaining  
 - 10.1473  
 - 2.8141  
 - 18.5413  
 - 7.1691  
 - 17.8246  
 - 21.7347 AC remaining by "land  
 - 26.762 AC

GRAPHIC SCALE IN FEET  
 0 100 200 300

PLAT OF A SURVEY OF  
 THE OLOMAN FARM  
 Known as Tract No. 14 534 T18N,  
 R14 W of Eopley Twp., Holm Co.,  
 Ohio. 1205 P 317  
 Robert L. Kasner P.S. 5193  
 R.E. 28820  
 10112182

135489

Jan. 11, 1913 AT 4:30 O'CLOCK P.M.  
 Jan. 12, 1913 Holmes Co. Ohio Fees 17.40  
 Plat. Vol. 9 - Pg. 162 Recorder Richard Haven  
 29 x 30 x P. Miller  
 Recd. Vol. 219, Pg. 248.

587°38'35"W 2669.49'  
 TR517