

Job No. 873

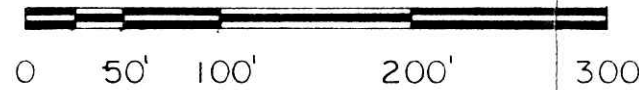
134038

SURVEY of a 3.422 ACRE PARCEL

PART OF LOT 27, 4th QUARTER
T-10-N, R-5-W
Paint Township
HOLMES COUNTY, OHIO

- - Iron Pipe Fd
- ▲ - RR Spike Fd.
- - 5/8" Rebar With Yellow Plastic Cap
Marked RUDOLPH Fd.
6449
- △ - PK Nail Set
- - 5/8" x 30" Rebar With Yellow Plastic
Cap Marked RUDOLPH Set
6449

Scale: 1" = 100'



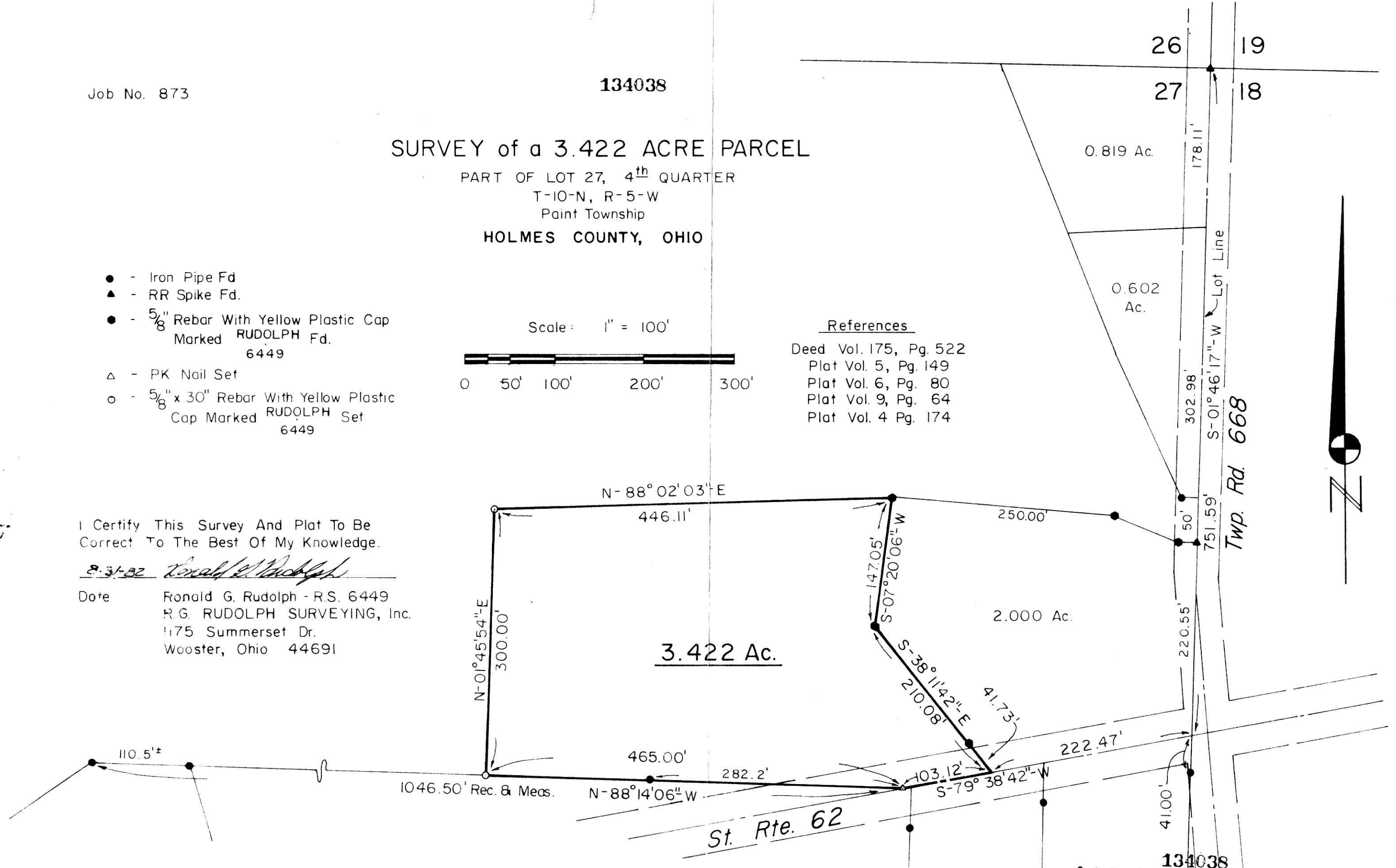
References

Deed Vol. 175, Pg. 522
 Plat Vol. 5, Pg. 149
 Plat Vol. 6, Pg. 80
 Plat Vol. 9, Pg. 64
 Plat Vol. 4 Pg. 174

I Certify This Survey And Plat To Be Correct To The Best Of My Knowledge.

8-31-82 *Ronald G. Rudolph*

Date Ronald G. Rudolph - R.S. 6449
 R.G. RUDOLPH SURVEYING, Inc.
 1175 Summerset Dr.
 Wooster, Ohio 44691



MAP OFFICE COPY

134038
 Rec'd. Oct. 12, 1982 AT 2:19 O'CLOCK P.M.
 Recorded Oct. 13, 1982 Holmes Co. Ohio Fee, 3.55
 Plat Vol. 9 Pg. 141 Recorder Richard Haven
 Deed Vol. 218; Pg. 454, 456