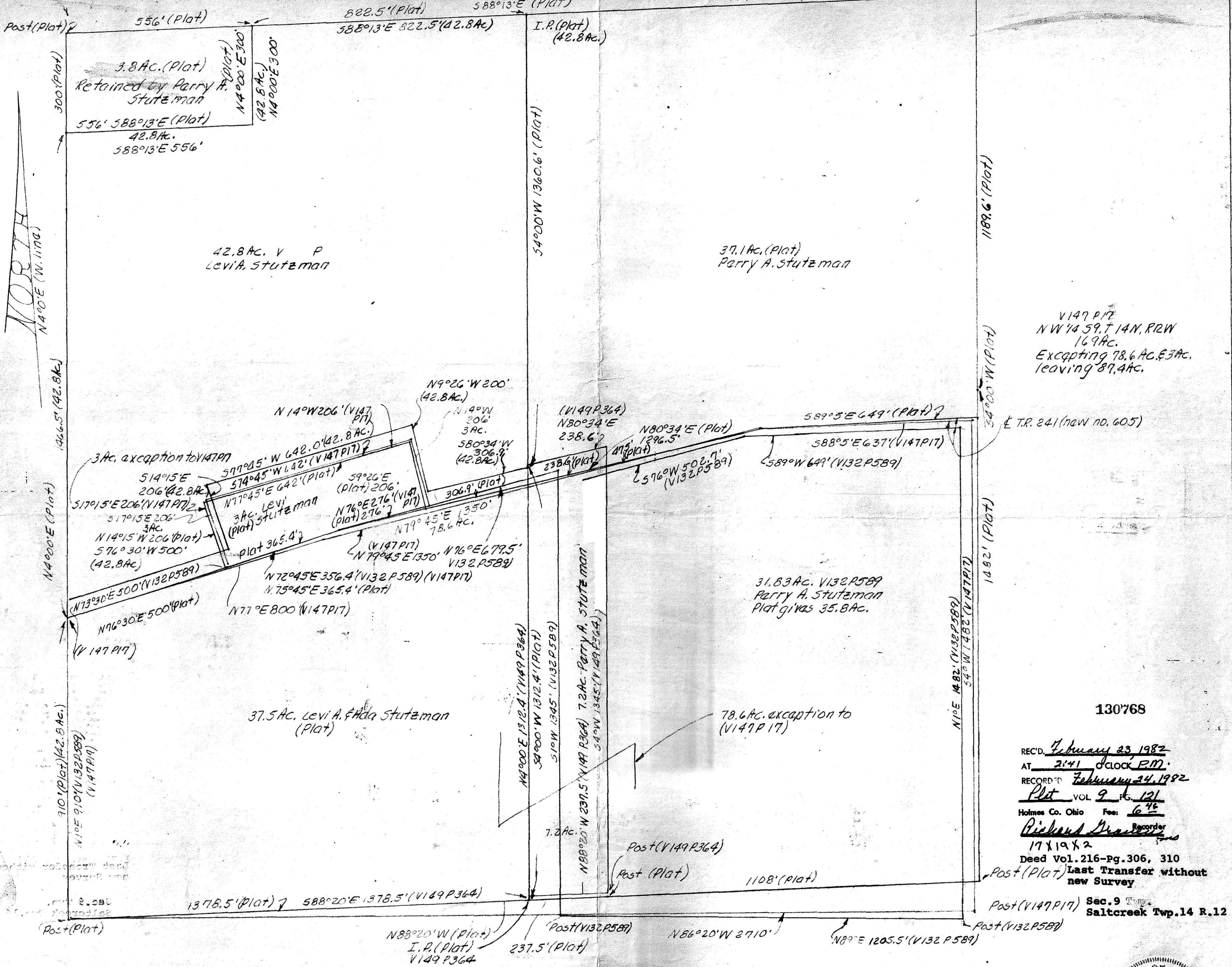


N.W. 1/4 NW 14 39, T 14 N, R 12 W



V147 P17
 NW 1/4 39, T 14 N, R 12 W
 169 Ac.
 Excepting 78.6 Ac. & 3 Ac.
 leaving 89.4 Ac.

E.T.R. 241 (now no. 605)

31.83 Ac. V132P589
 Parry A. Stutzman
 Plat gives 35.8 Ac.

37.5 Ac. Levi A. & Ada Stutzman
 (Plot)

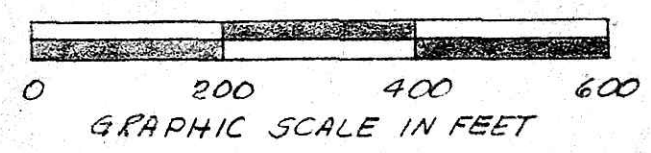
78.6 Ac. exception to
 (V147P17)

130768

REC'D February 23, 1982
 AT 2:41 o'clock P.M.
 RECORD'D February 24, 1982
 Plat VOL 9 Pg. 121
 Holmes Co. Ohio Fee: 6.45

Richard [Signature]
 Recorder
 1781982
 Deed Vol. 216-Pg. 306, 310
 Last Transfer without
 new Survey

Sec. 9 Twp.
 Saltcreek Twp. 14 R. 12



Note: This plat is not the
 results of a survey by the
 person signed author.

1"=200 Perry A. Stutzman
 12/30/81 R.L.K. P.S. 5193
 P.E. 28920

