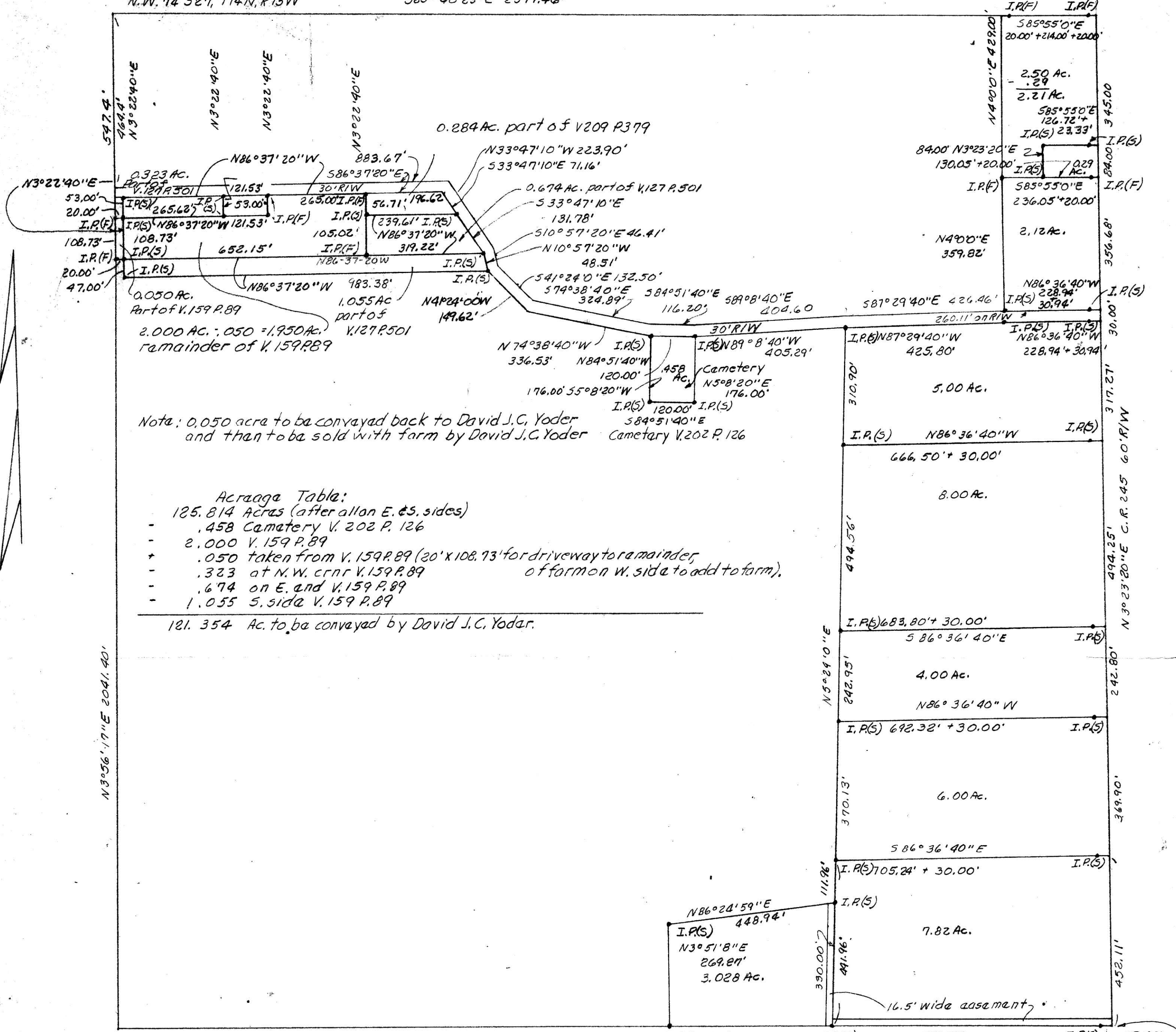


Post at N.W. CRNR
N.W. 1/4 52E, T14N, R13W

585° 40' 23" E 2397.46'



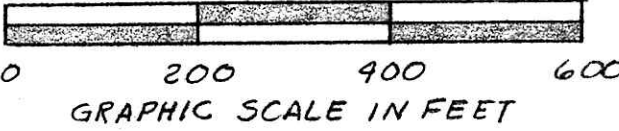
Note: 0.050 acre to be conveyed back to David J.C. Yoder and then to be sold with farm by David J.C. Yoder

- Acraaga Table:**
- 125.814 Acres (after allan E. & S. sides)
 - .458 Cemetery V. 202 P. 126
 - 2.000 V. 159 P. 89
 - .050 taken from V. 159 P. 89 (20' x 108.73' for driveway to remainder of farm on W. side to add to farm),
 - .323 at N.W. CRNR V. 159 P. 89
 - .674 on E. and V. 159 P. 89
 - 1.055 S. side V. 159 P. 89

121.354 Ac. to be conveyed by David J.C. Yoder.

Post at S.W. CRNR 1481.07'
N.W. 1/4 52E, T14N
R13W

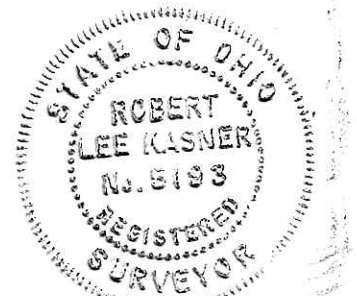
585° 49' 0" E I.P.(S) 436.25' IR(S) 723.73' I.P.(S) 27.40'
ctr 52E, T14N, R13W



127351

REC'D. July 24th 1981
 AT 8:50 O'CLOCK A.M.
 RECORDED July 24, 1981
 Plot VOL. 9 PG. 104
 Holmes Co. Ohio Fee: 6.46
Richard Stroud Recorder
 17X19X2
 Deed Vol. 213-Pg. 721

PLAT OF A SURVEY FOR
 DAVID J.C. YODER
 Grantor
 KNOWN as part of N.W. 1/4 52E,
 T14N, R13W, of PRAIRIE TWP,
 HOLMES CO., OHIO.
 Robert L. Kasner, P.S. 5193
 P.E. 28820



104