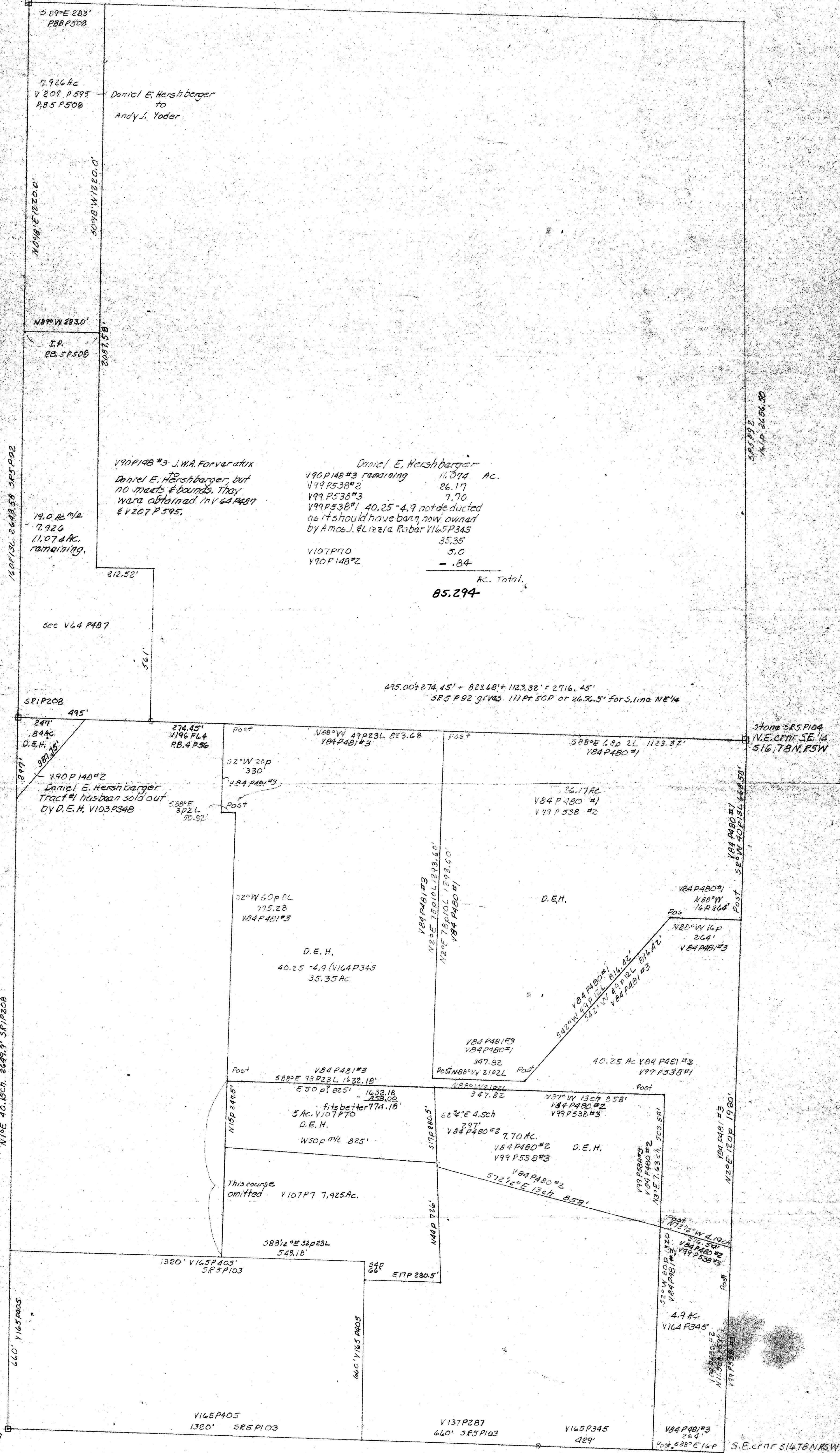


Stone SR5 P92, P88 P508
NW corner NE 1/4
S16 T8N R5W

40.00 ch. SR5 P236

90P 1485' SR5 P 92

P88 P508 SR5 P92
I.P. 71P15L 1181.4



Daniel E. Hershberger
to
Andy J. Yoder

V90P148 #3 J.W.A. Forver et ux
to
Daniel E. Hershberger, but
no meats & bounds. They
were obtained in V64 P487
& V207 P 595.

Daniel E. Hershberger
V90P148 #3 remaining 11.074 Ac.
V99P538 #2 26.17
V99P538 #3 7.70
V99P538 #1 40.25 - 4.9 not deducted
as it should have been, now owned
by Amos J. & Lizea Robar V165P345 35.35
V107P70 5.0
V90P148 #2 -.84

Ac. Total.
85.294

495.00 + 274.45' + 823.68' + 1123.32' = 2716.45'
SR5 P92 gives 111P 50P or 2636.5' for S. line NE 1/4

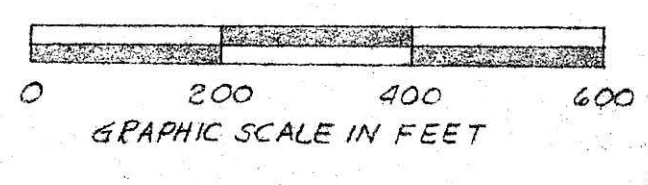
SR5 P92
161P 2656.50

Stone SR5 P104
N.E. CORNER SE 1/4
S16 T8N R5W

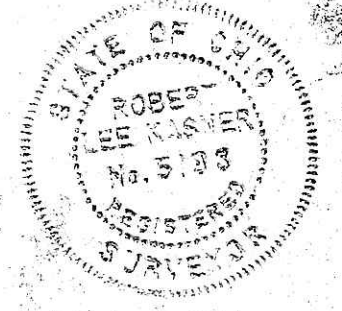
NORTH

124313

REC'D. December 5, 1980
AT 3:41 O'CLOCK P.M.
RECORDED December 18, 1980
Plat VOL 9 PG. 87
Holmes Co. Ohio Fee: 10.54
Richard Green Recorder



Note: This drawing is not the
results of a complete field survey
by the drafter signed author.
It is a plat based on information
contained in drafter signed
references.



DANIEL E. HERSHBERGER
known as part of S16 T8N
R5W of Clark Twp., Hol. Co.,
Ohio.
Robert L. Kasnar, P.S. 5193
P.E. 28820
10/22/80

Deed Vol. 211-Pg. 579

S16 T8N R5W