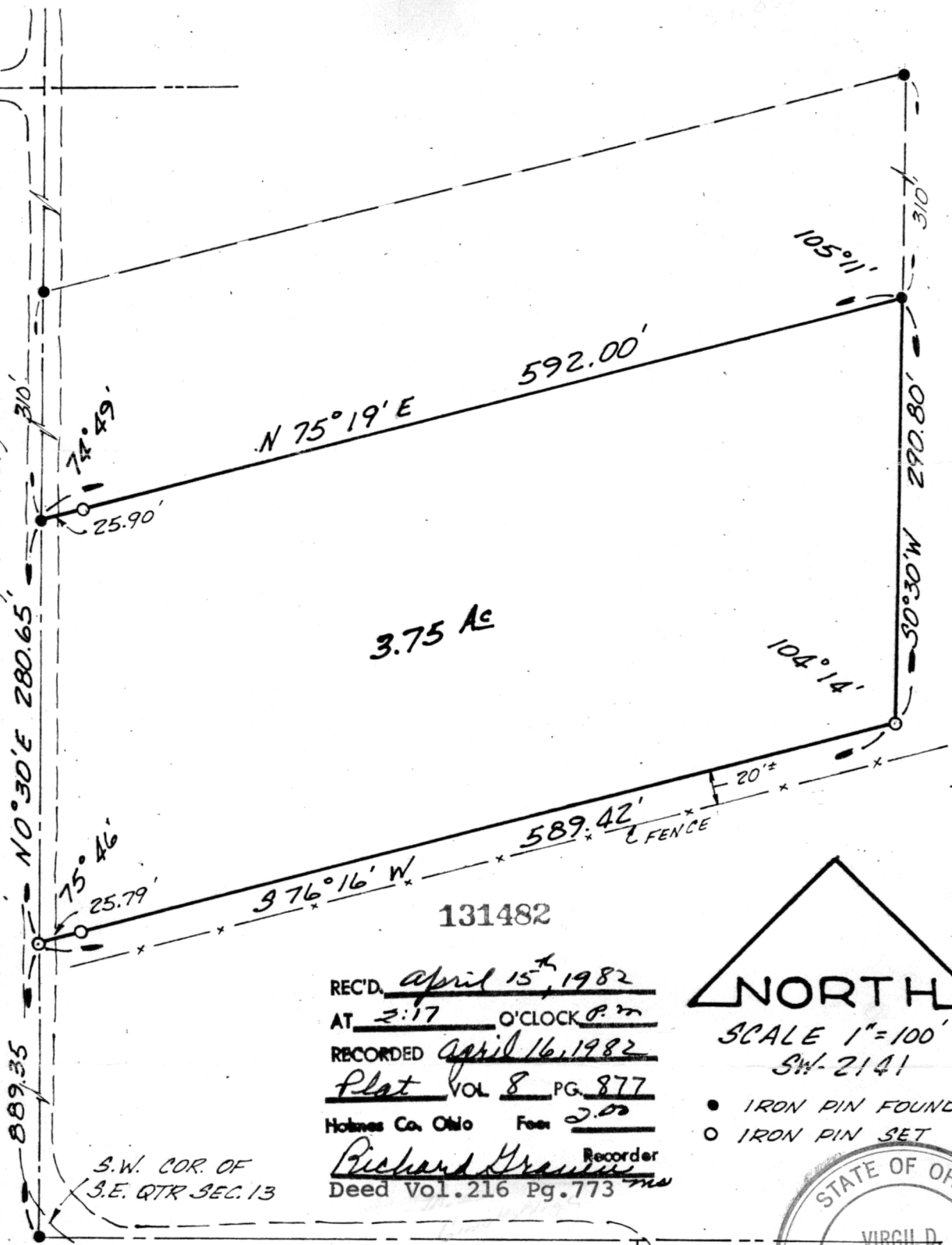


MAP OFFICE COPY

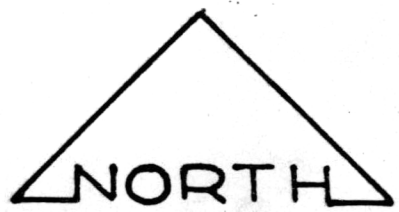
T.R. # 401 (Formerly T.R. 461)



3.75 Ac

131482

REC'D. April 15<sup>th</sup>, 1982  
 AT 2:17 O'CLOCK P.M.  
 RECORDED April 16, 1982  
Plat VOL 8 PG. 877  
 Holmes Co. Ohio Fee 2.00  
Richard Green Recorder  
 Deed Vol. 216 Pg. 773 *ms*



SCALE 1"=100'  
 SW-2141

- IRON PIN FOUND
- IRON PIN SET



S.W. COR. OF  
 S.E. QTR. SEC. 13

**MAP OF SURVEY**  
 3.75 AC PCL. S.E. QTR. SEC. 13  
 WALNUT CREEK TWP.  
 R-5W, T-9N  
 HOLMES COUNTY, OHIO  
 for PAUL SCHROCK

SHAFFER, JOHNSTON, LICHTENWALTER  
 & ASSOCIATES, INC.

CONSULTING ENGINEERS - SURVEYORS  
 MANSFIELD OHIO WOOSTER



I hereby certify this survey and plat to be correct to the best of my knowledge this 8<sup>TH</sup> day of APRIL 1982

Virgil D. Landis  
 Virgil D. Landis, P. S. # 6551