

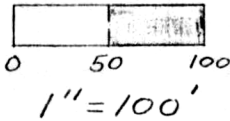
Deed Reference: (196/737)
(186/295)

LOT 26 21
25 22
LINE

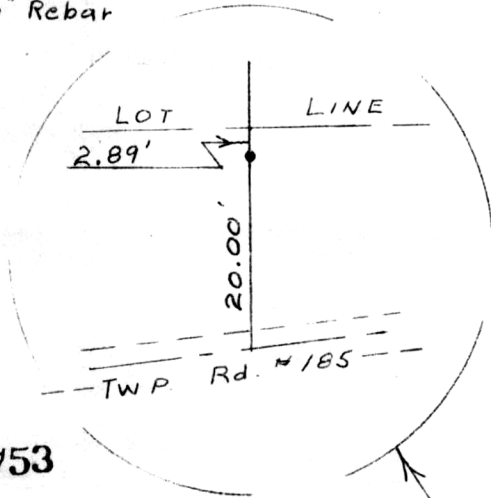


Bearing Basis, U.S.G.S. Quadrangle Sheet

Plat of a Tract of Land
For
Henry O. Yoder
In
Lots 24 & 25
Third Quarter
Range 5W, Township 10N
Salt Creek Township
Holmes County
Ohio
May 4, 1981



•=Set 1"x30" Rebar



HENRY O. YODER
196/737

S 89° 46' 58" W
254.93'

852.32'

LINE

LOT

HENRY A.
HERSHBERGER
186/295

S 0° 13' 02" E
845.48'

818.08'
N 0° 13' 02" W

TOTAL AREA
5.000 AC.

(LOT 25
4.938 AC.)

(LOT 24
0.062 AC.)

REC'D. December 24 1981

AT 10:06 O'CLOCK AM LOT LINE

RECORD December 28 1981

Plat VOL. 8 PG. 849

Holmes Co. Ohio Fee: 2.00

Richard [Signature] Recorder

Deed Vol. 215-Pg. 775

George W. Stewart
George W. Stewart, Registered Surveyor #6357



Produced By
G. A. STEWART INC.
450 South Fourth St. (614) 622-2783
COSHOCKTON, OHIO 43812

MAP OFFICE COPY