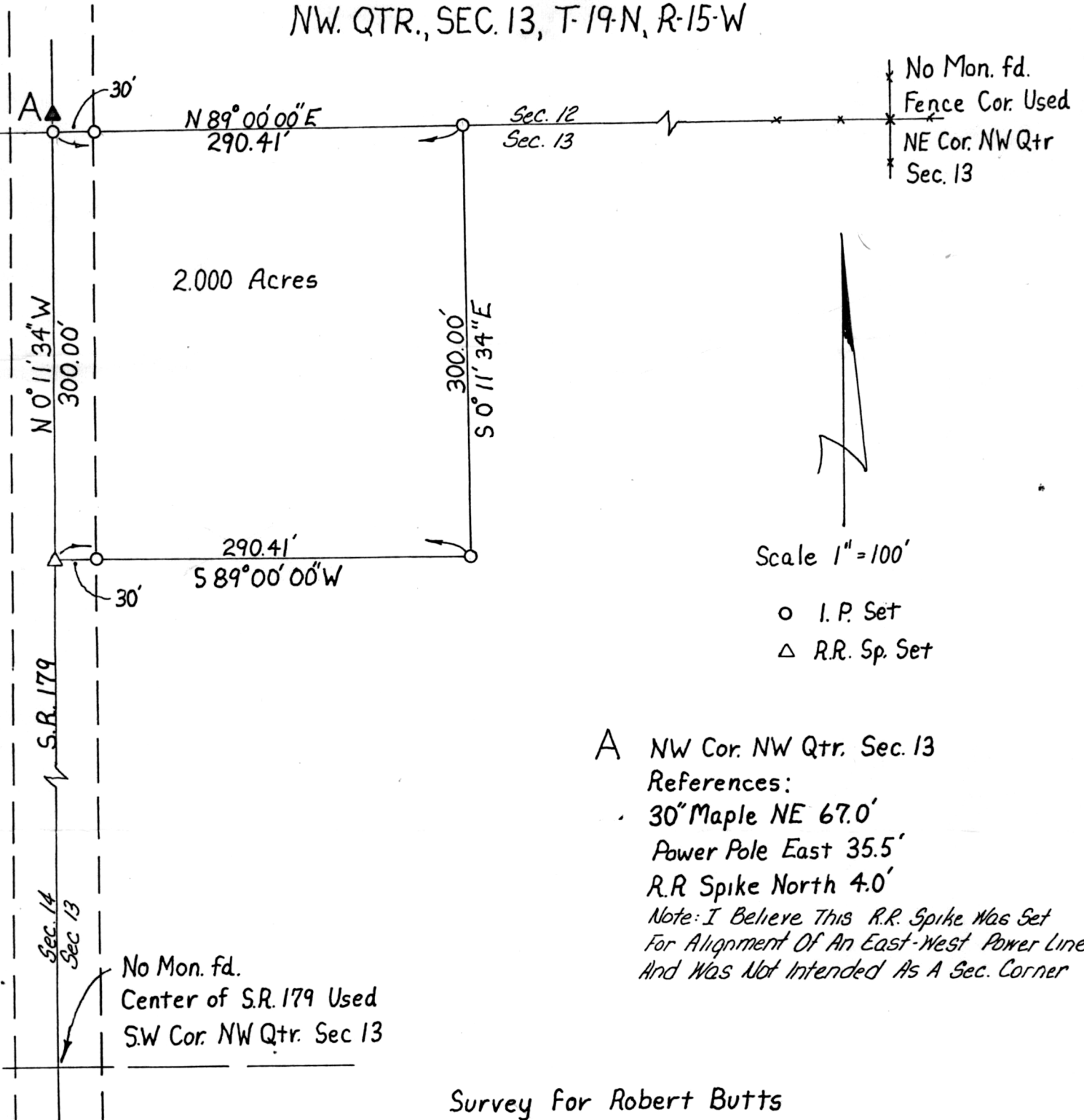


WASHINGTON TWP.  
 HOLMES COUNTY, OHIO  
 NW. QTR., SEC. 13, T-19-N, R-15-W



Scale 1" = 100'  
 ○ I.P. Set  
 △ R.R. Sp. Set

A NW Cor. NW Qtr. Sec. 13  
 References:  
 30" Maple NE 67.0'  
 Power Pole East 35.5'  
 R.R. Spike North 4.0'  
 Note: I Believe This R.R. Spike Was Set  
 For Alignment Of An East-West Power Line  
 And Was Not Intended As A Sec. Corner

Survey for Robert Butts  
 I Certify This Plat To Be Correct  
 To The Best Of My Knowledge

William H Long Aug 4, 1981  
 William H Long R.S. 6505 Date  
 RD #1 Box 69A  
 Big Prairie, Ohio 44611

REC'D. October 26, 1981  
 AT 11:43 O'CLOCK A.M.  
 RECORDED Oct. 26, 1981  
Plat VOL 8 PG. 819  
 Holmes Co. Ohio Fee: 2.00  
Richard Steiner Recorder

Deed Vol. 215-Pg. 106

MAP OFFICE COPY