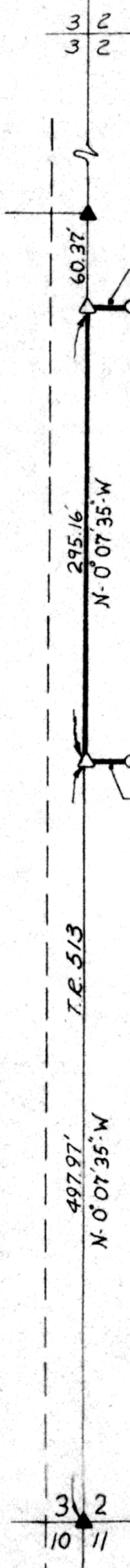
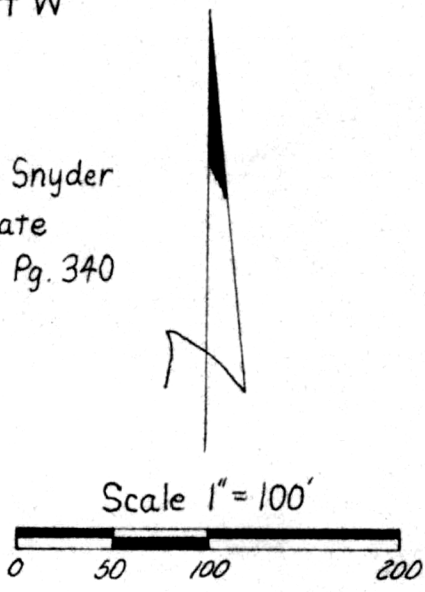


RIPLEY TOWNSHIP
 HOLMES COUNTY OHIO
 SW. QTR. SEC. 2 T. 17-N R. 14-W



Edith Snyder
 Estate
 Vol. 146 Pg. 340

2.000 Ac.



Frank D. Swires
 Vol. 112 Pg. 312
 128525

- ▲ R.R. Spike Found
- △ R.R. Spike Set
- I.P. Set - 3/4" dia. x 30"

REC'D. October 8th 1981
 AT 9:56 O'CLOCK A.M.
 RECORDED October 8, 1981
Plot VOL. 8 PG. 806
 Holmes Co. Ohio Fee: 2.00
Richard Grayson Recorder

References:
 Deeds As Noted
 Survey By Rudolph Dtd. 1-30-81 in SE
 Qtr. Sec. 3

Deed Vol. 214-Pg. 775

I Certify This Plat To Be Correct
 To The Best Of My Knowledge.

Original Plat Filed With Map Office
 Richard Grayson, Recorder

William H Long Aug. 12, 1981
 William H. Long R.S. 6505 Date
 RD#1 Box 69 A
 Big Prairie Ohio 44611
 Ph 216-378-3063

MAP OFFICE COPY