

WM. TERRY BURKEY SURVEYING



RABER TO YODER SURVEY
 N. W. QTR. SECTION 21
 TOWNSHIP 8 RANGE 6
 MECHANIC TOWNSHIP
 HOLMES COUNTY, OHIO
 COMPLETED 12/2/1978

4

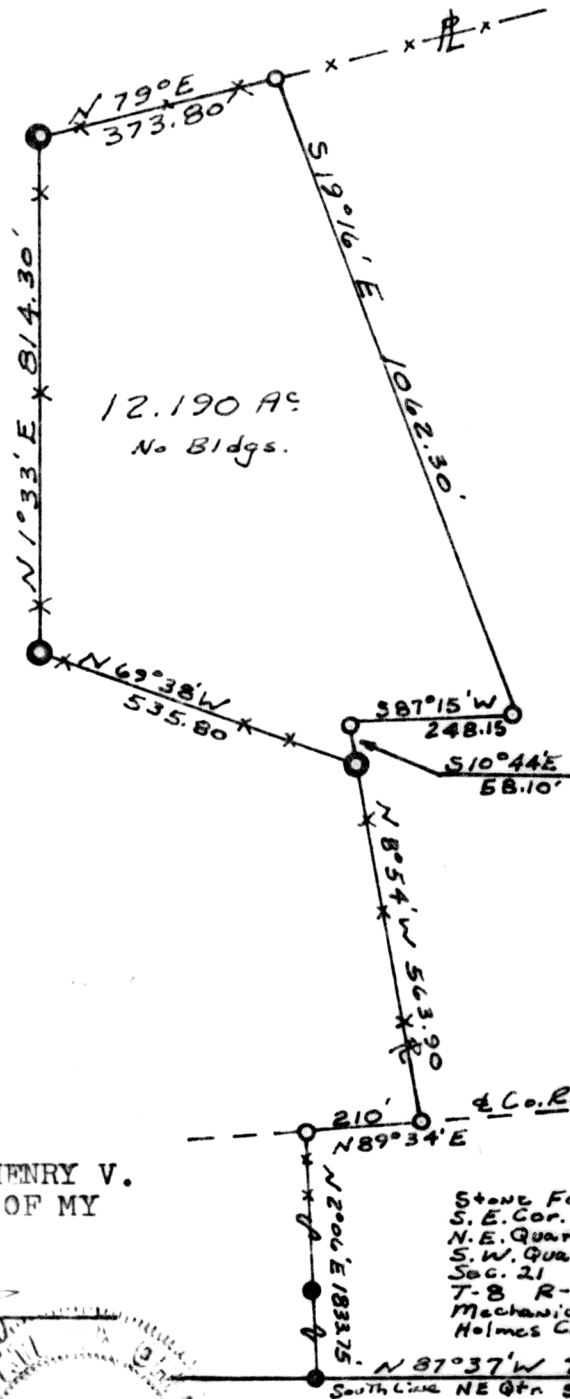
- Pin Set
- Pin Fd.
- Stone Fd.
- Pin Set by Cor. Post

Scale 1" = 300'

John
 A.
 Yoder

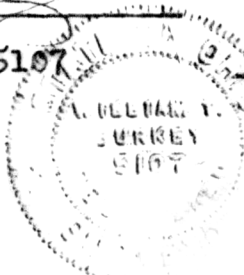
124257

REC'D. December 2, 1980
 AT 10:56 O'CLOCK A.M.
 RECORDED December 2, 1980
Plat VOL 8 PG. 685
 Holmes Co. Ohio Fee: 2.00
Richard Krause Recorder
 Deed Vol. 211-Pg. 532



I CERTIFY THIS SURVEY MADE FOR HENRY V. RABER TO BE CORRECT TO THE BEST OF MY KNOWLEDGE AND BELIEF.

SIGNED William T. Burkey
 WILLIAM T. BURKEY
 REGISTERED SURVEYOR #5107
 STATE OF OHIO



MAP OFFICE COPY