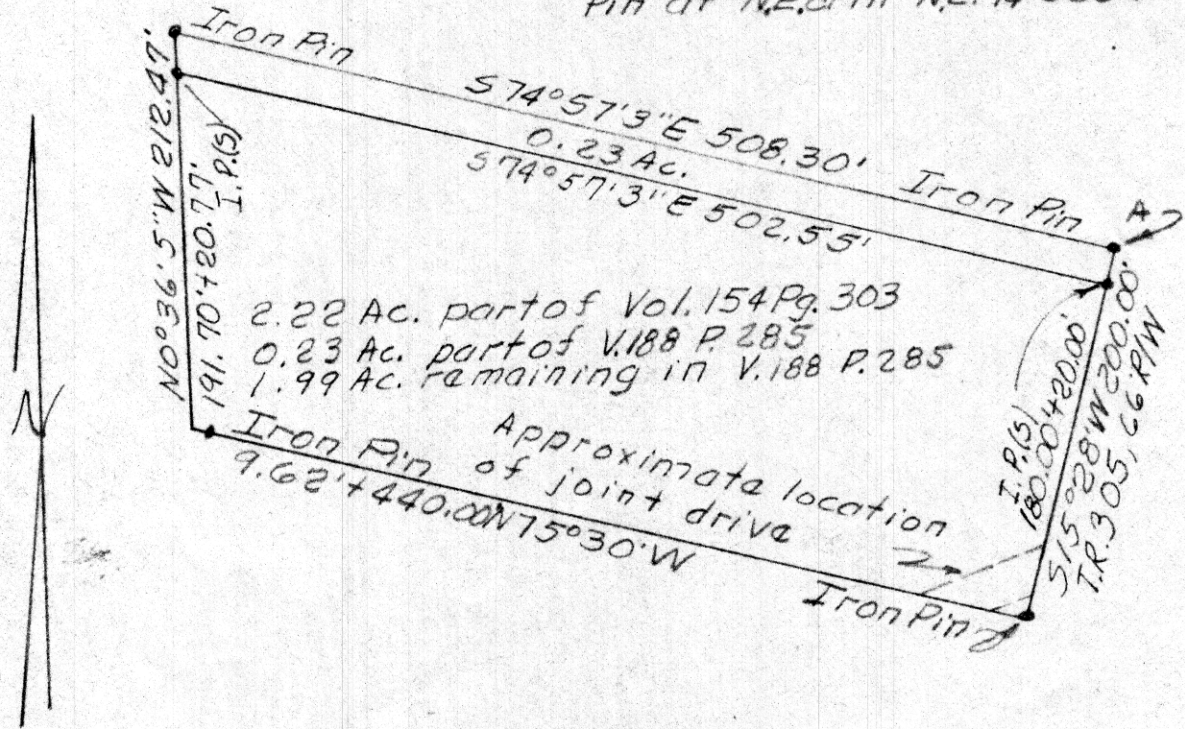


Lloyd Uhl

Point A is N87°W 552.42' and
S13°25'10"W 1218.36' from an Iron
Pin at NE. 1/4 523 T9N R7W



123881

REC'D. November 3rd 1980
 AT 2:16 O'CLOCK P.M.
 RECORDED November 4, 1980
Plat VOL. 8 PG. 679
 Holmes Co. Ohio Fee: 2.00
Richard Drennon Recorder

Scale: 1"=100'

Deed Vol. 211-Pg. 326



PLAT OF A SURVEY IN
 NE. 1/4 523, T9N, R7W of
 Hardy Township, Holmes County
 and State of Ohio

Robert L. Kasner, P.S. 5193

8/4/74
10/18/80