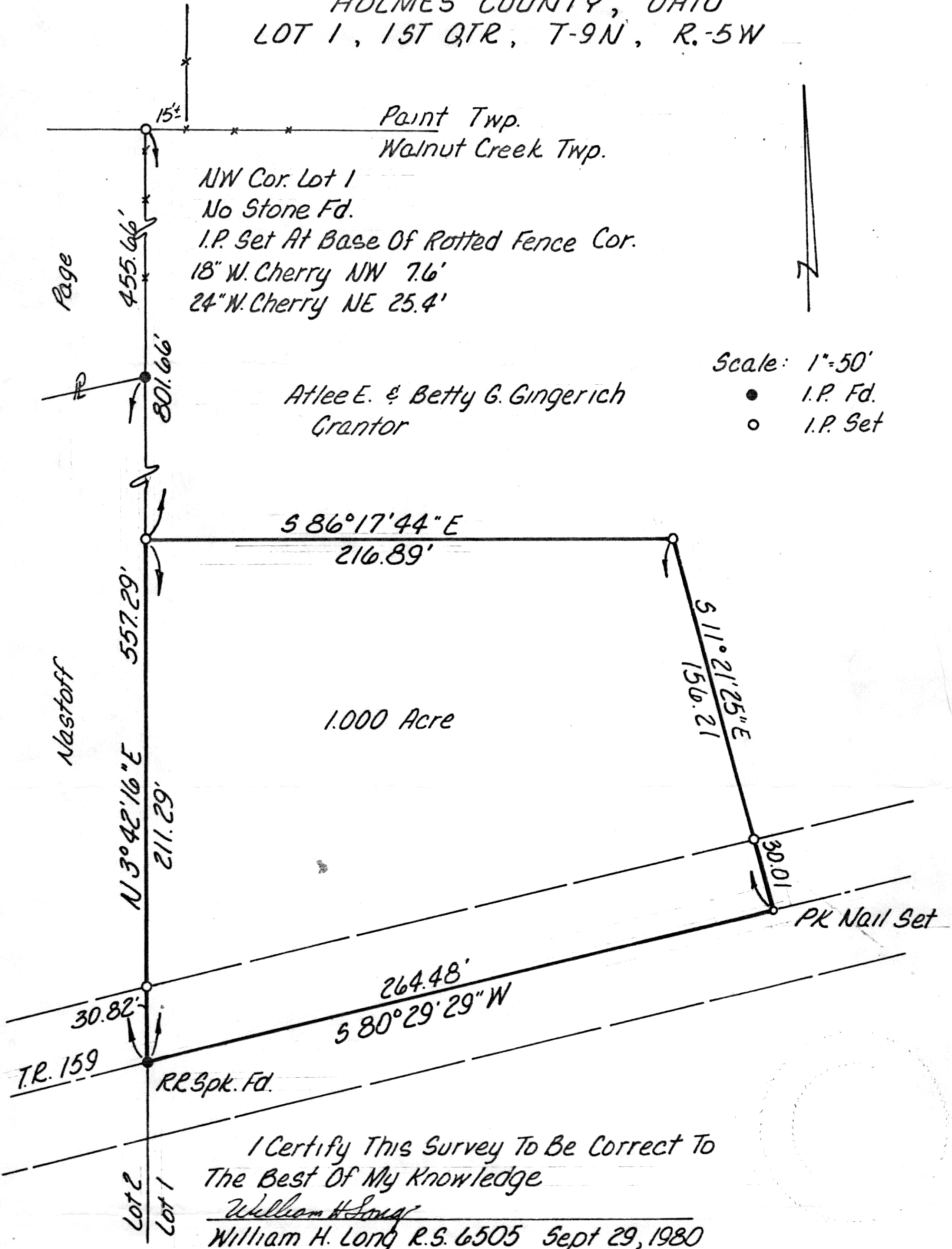


WALNUT CREEK TOWNSHIP
 HOLMES COUNTY, OHIO
 LOT 1, 1ST QTR, T-9N, R-5W



NW Cor. Lot 1
 No Stone Fd.
 I.P. Set At Base Of Rotted Fence Cor.
 18" W. Cherry NW 7.6'
 24" N. Cherry NE 25.4'

Atlee E. & Betty G. Gingerich
 Grantor

Scale: 1"=50'
 ● I.P. Fd.
 ○ I.P. Set

I Certify This Survey To Be Correct To
 The Best Of My Knowledge
William H. Long
 William H. Long R.S. 6505 Sept 29, 1980

123672

APPROVED BY
 TAX MAP OFFICE

Date Oct. 6 1980
 BB

APPROVED BY
 THE HOLMES COUNTY HEALTH DEPARTMENT
 BY [Signature] G.W.S.

REC'D: October 17, 1980

DATE 10-10-80

AT 2:05 O'CLOCK P.M.

RECORDED: October 20, 1980

HOLMES CO. Plat Vol. 8 Pg. 675

FEE: \$2.00

Richard Gruener RECORDER

Deed Vol. 211-Pg. 113

MAP OFFICE COPY