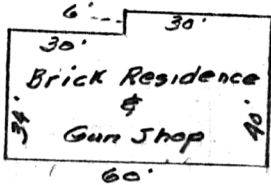


DAN J. RABER  
N88°00'W  
280.30'

123295

REC'D: September 25, 1980  
AT 9:58 O'CLOCK A.M.  
RECORDED: September 25, 1980  
HOLMES CO. Plat VOL. 8 PG. 665  
FEE: \$ 2.<sup>00</sup>  
Richard Draven RECORDER

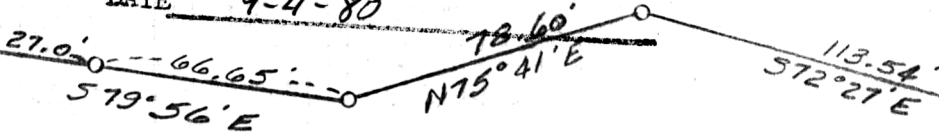
DEED VOL. 210-PG. 737



3.212 acres

APPROVED BY  
THE HOLMES COUNTY HEALTH DEPARTMENT  
BY *[Signature]* G.W.S.

DATE 9-4-80



MOSE V. HERSHBERGER

MAP OFFICE COPY

MISKIMEN ENGINEERING & SURVEYING  
CONSULTING ENGINEER & PROFESSIONAL LAND SURVEYORS

640 WEST HIGH AVENUE  
NEW PHILADELPHIA, OHIO 44663

Plat of Survey for  
JONAS HERSHBERGER

CERTIFICATE OF SURVEYOR  
I, the undersigned, hereby certify that this  
map is true and correct.

*[Signature]*  
Registered Surveyor No. 4043

Located in Northeast Quarter Section 15  
T 8 - R 5 Clark Township Holmes Co.  
Pt. of a 138.221 ac. tr. V. 198 P. 337  
Scale: 1" = 50ft. Date: 3/13/80  
o denotes iron pin set

0.919 ac. tr.  
ABNER HERSHBERGER #60  
54°21'W  
189.79'

ROAD  
51°38'W  
225.99'

COUNTY

N88°00W  
-974.60'  
Northeast Corner  
Section 15

N20°46'W  
225.16'

124.01'  
N19°28'E

125.76'  
N29°58'E