

REC'D: February 15, 1980

AT 11:26 O'CLOCK A.M.

120752

RECORDED: February 15, 1980

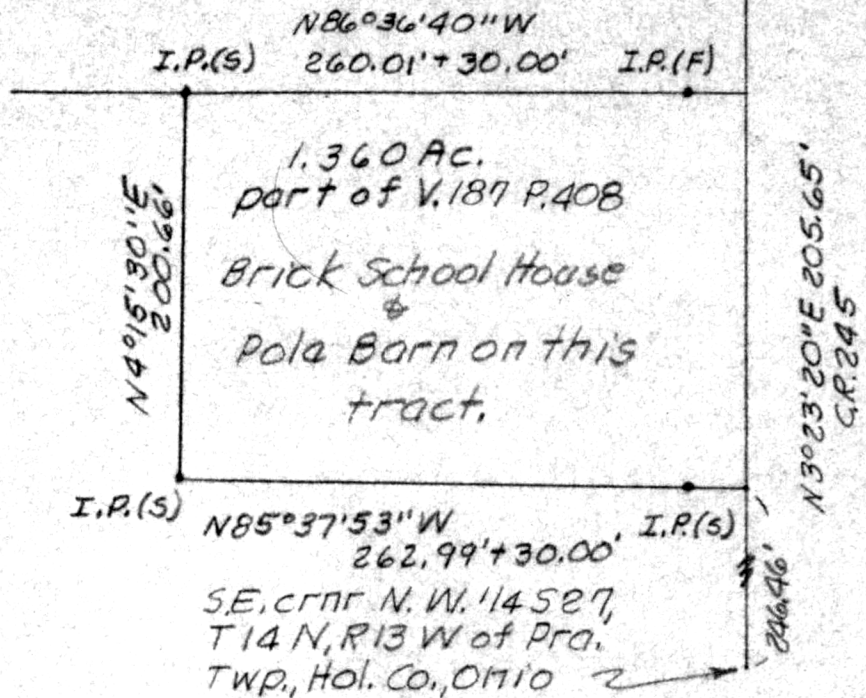
HOLMES CO. Plat VOL 8 PG 572

FEE: \$ 2.00

Richard ~~Green~~ RECORDER



Deed Vol. 208 Page 717



Known as part of N.W. 1/4 S 27, T 14 N, R 13 W of Prairie Twp., Hol. Co., Ohio, and part of V. 187 P. 408.

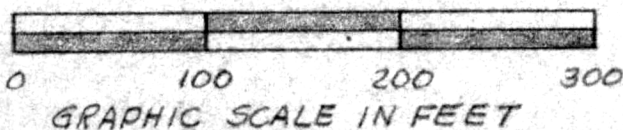
Beginning S.E. corner N.W. 1/4 S 27 in C.R. 245; thence with E. line N.W. 1/4 S 27 in C.R. 245 N 3° 23' 20" E 246.46' to the true point of beginning of the here in described parcel;

thence leaving E. line S 27 in C.R. 245 N 85° 37' 53" W 292.99' to an iron pin set and passing an iron pin set at 30.00';

thence N 4° 15' 30" E 200.66' to an iron pin set;

thence S 86° 36' 40" W 290.01' to the E. line N.W. 1/4 S 27 in C.R. 245 and passing an iron pin found at 260.01';

thence with E. line N.W. 1/4 S 27 in C.R. 245 S 3° 23' 20" W 205.65' to the point of beginning and containing 1.360 acres, but subject to all legal highways.



SCHOOL HOUSE SURVEY

Known as part of N.W. 1/4 S 27, T 14 N, R 13 W of Prairie Twp., Hol. Co., Ohio.
Robert L. Kasner, P.S. 5193
P.E. 28820

MAP OFFICE COPY

11/6/79