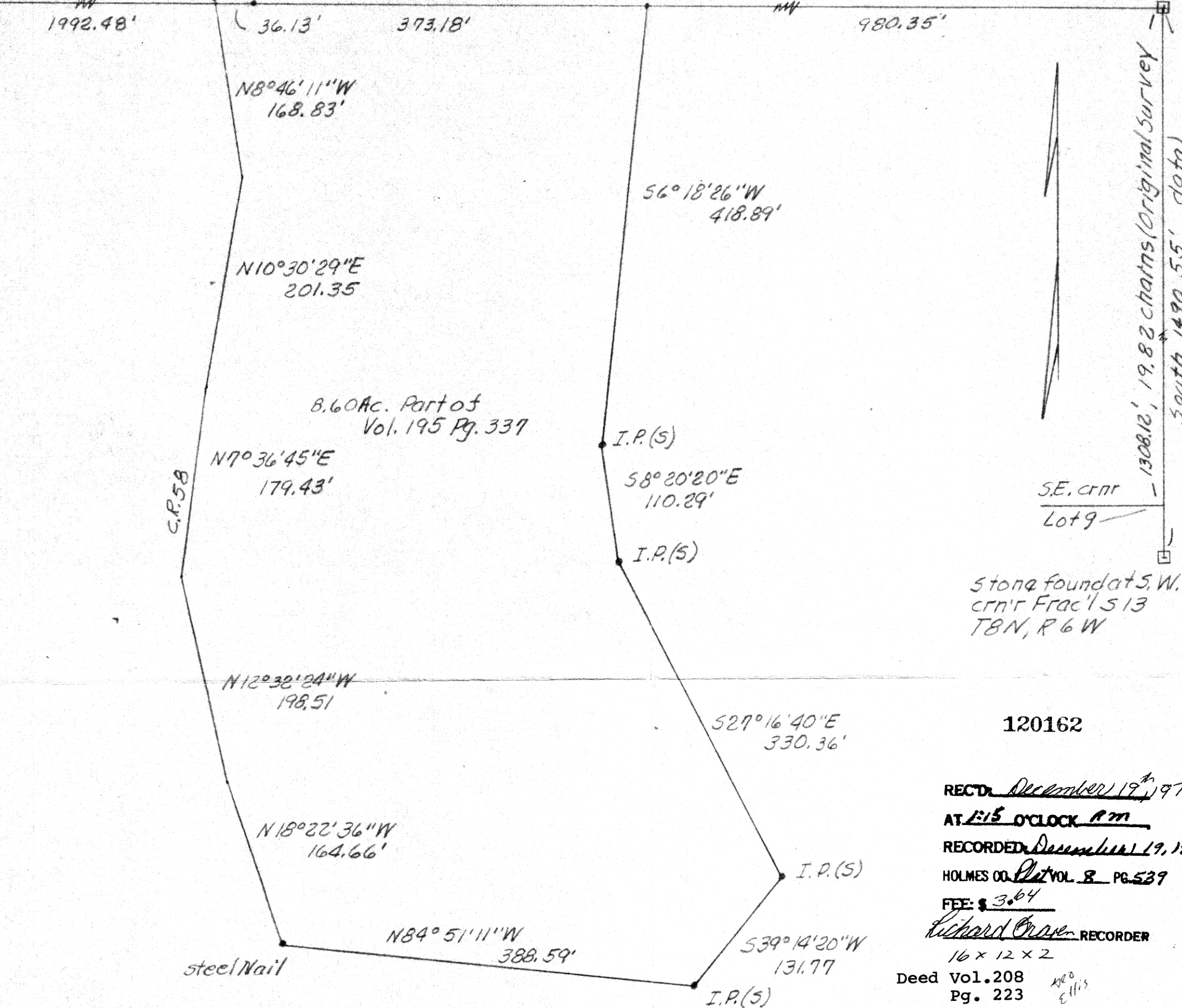


Stone found N.W. crnr
Lot 9, 3rd 1/4, T8N, R6W
N8°46'11"W 2.16'

Stone found at N.E. crnr
Lot 9, 3rd 1/4, T8N, R6W



8.60 Ac. Part of
Vol. 195 Pg. 337

C.P. 58

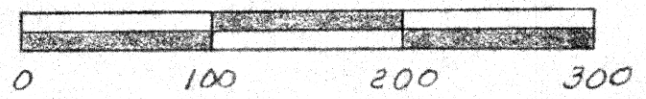
S.E. crnr
Lot 9

Stone found at S.W.
crnr Frac' 1/3
T8N, R6W

120162

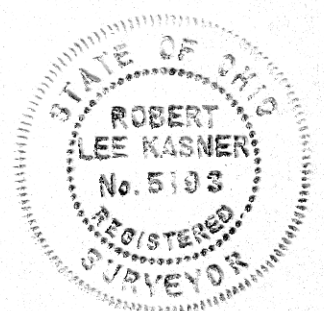
REC'D December 19th 1979
 AT 1:15 O'CLOCK P.M.
 RECORDED December 19, 1979
 HOLMES CO. Vol. 8 PG. 539
 FEE: \$ 3.64
Richard Crowe RECORDER
 16 x 12 x 2

Deed Vol. 208
Pg. 223



APPROVED BY
 TAX MAP OFFICE
 Date Mar 13, 79

PLAT OF A SURVEY FOR
 ELI A. YODER
 (Grantor)
 Known as part of Lot 9, 3rd 1/4,
 T8N, R6W, of MECH. TWP., HOL.
 Co., Ohio.
 Robert L. Kasnar, P.S. 5193
 P.E. 28820.



MAP OFFICE COPY