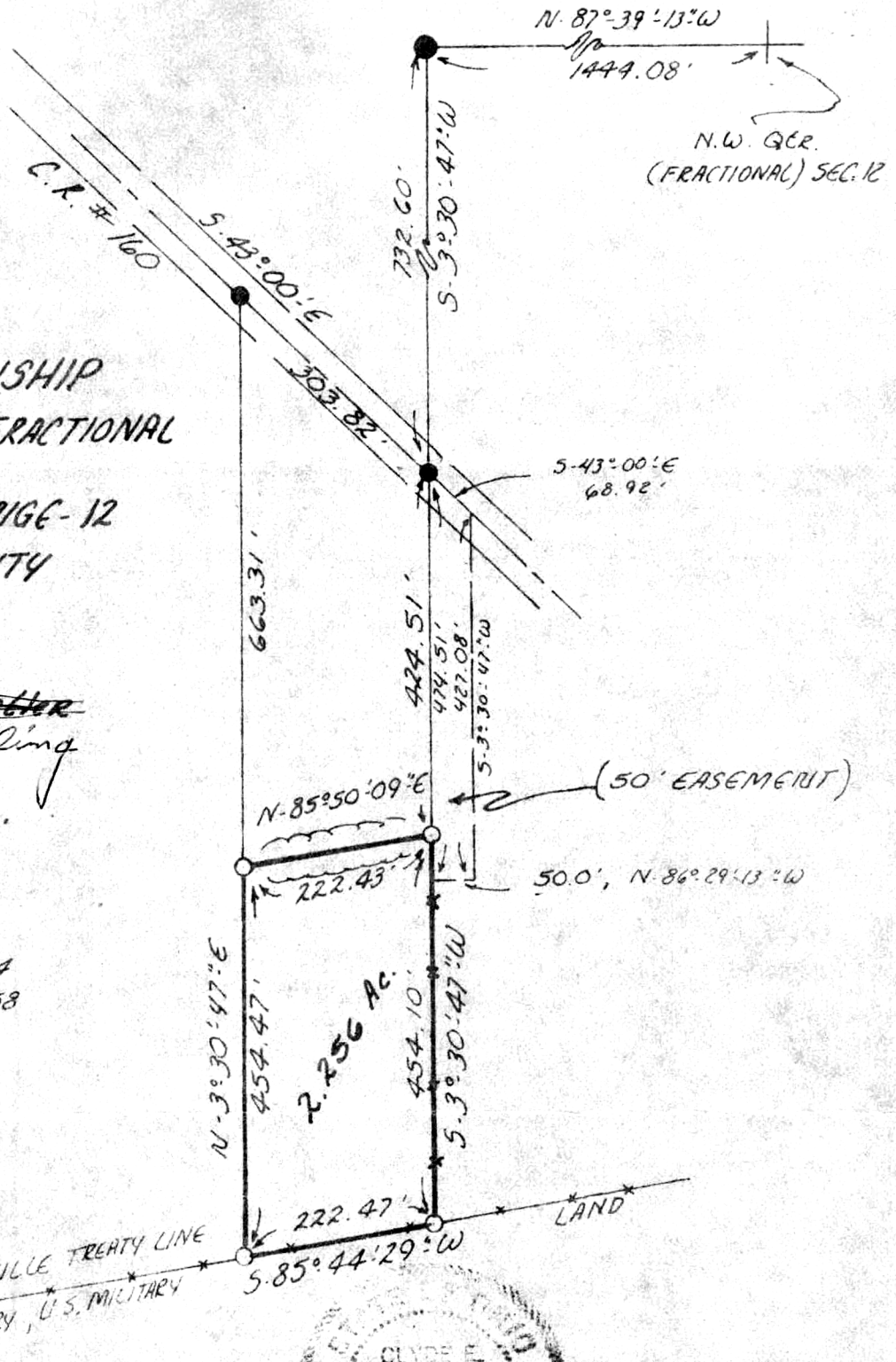


SALT CREEK TOWNSHIP  
 Part of the N.W. Qtr. of FRACTIONAL  
 SECTION - 12  
 TWP. - 14 RANGE - 12  
 HOLMES COUNTY  
 OHIO  
 FEB. 1979

For: ~~Frank Hostetter~~  
 B-M Drilling

SCALE 1" = 200'  
 ○ I. P. SET  
 ● I. P. FOUND

Ref: Vol - 8, Pg - 184  
 Vol - 123, Pg - 358



119967

I CERTIFY THIS SURVEY TO BE CORRECT TO THE BEST OF MY KNOWLEDGE.

CLYDE E. PURDY RS. #4900

RECT: November 28, 1979  
 AT 3:56 O'CLOCK PM  
 RECORDED: Nov. 29, 1979  
 HOLMESCO. Plot VOL. 8 PG. 525  
 FEE: \$ 2.00  
 Richard Shuman RECORDER  
 Deed Vol. 208 Page 79

MAP OFFICE COPY