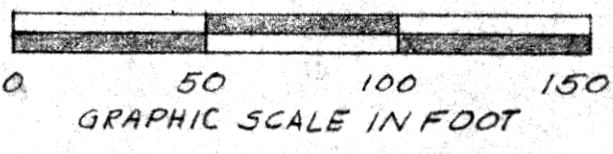
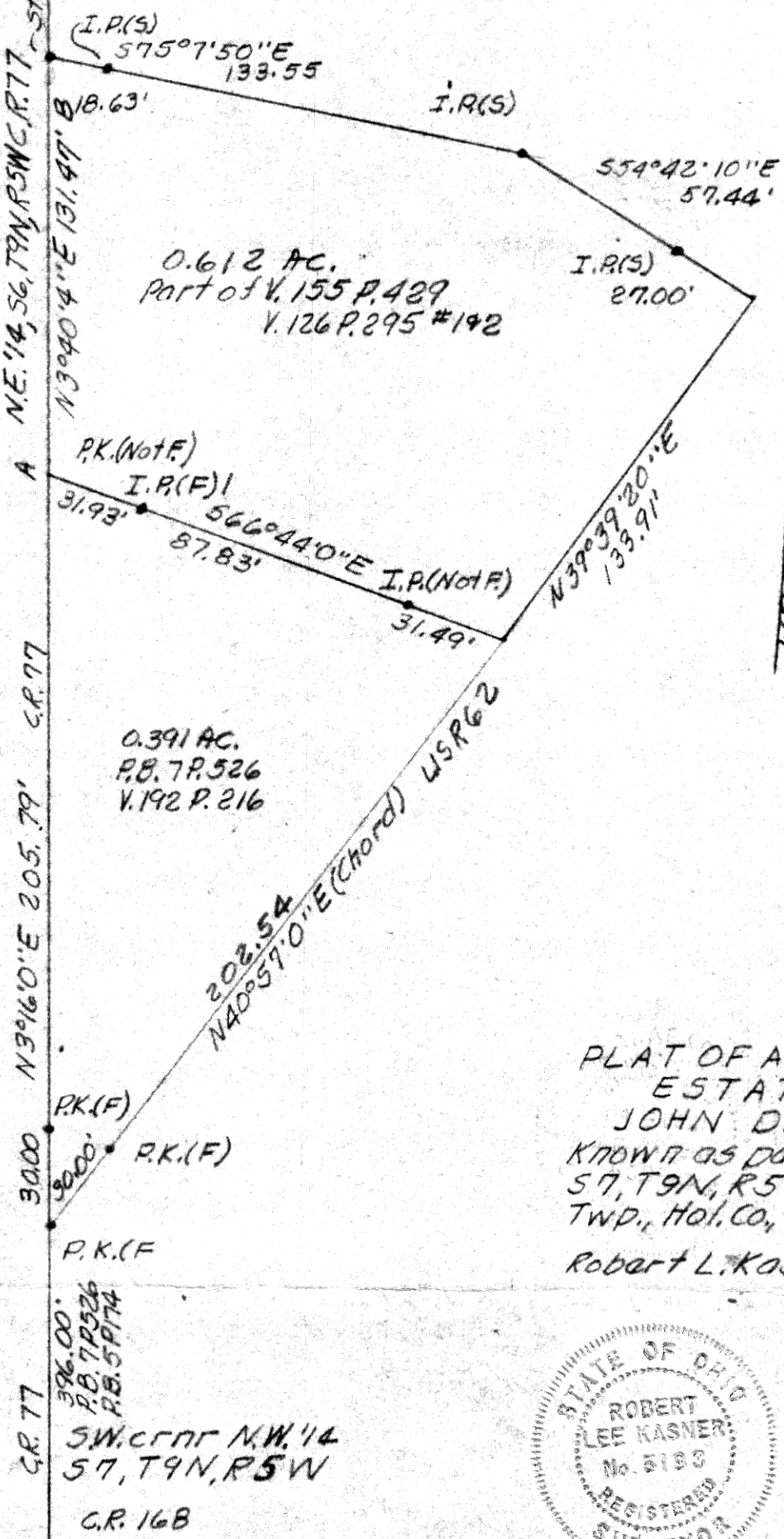


CR. 77  
 396.00' P.B. 7P.526 P.B. 5P.174  
 SW. CORNER N.W. 14  
 57, T9N, R5W  
 C.R. 16B

A straight line sight used from P.S. to P.K. 30.00' N.O.S. intersection of U.S.R. 62 & C.R. 77. Point B was set on this line. When Point B was turned in from I.P.(F) a bearing and distance of N3°40'4"E 131.47' was obtained.



V.150 P.251



NORTH

119958

REC'D: November 28, 1979  
 AT 11:31 O'CLOCK A.M.  
 RECORDED: Nov. 29, 1979  
 HULLS CO. Plot VOL. 8 PG. 524  
 FEE: \$ 2.40  
Richard Mann RECORDER  
 Deed Vol. 208--Pg. 69

PLAT OF A SURVEY OF  
 ESTATE OF  
 JOHN DAUWALDER  
 KNOWN AS PART OF N.W. 14  
 57, T9N, R5W of Berlin  
 TWP., HOL. CO., OHIO.  
 Robert L. Kasner, P.S. 5193  
 P.E. 28820



**MAP OFFICE COPY**

11/20/79