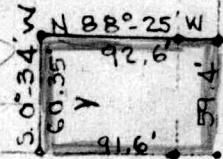


SCHROCK
VOL. 123, Pg. 442

0.1266
ACRE



S 89°-00' E. 703.5'

2.077 ACRES.

ALBERT YODER

N. 89°-00' W. 667.0'

132.0'
S. 10°-30' W.

119435

REC'D: October 12, 1979
AT 1:51 O'CLOCK P.M.
RECORDED: October 15, 1979
HOLMES CO. Plat VOL. 8 PG. 502
FEE: \$ 2.00

Richard Kraus RECORDER
no.

Deed Vol. 207 - Pg. 506



MAP OFFICE COPY

N.W. 1/4 SEC 13
N. 10°-30' E.
TWP. 9, RD. 461

TWP. RD. 156

PLAT OF A SURVEY OF A PART OF
THE EAST HALF OF THE NORTH WEST
QUARTER OF SEC. 13, TWP. 9, RANGE 5,
WALNUT CREEK TOWNSHIP, HOLMES
COUNTY, OHIO FOR ROMAN SCHROCK.
SCALE 1"=100'

REVISED
SEPT 29, 1979
0.1266 ACRE

R. H. HUNSINGER, #3685, REGISTERED SURVEYOR