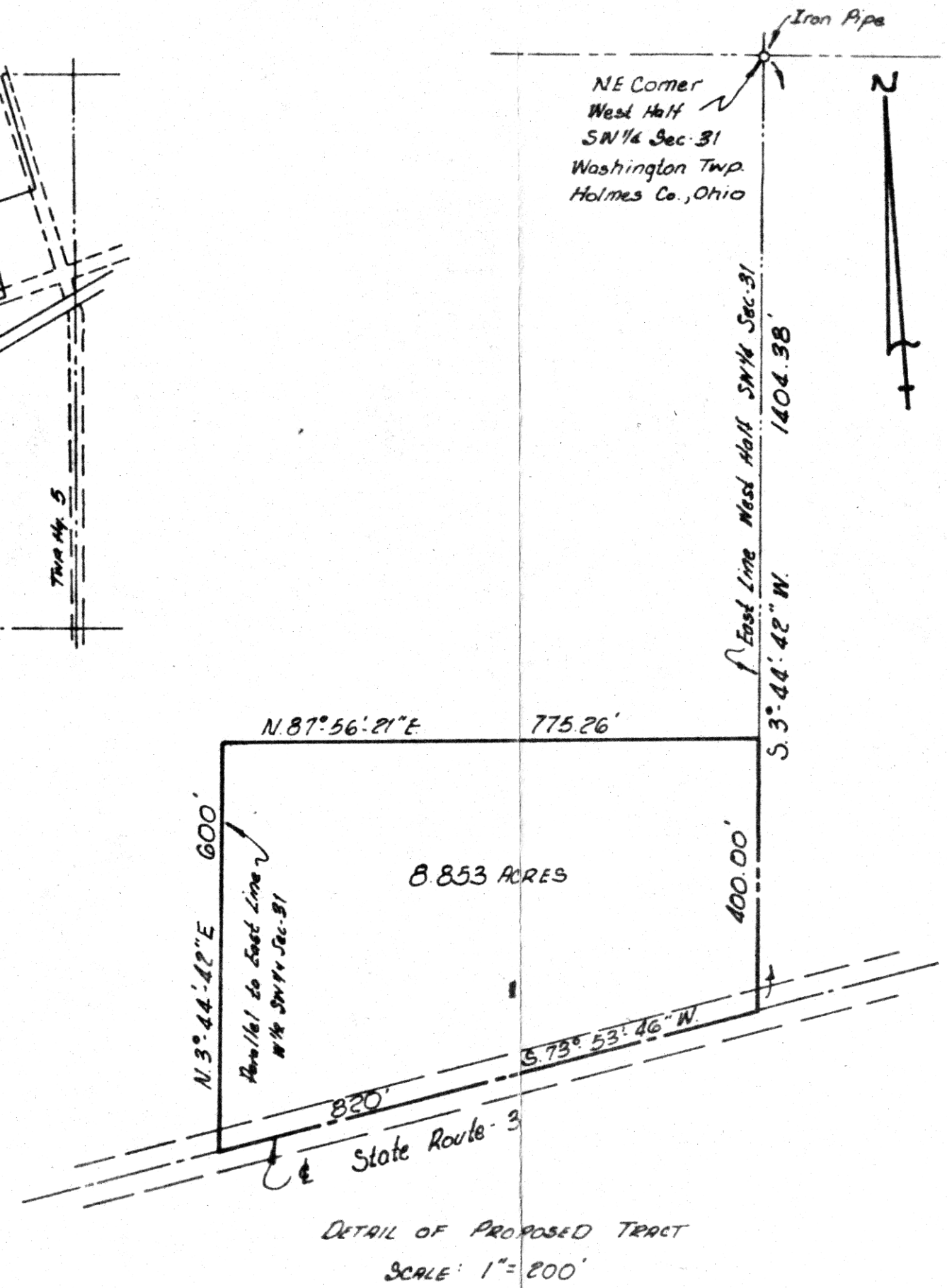
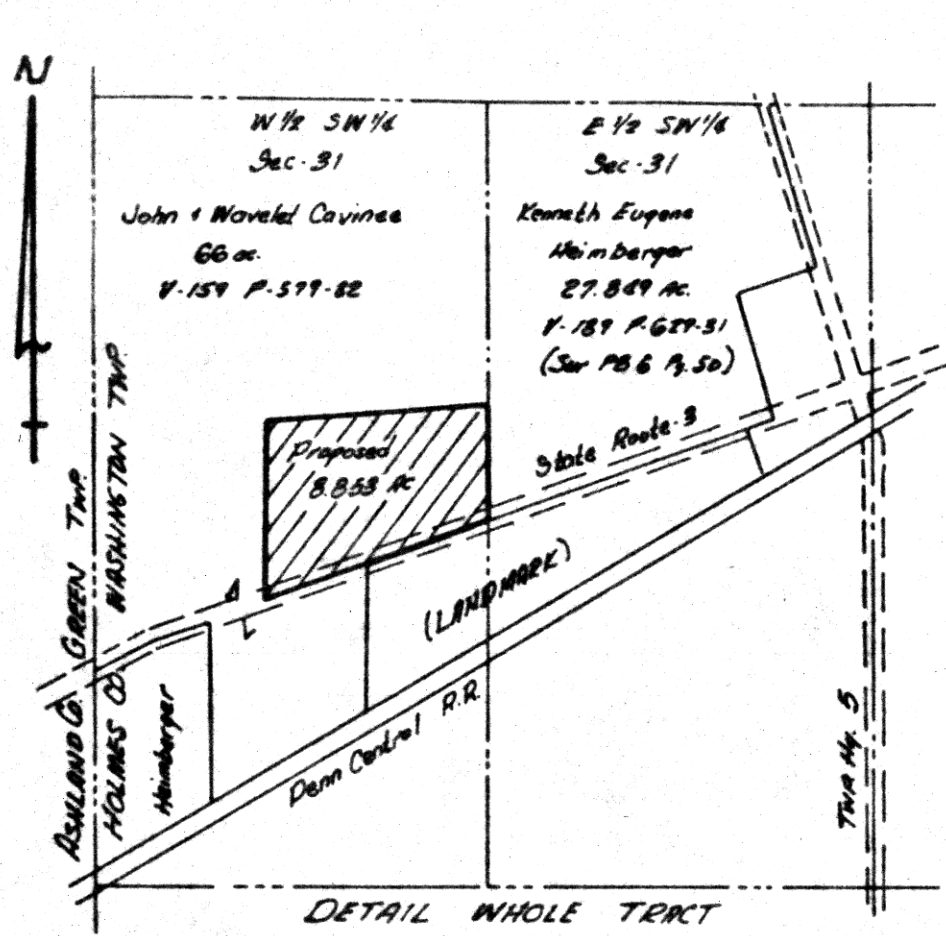


**SURVEY PLAT MAP**  
**WEST HALF SW 1/4 SEC-31**  
**TOWN 20N RANGE 15W**  
**HOLMES COUNTY, OHIO**  
**WASHINGTON TOWNSHIP**

I HEREBY CERTIFY THAT THE ATTACHED PLAT WAS PREPARED BY ME AND THAT THE MONUMENTATION WILL BE SET AS SOON AS GRADING IN THE AREA OF THE MONUMENT IS COMPLETED.

*Robert A. Sanford, P.E.* DATE 2/15/79  
 PROFESSIONAL SURVEYOR 5424



117364

RECEIVED April 11, 1979  
 AT 9:41 O'CLOCK A.M.  
 RECORDED April 11, 1979  
 HOLMES CO. PLAT VOL 8 PG 404  
 FEE PAID 3.<sup>33</sup>

*Richard Draven* Sh.  
 HOLMES COUNTY RECORDER  
 10 1/4 X 16 1/4 X 2  
 Deed Vol. 205-Pg. 381

**MAP OFFICE COPY**