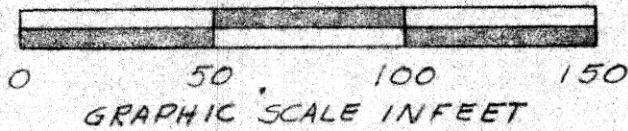


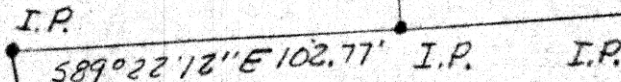
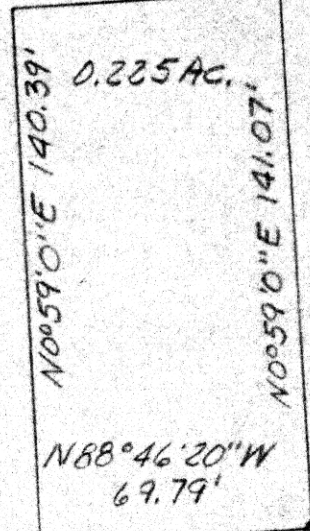
589°20'0"E 69.79'  
S. Side Logsdon  
Ave.

I.P.



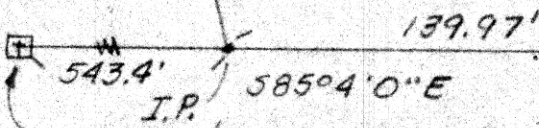
Known as part of N.E. '14  
S19, T9N, R7W of Hardy  
Twp., Hol. Co., Ohio

Robert L. Kasner, P.S. 5193  
P.E. 28820  
1123179



E. line S. Washington St.

N7°0'0"W 104.11'



Stone at S.W. corner N.E. '14 S19 T9N R7W Vol. 89 Pg 305

Known as part of N.E. '14 S19, T9N, R7W of Hardy Twp.,  
Hol. Co., Ohio.

Beginning at a stone as per Vol. 89 Pg. 305, at S.W. corner  
N.E. '14 S19; thence with S. line N.E. '14 S19 S85°4'0" E 683.39'  
thence leaving the S. line N.E. '14 N7°0'0" W 104.11' to an iron  
pin; thence S89°22'12" E 102.77' to an iron pin at the true  
point of beginning of the herein described parcel;

thence N0°59'0" E 140.39' to a point on S. line of Logsdon  
Ave.;

thence with Logsdon Ave. S89°20'0" E 69.79' to an iron pin;  
thence leaving Logsdon Ave. S0°59'0" W 141.07' to an iron pin,  
thence N88°46'20" W 69.79' to the point of beginning  
and containing 0.225 acres.

116767

Res'd. for record January 1979 at 4:30 o'clock P.

Recorded Feb. 1, 1979 in Plot Vol. 8 Pg. 373

Holmes County, Ohio Richard Owen Recorder. Fee: \$ 2.00

Deed Vol. 204-Pg. 705

MAP OFFICE COPY