

116142

RECD: November 13, 1978

AT 1:57 O'CLOCK P.M.

RECORDED: Nov. 20, 1978

HOLMES CO. Plat VOL. 8 PG. 339

FEE: \$ 2.00

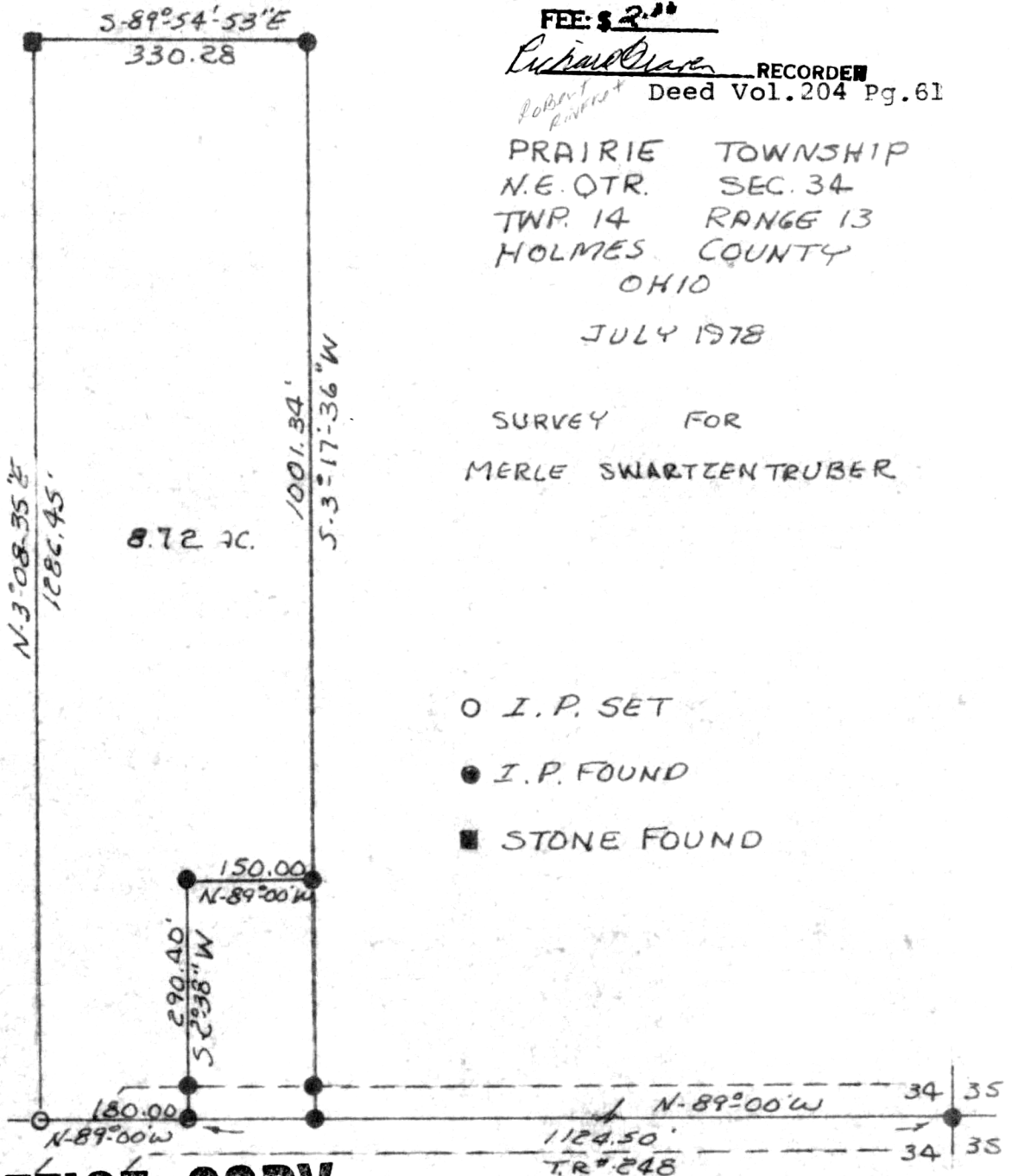
Richard Owen RECORDED
Deed Vol. 204 Pg. 61

PRAIRIE TOWNSHIP
N.E. QTR. SEC. 34
TWP. 14 RANGE 13
HOLMES COUNTY
OHIO

JULY 1978

SURVEY FOR
MERLE SWARTZENTRUBER

8.72 AC.



MAP OFFICE COPY

I CERTIFY THIS SURVEY TO BE CORRECT
TO THE BEST OF MY KNOWLEDGE.

Clyde E. Purdy
CLYDE E. PURDY P.S. #4900