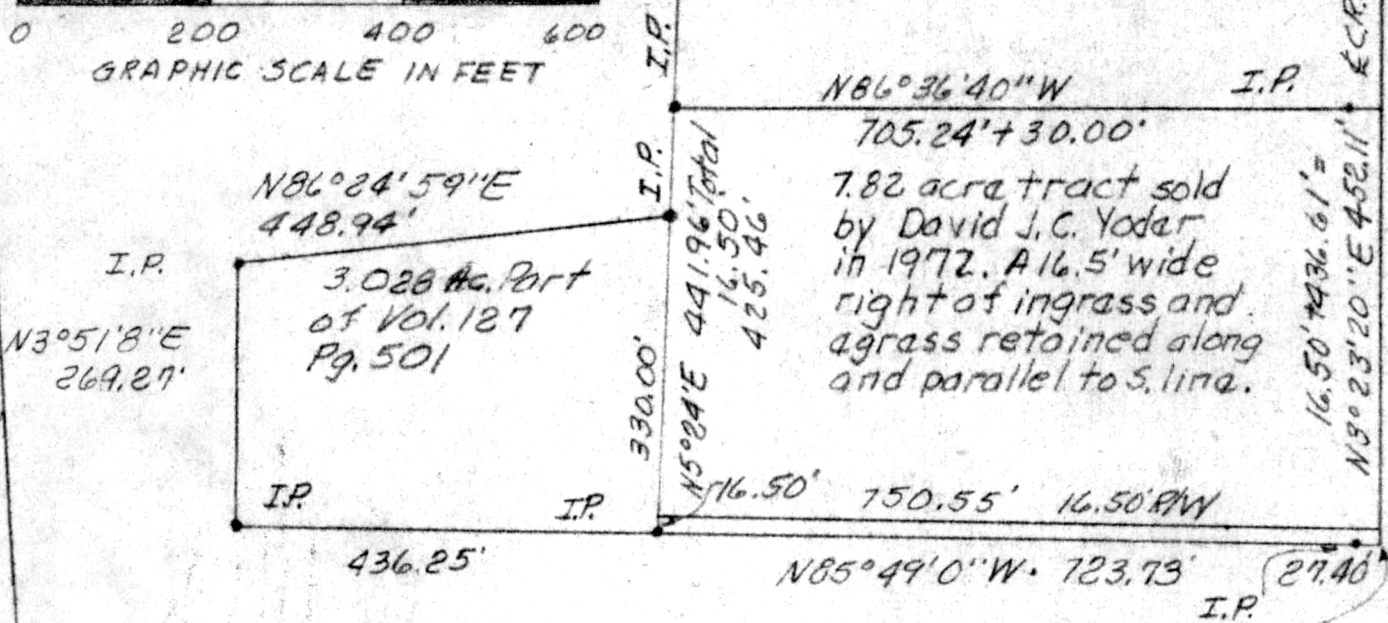
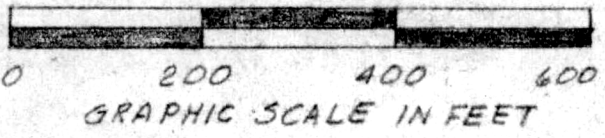


Call T. Cindley



E. line N.W. 1/4 527, T14N, R13W

N86°36'40\"/>

705.24' + 30.00'

7.82 acre tract sold by David J.C. Yoder in 1972. A 16.5' wide right of ingress and egress retained along and parallel to S. line.

N86°24'59\"/>

3.028 Ac. Part of Vol. 127 Pg. 501

N3°51'8\"/>

S.E. crnr N.W. 1/4 527, T14N, R13W

Known as part of the N.W. 1/4 527, T14N, R13W of Prairie Twp., Hol. Co., Ohio.

Beginning at the S.E. crnr N.W. 1/4; thence N85°49'0\"/>

- thence N85°49'0\"/>
- thence N3°51'8\"/>
- thence N86°24'59\"/>
- thence S5°24'0\"/>

and containing 3.028 acres.

Access shall be via the following described stripe of land; beginning at the S.E. crnr N.W. 1/4; thence N85°49'0\"/>

PLAT OF A SURVEY FOR DAVID J.C. YODER (Grantor)

Part of N.W. 1/4 527, T14N, R13W Prairie Twp., Hol. Co., Ohio Robert L. Kasner, P.S. 5193

APPROVED BY

THE HOLMES COUNTY HEALTH DEPARTMENT BY [Signature]

DATE 9-28-79



MAP OFFICE COPY

Rec'd. for record September 28 1979 at 4:21 o'clock P.M. 115635  
Recorded Sept. 29 1979 in Plat Vol. 8 Pg. 301  
Holmes County, Ohio Richard Shaw Recorder, Fees \$ 2.00  
Deed Vol. 203 Pg. 453

8/7/78