

115062

REC'D July 28, 1978

AT 3:53 O'CLOCK P.M.

RECORDED July 31, 1978

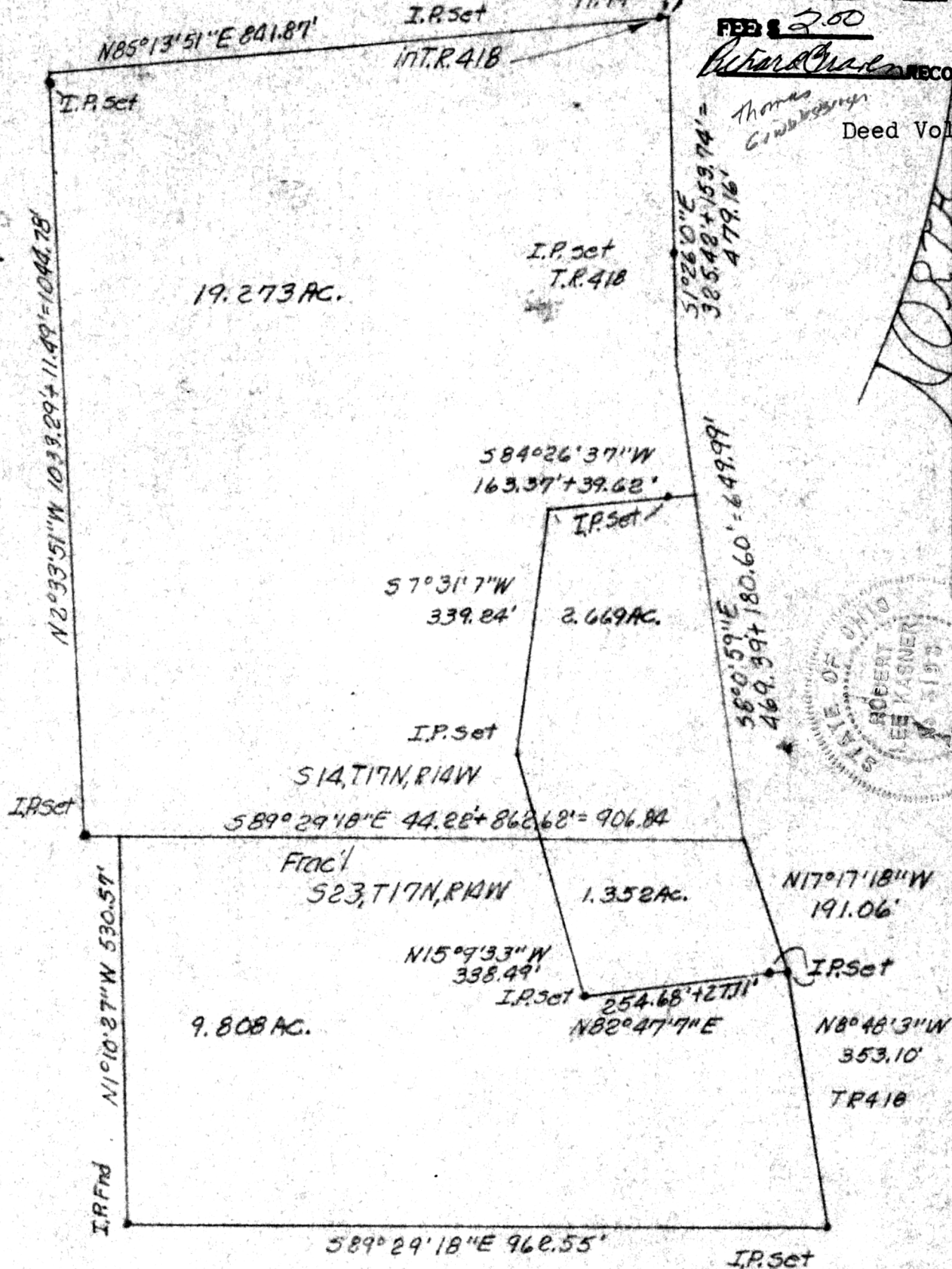
HOLMES CO. Plat VOL. 8 PG. 263

FEE \$ 2.00

Richard A. Graven

Deed Vol. 202-Pg. 785

Referred to in Vol. 129 Pg. 229 as being
N1°00"E 17.58 ch. (1160.28') and S86°00"W
5.49 ch. (362.34') from S.E. cor of
S14, T17N, R14W



MAP OFFICE COPY

N2°33'51"W 1033.29 + 11.99' = 1044.78

N1°10'27"W 530.57'

N85°13'51"E 841.87'

I.P. set
INTR. 418

I.P. set
T.R. 418

51°26'0"E
385.48 + 153.74' =
479.16'

584°26'37"W
163.37' + 39.62'

57°31'7"W
339.24'

I.P. set

S14, T17N, R14W
589°29'18"E 44.22' + 862.62' = 906.84

Frac'l
S23, T17N, R14W
1.352 AC.

N15°09'33"W
338.49'

I.P. set

9.808 AC.

254.68' + 271.11'
N82°47'7"E

N17°17'18"W
191.06'

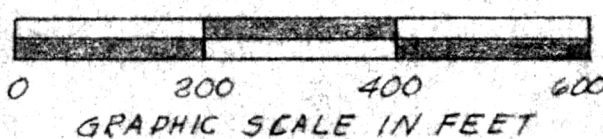
N8°48'3"W
353.10'

TR 418

589°29'18"E 962.55'

I.P. set

Vol. 193 Pg. 1



Robert L. Kasner P.S. 5193

PLAT OF A SURVEY FOR
RICHARD A. GRAVEN
(Grantor)
Part of Frac'l S23, T17N, R14W
Mon. & part of S14, T17N, R14W
Rip Twp., Hol. Co., Ohio.

7/14/78