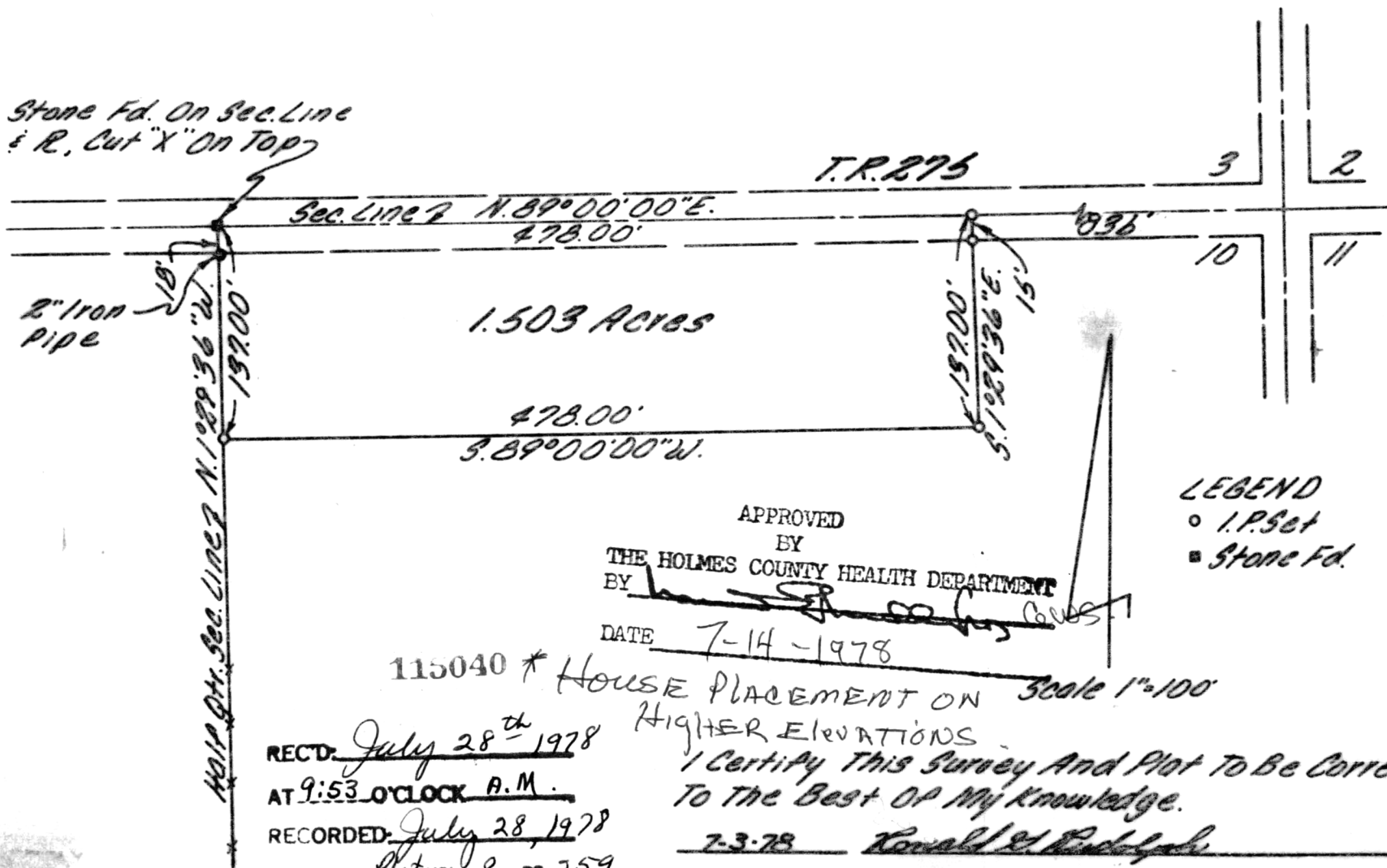


Survey 1.503 Acre Parcel  
 WASHINGTON TOWNSHIP  
 N.E. Qtr. Sec. 10  
 Twp. 19 Rng. 15  
 HOLMES COUNTY, OHIO

Stone Fd. On Sec. Line  
 & R. Cut "X" On Top



APPROVED  
 BY  
 THE HOLMES COUNTY HEALTH DEPARTMENT

DATE 7-14-1978

LEGEND  
 ○ I.P. Set  
 ■ Stone Fd.

115040 \* HOUSE PLACEMENT ON Scale 1"=100'

RECTD: July 28<sup>th</sup> 1978  
 AT 9:53 O'CLOCK A.M.  
 RECORDED: July 28, 1978  
 HOLMES CO. Plat VOL 8 PG 259  
 FEE: \$ 2.<sup>00</sup>

Richard Haven RECORDER

HIGHER ELEVATIONS  
 I Certify This Survey And Plot To Be Correct  
 To The Best Of My Knowledge.

7-3-78 Ronald G. Rudolph

RONALD G. RUDOLPH R.S. 6449  
 R.G. Rudolph Surveying Inc.  
 1176 Summerset Dr.

MAP OFFICE COPY

Breitenbuecher