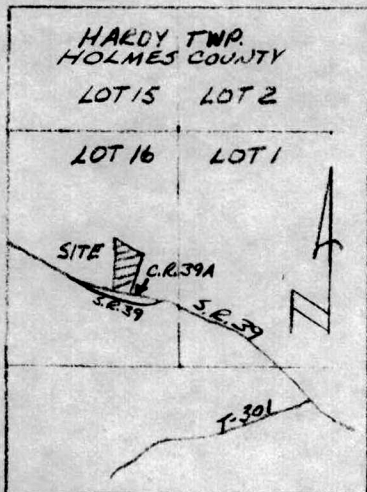


# Buckeye Land Surveying, Inc.

George W. Johnson 215 South Fifth Street, R. • Coshocton, Ohio 43812 (614) 622-4210  
Professional Land Surveyor "Service is more than a promise"



LOCATION MAP  
NO SCALE

JERRY B. & BEATRICE J.  
STROUSE  
D.B. 156 PG. 331

ROBERT B. & NORMA J. HALL  
D.B. 143 PG. 276

GLENN FOLA SCHWORM  
D.B. 143 PG. 475

2.262 ACRES ±

114301

RECT'D: May 26, 1978  
AT 9:36 O'CLOCK A.M.  
RECORDED: May 26, 1978  
HOLMES CO. Plot VOL. 8 PG. 203  
FEE: \$ 2.<sup>00</sup>

Richard Beaman RECORDER

Deed Vol. 202-Pg. 101

APPROVED

BY

THE HOLMES COUNTY HEALTH DEPARTMENT  
BY [Signature] G.W.S.

DATE 5-26-1978

MAP OFFICE COPY

## LEGEND

- IRON PIN FOUND
- IRON PIN SET
- △ POINT IN CENTERLINE ROAD

SCALE: 1" = 100'

DATE: MAY 1978

I HEREBY CERTIFY THAT THIS PLAT IS A  
TRUE DELINEATION OF A SURVEY BY  
GEORGE W. JOHNSON, P.S. 5252

George W. Johnson

ROBERT B. & NORMA J. HALL  
TO  
JIM HALL

BEING A PART OF LOT 16 IN THE SECOND  
QUARTER OF TOWNSHIP 9N, RANGE 7W,  
UNITED STATES MILITARY LANDS  
HARDY TOWNSHIP  
HOLMES COUNTY, OHIO