

Location Map  
"No Scale"

Stone F'd. at the  
N.E. corner of  
the N.W. Quarter  
of Section 14 of  
T-8N., R-7W.

113834

REC'D: April 17, 1978

AT 3:42 O'CLOCK P.M.

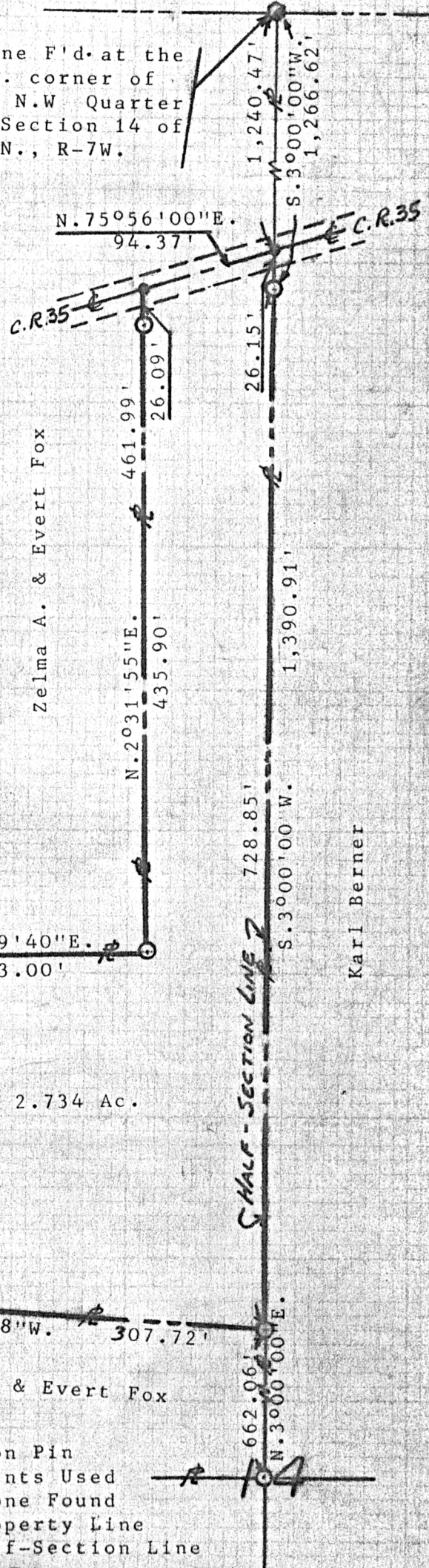
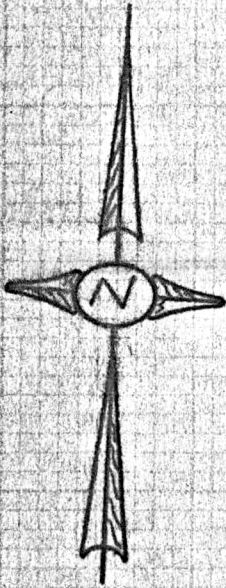
RECORDED: April 18, 1978

HOLMES CO. Plat VOL. 8, PG. 174

FEES: \$ 2.00

Richard G. Yarn RECORDER

Deed Vol. 201-Pg. 548



Zelma A. & Evert Fox

Zelma A. & Evert Fox

Karl Berner

2.734 Ac.

APPROVED BY  
THE HOLMES COUNTY RECORDS DEPARTMENT  
BY [Signature]

DATE 3-17-78

House Placement Critical  
should be toward top of base lot

Zelma A. & Evert Fox  
to

Allen Fox

Being part of Section 14  
in the First Quarter of  
Township 8N., Range 7W.,  
United States Military Lands  
Killbuck Township  
Holmes County, Ohio  
Scale: 1"=100' January, 1978

Zelma A. & Evert Fox

- ⊙ Iron Pin
- Points Used
- ⊗ Stone Found
- Property Line
- - - Half-Section Line

MAP OFFICE COPY

Buckeye Land Surveying, Inc.

George W. Johnson 215 South Fifth Street, R. \* Coshocton, Ohio 43812 (614) 622-4210  
Professional Land Surveyor "Service is more than a promise"

I HEREBY CERTIFY THAT THIS PLAT IS A  
TRUE DELINEATION OF A SURVEY BY  
GEORGE W. JOHNSON R.S. #5252

[Signature]

[Signature]