

113130

REC'D: January 5, 1978

AT 4:20 CLOCK P.M.

RECORDED: January 6, 1978

HOLMES CO. Plat VOL. 8 PG. 133

FEE: \$ 2.00

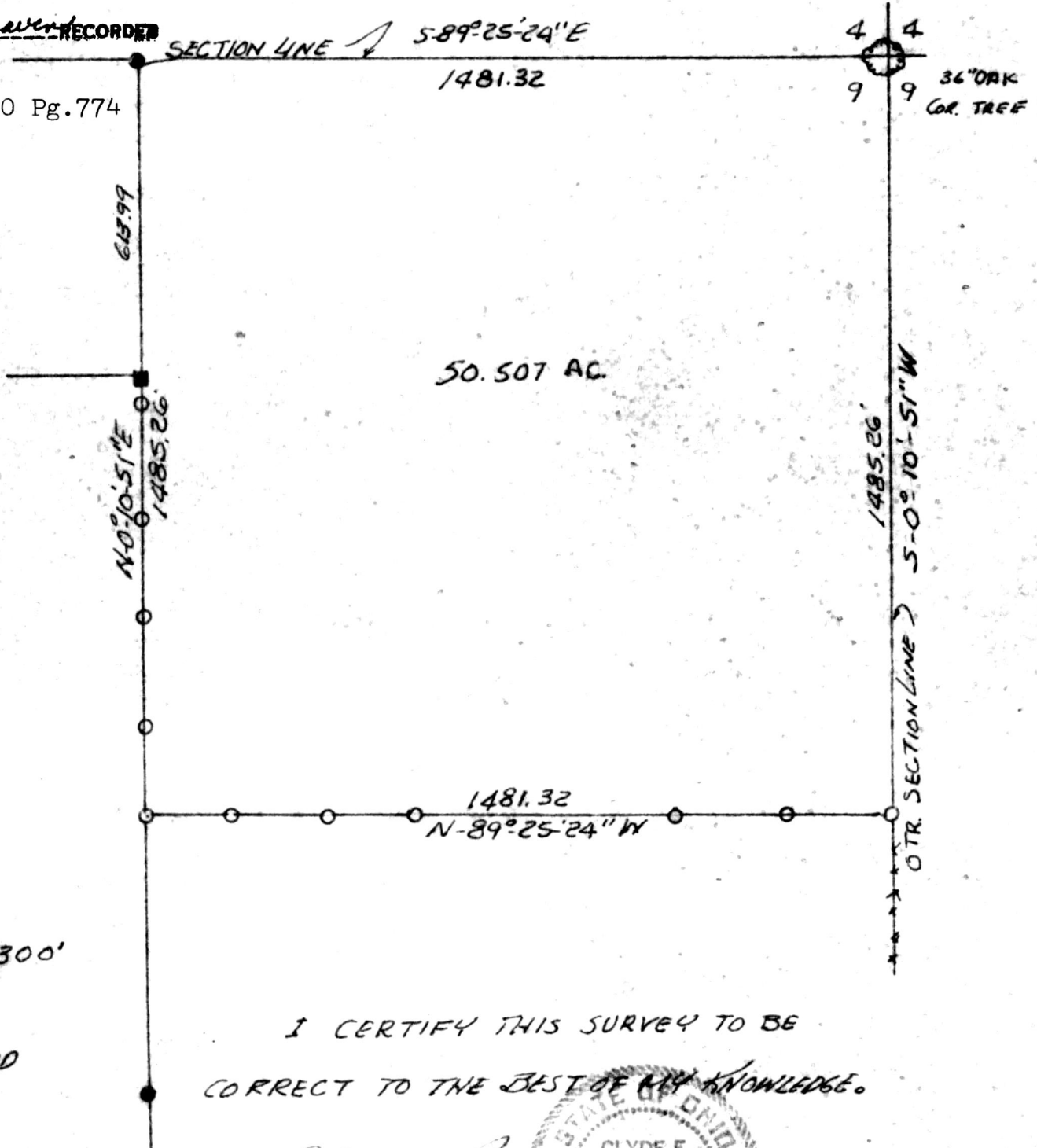
Richard Weaver RECORDER

PRAIRIE
N.W. QTR.
TWP. 13
HOLMES
OHIO

TOWNSHIP
SEC. 9
RANGE 13
COUNTY

DEC. 22 & 23 1977

Deed Vol. 200 Pg. 774

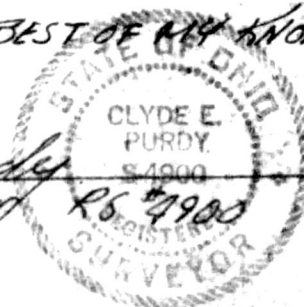


SCALE 1" = 300'

- I. P. SET
- I. P. FOUND
- STONE

I CERTIFY THIS SURVEY TO BE
CORRECT TO THE BEST OF MY KNOWLEDGE.

Clyde Purdy
CLYDE E. PURDY
REGISTERED SURVEYOR



MAP OFFICE COPY