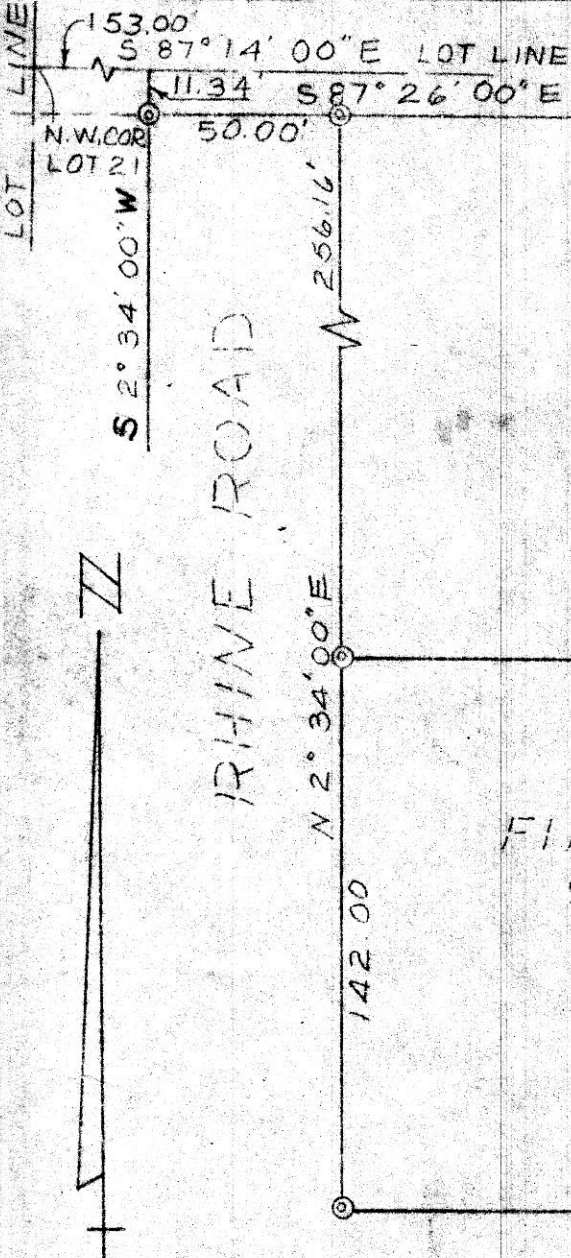


TWP. RD.



RHINE ROAD

LOT 2
FIRST STUTZMAN
SUBDIVISION

0.999 Ac.

112778
 REC'D: November 22, 1977
 AT 3:52 O'CLOCK P.M.
 RECORDED: November 23, 1977
 HOLMES CO. Plat VOL. 8 PG. III
 FEE: \$ 2.⁰⁰
 Richard Heaven RECORDER
 P. Muller
 Deed Vol. 200-Pg. 425
 LEE STEINER

142.00'
 S 0° 15' 16\"/>

© CONCRETE MONUMENT

PLAT OF A TRACT OF LAND
 IN
 LOT 21, FIRST QUARTER
 RANGE 6W, TOWNSHIP 9N
 BERLIN TOWNSHIP
 HOLMES COUNTY,
 OHIO



SCALE 1" = 50'

OCT. 14, 1977

George W. Stewart
 REG SURVEYOR 6357

MAP OFFICE COPY