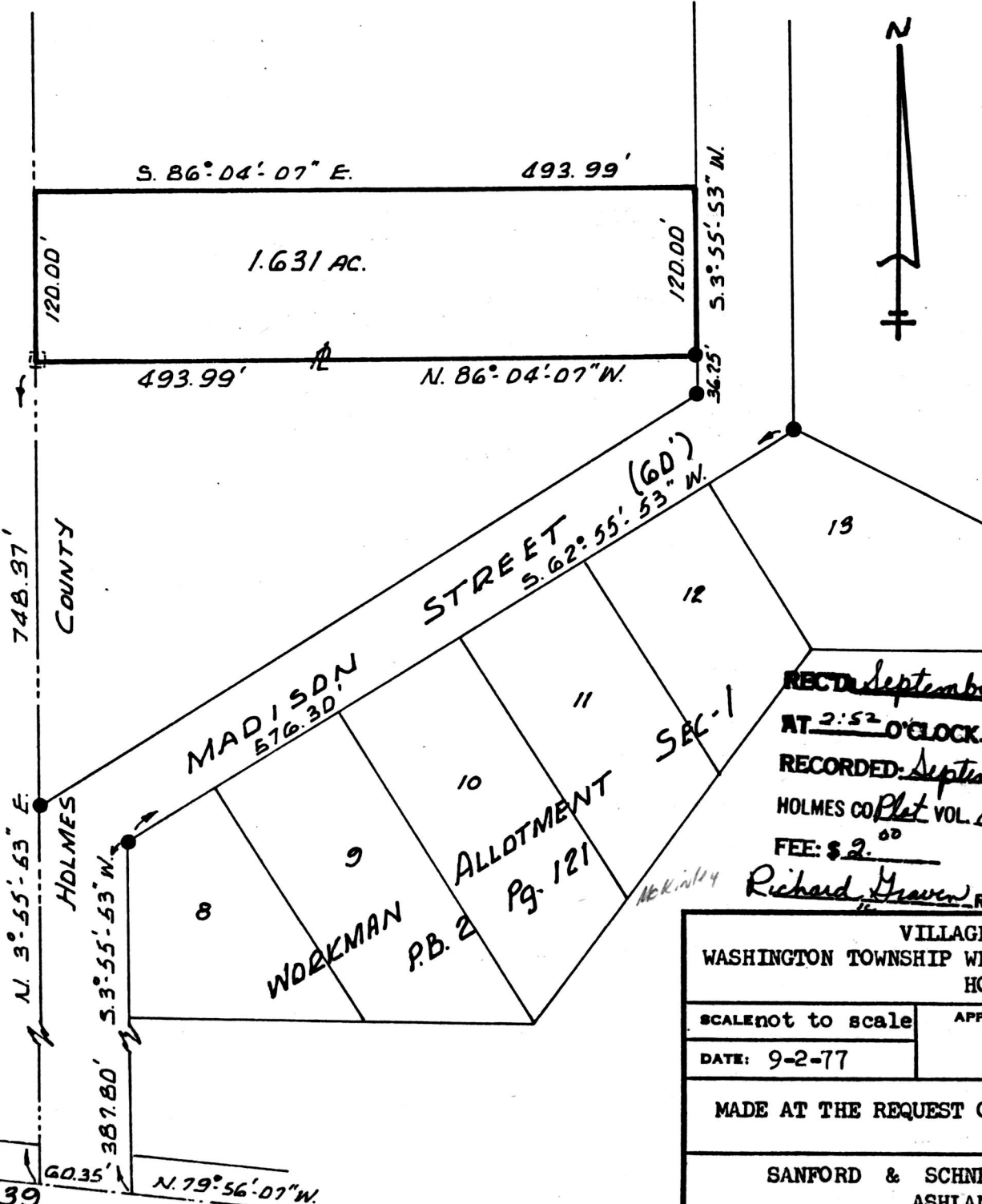


MAP OFFICE COPY

ASHLAND COUNTY
HOLMES COUNTY
748.97'



I hereby certify that this plat represents a true delineation to show the results to split a 1.631 ac tract from lands conveyed to Robert D. & Eleanor Thompson.

Robert A. Sanford P.S. Date *9/2/77*
Robert A. Sanford, PS RS No. 5424



112081

RECT. *September 16, 1977* LEGEND

AT *2:52* O'CLOCK P.M. ● Iron pin found

RECORDED: *September 16, 1977* flat w/tack found

HOLMES CO Plat VOL. 8 PG. 60

FEE: \$ *2.00*

Richard Haven RECORDER Deed Vol. 199-Pg. 606

VILLAGE OF LOUDONVILLE WASHINGTON TOWNSHIP WEST ½ NORTHWEST ¼ SECTION 6 T 19N R 15W HOLMES COUNTY, OHIO		
SCALE: not to scale	APPROVED BY:	DRAWN BY: RAS
DATE: 9-2-77		REVISED:
MADE AT THE REQUEST OF ROBERT D. THOMPSON OWNER		
SANFORD & SCHNEIDER, SURVEYORS ASHLAND, OHIO		DRAWING NUMBER 290