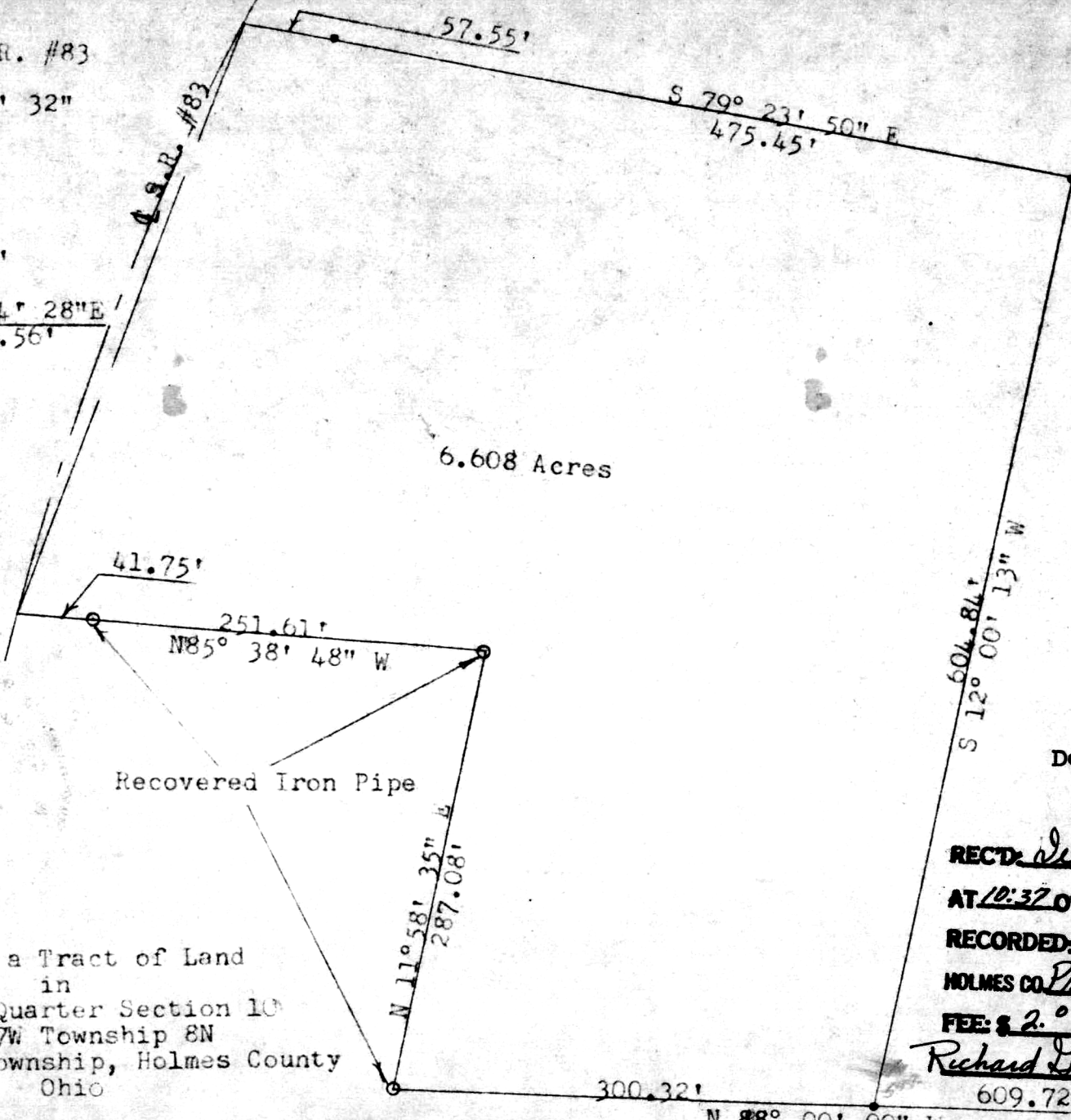


E Curve S.R. #83
 = 12° 00' 32"
 D = 3°
 L = 400.29'
 R = 1909.86'
 C = N 19° 44' 28" E
 399.56'



Plat of a Tract of Land
 in
 Southwest Quarter Section 10
 Range 7W Township 8N
 Mechanic Township, Holmes County
 Ohio

Deed Vol. 196 Pg. 599

109606

RECT. December 17, 1976 Set Steel Pin

AT 10:37 O'CLOCK a.m.

RECORDED December 17, 1976

HOLMES CO. Plat Vol. 7, Pg. 748

FEE: \$ 2.00

Richard Hoover RECORDER

Scale; 1" = 100'

Jan. 28, 1976

D. A. Stewart

Reg. Surveyor #414

MAP OFFICE COPY

S.E. Cor.
 of
 N.E. Qr.
 of
 S.E. Qr.
 Sec. 10

Section Line