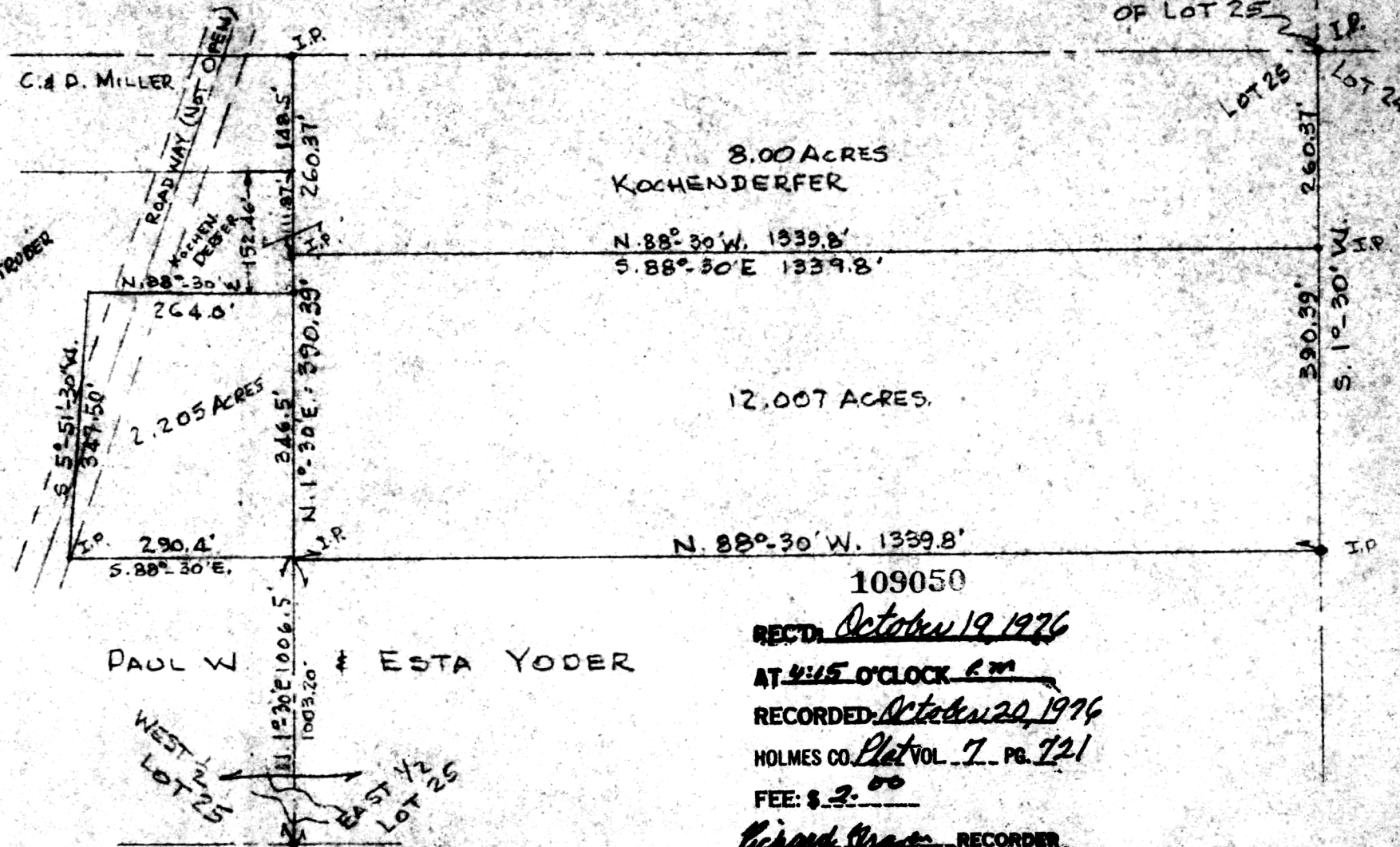


N.E. CORNER OF LOT 25



8.00 ACRES
KOCHENDERFER

N. 88° 30' W. 1339.8'
S. 88° 30' E. 1339.8'

12.007 ACRES.

N. 88° 30' W. 1339.8'

109050

REC'D. October 19 1976

AT 4:15 O'CLOCK P.M.

RECORDED October 20 1976

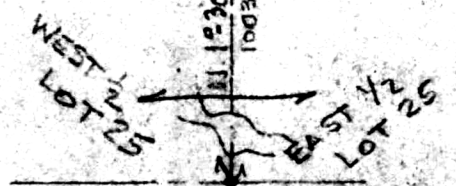
HOLMES CO. Plot VOL 7 PG 721

FEE: \$ 2.00

Richard Cras RECORDER

Deed Vol. 196 - Pg. 161

PAUL W & ESTA YODER



S.W. CORNER OF EAST HALF OF LOT 25

PLAT OF A SURVEY OF A PART OF LOT 25, TOWNSHIP 10, RANGE 4, THIRD QUARTER, PAINT TOWNSHIP, HOLMES COUNTY, OHIO TO CONVEY PARCELS FROM MOSER TO GROSSNIK LAUS

SCALE - 1" = 200'

SEPT. 13, 1976

H. HUNSINGER, #3685, REGISTERED SURVEYOR.



AP OFFICE COPY